

Onerahi Orbit

Free to you from the Onerahi Community Association

Winter - June 2026

Covering Onerahi, Parua Bay, Pataua and Whangārei Heads

Onerahi turns out for ANZAC Day

Over 100 people turned out to the Onerahi ANZAC day service on Saturday 25 April. A range of veterans, serving armed forces members, Fire Service personnel, community members, school and kindergarten age children filled the Onerahi community hall to capacity.

The service was opened by local kaumatua Fred Tito, reflecting the reverence of the occasion. A moving address by Wendy Giffin reflected on the sixteen Onerahi fallen who are identified by plaques at Oak Grove and Onerahi Primary School.

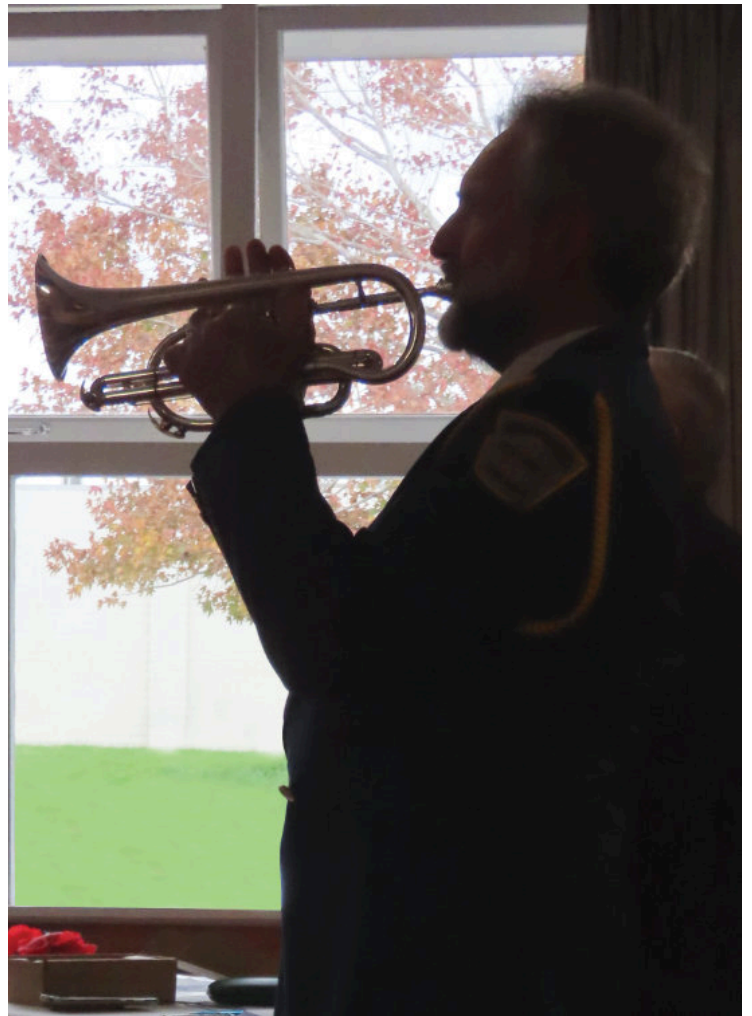
Wendy had researched all sixteen fallen and it was a poignant tribute as she described the different circumstances of each man who did not return.

Zac Fendall from Whangārei Boys' High School read the sixteen names of the fallen while wreaths were laid by the Whangārei District Council, Onerahi Community Association, Whangārei RSA, Onerahi Volunteer Fire Brigade, Onerahi Primary School, Raurimu Avenue Primary School, Onerahi Kindergarten and a representative of the New Zealand Army.

Individual primary school students and community members laid poppies among the wreaths as they remembered. These wreaths were then taken to the plaques at Oak Grove and placed by Councillor Nick Connop and Wendy Giffin.

The 'Last Post' and 'Reveille' was played by Whangārei Districts Brass Band bugler Rodney White. The 'Ode of Remembrance' was read by Wendy Giffin and Gene Tautari. The service ended with a strong rendition from the assembled audience of the national anthems of New Zealand and Australia.

Continued on page 7



Onerahi Matariki Celebrations Pg 5 • ANZAC Day memories Pg 7
• ECHO win in court Pg 8

FROM FIRST HOMES TO
FOREVER HOMES,
I'VE GOT YOU

Covered

Roxanne Simpkin

022 620 3421 | roxanne.simpkin@harcourts.co.nz

Optimize Realty Ltd Licensed Agent REAA 2008

Harcourts
Whangarei



Haere mai,

Mānawatia a Matariki. This means to honour, acknowledge, and welcome Matariki. Have a lovely holiday everyone - enjoy your families and remember those who have passed.

A quick reminder that your voice is always welcome in the Onerahi Orbit. Letters to the Editor will be published - either in full or abridged (as space allows). Our diversity, and acceptance of it, is our strength.

Nga mihi from the Orbit team

Letter to the Editor

Never trust predictive text

On page 20 of the April edition under the heading 'Bream Head News' there's mention of the bird species GFP which is translated as 'Grey Faced Petrol'!! Made my day.

Regards

Fred Muller



Contents

Onerahi turns out for ANZAC Day	1, 2, 6, 7
Letter to the editor	2
President's report.....	3
Bowel screening is easy.....	3
Community Champion Awards	4
A local colouring-in book!.....	4
Arts, Culture and Heritage Grant	5
Puanga Matariki festival	5
Justice of the Peace times	6
Snap to it! Tiakina Whangārei trapping competition.....	6
ANZAC Day commemorations continued	7
Onerahi ECHO win in court	8
Whangārei Scottish Country Dance Club	8
Changes at the Allens Group.....	9
Onerahi Volunteer Fire Brigade.....	10
Rapid Response vehicle donors acknowledged	11
Tamaterau tennis court	11
CAB community notice.....	11
Golf for good.....	12
Food theft - keep your eyes peeled.....	12
District Council message.....	13
WDC Councillor Baker	13
Keep New Zealand Beautiful.....	14
Good neighbours, safer communities	14
News from Parua Bay PBRRA	15
Regional Councillor Amy Macdonald	16
Boaties urged to provide contact details	16
Onerahi school report	17
Local junior tennis player scores.....	18
The do's and don'ts of AI made simple.....	18
Bream Head planting day	19
Daffodil Day	19
Real local solutions	20
No more lobster	20
Foster parents needed! SPCA	21
A taste to remember - North Haven Hospice	21
Celebrate national volunteer week.....	21
Faith for today: Under control	22
Emergency numbers	22
Venues for hire.....	22
Regular events	23
Upcoming events	24



- Cultivate and nurture the interests of the community of Onerahi
- Promote the district
- Assist residents
- Develop and administer facilities

President's report

The OCA reflects on its past year at the AGM on 21 June 2026.

The AGM will be held at the Onerahi Community Hall at 3pm on Sunday 21 June 2026. At this meeting we will determine the committee composition and plans going forward. We will also be presenting the Onerahi Order of Merit Award for 2026. We will be farewelling Rose Tantau at the AGM as she moves on from Treasurer where she has been for the past 17 years. Rose has been responsible for the financial health of OCA as well as a tireless worker from the Onerahi Community House.



Membership application forms are available from the website. Membership is confirmed by committee approval. Regular facility usage (including the Onerahi Hall and Onerahi House) continues with 75 regular bookings per month with casual hire about five bookings per month. There have been increased enquiries about casual hire bookings for the rest of the year. Feedback forms, venue booking forms, grant application forms, nomination forms etc. and Onerahi

Feedback forms, application forms and nomination forms are all available from the website www.onerahicommunity.co.nz
Through our website we will try to provide information about what is being done and share good stories about our community

information and local good news stories are all available from the website www.onerahicommunity.co.nz. It also contains a schedule of local activities.

- **Community Champion Awards.** If you know someone in the community who deserves to be recognised as a monthly champion, please get in touch. The latest recipients are on page 4.
- **Recent and upcoming events and activities.** The ANZAC day commemoration service was held on 25 April at the Onerahi Community Hall (see page 7) and Te Puangarua Matariki Celebration dawn service is planned for 9 July at St Stephens Church 6.00am.
- **Community Led Projects.** Working with the WDC, there will be some more work done in the Onerahi shopping area on seating and tidying the paved area.

Feedback regarding the Community Hall and House car parking. It is noted that a number of users of the Community Hall car park choose to park on the broken yellow lines around the hall perimeter and/or up the Hall ramp. The committee are aware that, under their risk assessment process, this may limit the effectiveness of an emergency response at the Hall. Hall and House car park users are encouraged to use the available car parking spaces.

Grant Harrison
President

Bowel screening is easy from open to close

Returning your completed bowel screening test kit is as simple as dropping it into a NZ Post box or Awanui Labs collection centre.

Free bowel screening is available for people aged 58 to 74, who will be posted an invitation letter and test kit. The test itself can be done at home; is quick, simple and potentially life-saving. Each kit includes a pre-paid return envelope for NZ Post boxes.

Alternatively, completed kits can be placed in the green bowel screening boxes at Awanui Labs collection centres. In Onerahi, this can be found at Onerahi Family Healthcare, 116

Onerahi Road. Elsewhere in Whangārei, they are at 11 Rust Ave, 8 Kensington Ave, and 1a Clark Rd in Kamo.

Bowel cancer is the second-highest cause of cancer death in New Zealand. It often has no symptoms, but the screening test can detect bowel cancer early, when it can often be successfully treated.

Anyone who has misplaced their bowel screening test kit, or it has expired, can phone 0800 924 432 on weekdays 8am to 6pm to request a new one.

For more information, email info@bowelscreening.health.nz or visit timetobowelscreen.nz

Published in April, June, August, October, and December.

The Onerahi Orbit is a not-for-profit publication owned by the Onerahi Community Association, that reports the good news in Onerahi, Parua Bay, and Pataua. 4,000 copies are printed by JOP and distributed by volunteers throughout this area; readership is approximately 12,500. Opinions expressed in signed articles, or in advertisements appearing in the Onerahi Orbit are those of the author and advertiser and do not reflect those of this newsletter nor its publisher. No part of this publication may be reproduced without the prior written permission of the editor, writers, and owners of Onerahi Orbit.

Follow us on Facebook
www.facebook.com/onerahiorbit



Editor: Margie Kent
Email: onerahiorbitmagazine@gmail.com

Stories of approximately 200 words or less are due for the next Orbit by 3 July 2026 - share your news by emailing Margie at onerahiorbitmagazine@gmail.com

Advertising: Megan Lavin-McIsaac 022 641 9786
Email: onerahiorbit@megatype-publishing.co.nz

Design: Megan Lavin-McIsaac 022 641 9786
Email: onerahiorbit@megatype-publishing.co.nz

Accounts: Rose Tantau 438 5499
Email: ccoca@extra.co.nz

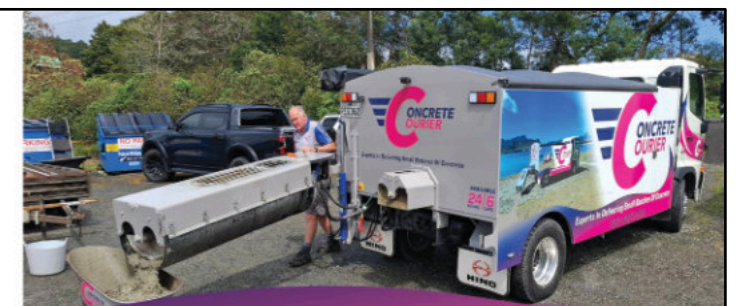
Deliveries: Allan Westlake 021 437 591



No mess, no stress just concrete!

Experts in Delivering Small Batches of Concrete

☎ 022 422 3068
 📧 concretecouriernz@gmail.com
 🌐 www.concretecourier.co.nz



For example:
 house & deck piles, fence & retaining wall posts, garden shed & spa pool slabs, patio floors, paths & small foundations etc

Community Champion Awards

If you know someone in the community who deserves to be recognised as the monthly champion, please get in touch via our website.

March Award - Robert Coats:

For his work on the preservation of the Onerahi Foreshore and his leadership as a volunteer delivering the Onerahi Orbit magazine - to both commercial and residential addresses in Onerahi. He was also previously a member of the OCA Committee.



April Award - Maree and John Nicole:

Once a week, Maree and John Nicole spend nearly an hour collecting the rubbish that has been discarded along the roadside in Onerahi. They have been doing this for the past 5 years since they moved into North Crest Drive from Pataua South.



A local colouring-in book!

Murray Ross is a local man who, since he retired from a career in sign writing, has now created a wonderful children's colouring-in book.

The book features two Australian characters - a Koala called Coco and a bush turkey called Scratch - who venture over to New Zealand and meet Kenny the Kiwi and Penny the pukeko.

The four go off on adventures and get up to all sorts of mischief. Murray has captured local scenery with these four characters exploring out and about. Children will be able to identify local places like the Onerahi jetty, Mt Manaia, the harbour and the local countryside.

Contributed by Wendy Giffin



Arts Culture and Heritage Grant

In previous Orbits, we have covered grants available through the Onerahi Community Association (OCA). This edition, we are showcasing our Arts, Culture and Heritage Grant.

This is a contestable grant, meaning that more than one applicant may receive part of the total of the \$750 we have available each year. This grant has been allocated to support and celebrate the history, language, culture, and art of our diverse community.

This year we would like to offer part of this grant to a person who can come up with a colourful design for the very low bench seat in the Onerahi shopping centre, to signify this is a special bench for children. The winning designer will need to follow through with painting the bench seat (using acrylic paint). We prefer the leading colour is blue, as we are hoping the handrails and barriers at the shopping centre will soon be painted that colour.

We realise it is a very low seat and not suitable for everyone, especially our disability sector, but there are a number of other benches that do suit people who prefer a handrail. As the disability sector have asked about this in the past, we want to

make it clear, by painting it in a child attractive way, this is a special seat intended for children. The grant will cover the cost of materials and a \$50 gift voucher in recognition of the time spent on the project. We would love to hear from some of you arty and creative young people, but any age is welcome to submit a design.

The OCA committee will judge the design and select the winner.

Please note - as this is a bench seat, and liable to normal wear and tear, we need to put a maximum of 3 years life on the painting of the seat. It will be impractical to keep the same painting on it forever.

If you have any other ideas that could fit the intent of this grant, feel free to go onto the OCA website and locate the grants application form and submit it to OCA.

Google 'onerahi community association' and click on the facebook information that comes up and open this up and our website details are right there. If you click on the link, it takes you directly into our website. We are still working on making it more searchable on Google.

Contributed by Dee Williams, Secretary OCA

Puanga Matariki Festival

Ko Puanga te whetū i ārahi i ā Matariki ki te Tau Hou

(Puanga is the star that guides Matariki to the New Year)

Puanga and Matariki is a time to encourage whanaungatanga, share stories and kai. It also marks the beginning of the Māori New Year, which traditionally was the time to plant trees, prepare the lands for planting crops and, more importantly, renew links with whānau and friends.

Onerahi will be celebrating (as has become the custom) with a July 9 Matariki celebration dawn service at St Stephens Church at 6.00am - all are welcome to the ceremony and the gathering/sharing of food which follows.

The Puanga Matariki Festival is a special celebration with a series of cultural events happening within the Whangārei district for people to come and celebrate together.

The best way to find out what's on offer is to visit the Facebook page <https://www.facebook.com/MatarikiFestivalWhangārei>



Morris & Morris Funerals



Northland's Most Experienced Team

Proudly Caring For Generations of Northland Families

Talk to the experts, we understand funerals. 24 hours ~ 7 days a week

09 437 5799 Whangarei - 09 432 0380 Waipu
09 439 8048 Dargaville & Kaipara

www.morrisandmorris.co.nz





PUANGA MATARIKI Festival

Whangārei Takiwā
Arohātia! 15 June to 17 July



PIPIRI 2026 • wdc.govt.nz/Matariki



Justice of the Peace – Whangārei Urban Service Desks

MON	Tikipunga Library	10:15am to 12:00pm	FRI	Civic Centre Te Iwitahi	9:30am to 12:30pm
TUES	Civic Centre Te Iwitahi	9:30am to 12:30pm		Tikipunga Library	2:00pm to 4:00pm
WED	Whangārei Central Library	9:30am to 12:00pm	SAT	Whangārei Central Library	9:30am to 12:00pm
THURS	Whangārei Central Library	9:30am to 12:00pm	SUN	NONE ON SITE. Look in White Pages under 'Justices of the Peace' or on JP or library website.	
	Onerahi Library	2:00pm to 4:00pm			

Snap to it!
Trapping competition
21 April - 22 June
Trap rats and be in to WIN!

FREE RAT TRAP with each registration (open to urban Whangārei residents only, while stocks last)
Every rat trapped puts you in the draw to win a \$50 Prezzy Card

Prizes for:
 * Most rats trapped
 * Biggest rat
 * Longest tail
 * Gnarliest rat

Snap to it!
Tiakina Whangārei is a community-led initiative that aims to protect and enhance the city's native biodiversity through backyard trapping.

The 'Snap to it!' competition is currently open for registrations via their website, which will close on 22 June. When you register to participate, urban Whangārei residents will receive a free rat trap kit (while stocks last) and you may win a \$50 prezzy card. Check out their advert below and scan the QR code or visit: tiakinatetaikerau.nz/register-your-interest

Tiakina Whangārei provides information on how to trap simply and effectively. See their website to learn more.

Let's help nature thrive, Onerahi

Tiakina Whangārei brings communities together to tackle pest plants and animals, protect native species, and create thriving backyards and neighbourhoods. Get in touch to find out how you can be part of the change.

For more information or pest control advice:
 W: tiakinatetaikerau.nz
 E: tiakinawhangarei@nrc.govt.nz

ANZAC Day commemorations

Continued from page 1

The Onerahi Community Association hosted the ANZAC Day gathering. This was the second ANZAC service hosted by the association at Onerahi Hall, and the larger number of attendees this year was proof of the community support of the event.

"We were really pleased with the turnout and the way things ran", commented Grant Harrison, OCA president, "I think we kept to the mood and reverence of the occasion and it was good to have a service a bit closer to home for the local community members who sometimes struggle to get to the other services. It was nice to have the tamariki there contributing wreaths they had made themselves; and having service organisations, serving soldiers, and community members mixing with the veterans was a strong memory for me."

The morning finished with a shared cuppa and chat time. Rose Tantau, OCA Treasurer, met CPL Jared Smith, RNZAF Armourer, who is based at Whenuapai. Jared and his father agreed to have a photo taken by Rose for the Orbit. Jared has been in the Airforce for 11 years. His Great Grandfather was Leo Barclay Smith.

Leo served in WWI at Gallipoli where he was wounded. Once he had recovered, he was sent to the Western Front, where



Zac Fendall from Whangārei Boys' High School reading the names of the fallen



CPL Jared Smith, RNZAF, with his father Pete Smith



Cr Connop with the wreaths at Oak Grove Memorial

he was again wounded and then sent home. Leo served as home defence in WW1 at Waipapa Kauri. Jared's parents, Mr and Mrs Pete Smith, also attended the service with Jared and live locally near Onerahi.



Wendy Giffin with two of her children and grandchildren

Lest we Forget.
Photos by Rose Tantau and Wendy Giffin

Parua Bay School
Navigating Learning Together

YEAR 7/8

We offer an extensive range of opportunities to our intermediate students

- Whanau Captains
- Sports Captains
- Music Rock Band
- Epro8 Club
- Coding Club
- Debating
- Camps
- Leadership Programme

- Senior Ball
- Scuba
- Hiking
- Kayaking
- Snorkeling
- Sailing
- Surfing
- AIMS Games

To find out more about our intermediate programme contact: kate.fortune@paruabay.school.nz
 (09) 436 5814 www.paruabay.school.nz

Onerahi group ECHO win in court

Whangārei Airport is strengthening its noise-control regime after Onerahi community group ECHO (environment, community, health Onerahi) won an Environment Court case over how airport noise rules were being applied by the Whangārei District Council at the Onerahi Airport.

Environment Court judge Jeff Smith confirmed that the airport is the appropriate base for rescue helicopter operations for at least the next 10 years, but he also found that the council lacked precision in noise measurement and in assessing the impact of expanding their exemptions



beyond emergency take-offs/landings. The court found changes made in 2016 expanding helicopter noise exemptions were not 'minor', and the council had for some time incorrectly factored in only take-offs and landings.

The outcome is that independent noise monitoring would be funded by council to confirm the accuracy of their noise modelling, which had to be completed by 12 May 2026. Non-emergency activities were to be included in noise compliance monitoring, including maintenance work, training flights, promotional activities and other support operations.

Commercial aircraft noise monitoring was expanded to include taxiing, startup, and shutdown noise—meaning noise from aircraft such as Q300s near the terminal/apron will now be captured for the first time. The inner airport noise boundary (higher permitted noise area) was expanded to cover where taxiing/startup/shutdown occurs and to the rescue service's new base.

Based on a 1news.co.nz report by Susan Botting dated 12 March 2026

Whangārei Scottish Country Dance Club

Have you ever driven past the Onerahi Community Hall on a Thursday evening, heard music, seen people dancing and wondered - what is going on?

The Whangārei Scottish Country Dance Club has been meeting in the hall for over 30 years, and surely now is the time for you to call in, 'give it a go' and find out why there is so much laughter ringing out.

Scottish Country Dancing is like the social dancing of Scotland, but doesn't involve swords or pipe bands. We dance in groups of 6 or 8, with a different partner for each dance and all ages and levels of experience dance together. No partner is needed, no special outfits, and no, you don't need to have Scottish heritage. We teach you the steps and formations which make up the dances and, with practice, these become second nature.



Fun, friendship and fitness are our key words and the social side is almost as important as the dancing. Local dancers, including Lorna (Whangārei Heads) and Esmee (Waikaraka), like the friendly atmosphere, the help willingly given and the exercise for mind and body.

Join us on a Thursday evening for a new experience. See our advertisement below for full details.

Contributed by Fiona Bullivant for the Whangārei Scottish Country Dance Club

The photos below were taken at the club's ANZAC evening





Scottish Country Dancing

Fitness, fun & friendship

Onerahi Community Hall • Thursdays 7.30pm - 9.00pm

Contact : Fiona 09 437 1817 fionabul@xtra.co.nz

f Whangarei District Scottish Country Dance Clubs

Beginners welcome... please wear soft shoes

Allens Group - Maintenance Made Easy

We are Allens Group - your local one-stop-shop for all things 'maintenance'.

We know that name is a bit ambiguous, so we've simplified things with our two divisions: Allens Painting Solutions and Allens Washing Solutions. Same team, clearer solutions. Between the two, we've got you covered, from all your interior, exterior and roof painting requirements, to your general exterior maintenance including house and building washes, roof washes, gutter cleans, moss and mould treatments, spider sprays and general pressure washing of decks, fences, pathways and driveways.

Quality and longevity are at the forefront of everything we do. We are Master Painters, Dulux Accredited, Porter's Applicator Guild Members (for those fancy features like rust walls, French washes, Limewash etc) and we also hold SiteWise Gold, which is more for the commercial market, but our residential customers can also rest assured that health and safety is a priority. From heritage villas to modern new builds, and everything in between, Allens Group will ensure superior communication and workmanship throughout the project.

We service both residential and commercial customers doing one-off jobs as required (getting a house ready for sale?), but we also have huge uptake on our annual maintenance plans. This is a custom, complimentary service that we offer to all of our customers where we send you a no-obligation, friendly reminder each year (or as regularly as you like) when your maintenance is due. Whether anything is required at that stage or not is up to you, we either do the work or we just pop you back in the calendar for another reminder down the track. We know life gets busy so let us take that one task off your to-do list.

2026 is our tenth year in business servicing Whangārei and the surrounds, and we're celebrating by giving away \$200 credit with us EVERY MONTH for the whole year. Just 'like' us on Facebook and you'll see the promo come through each month. You can enter yourself or someone you know who may need one of our services. Facebook also has a huge array of 'before and after' photos, and our website has more detailed information on all the services we offer, for those doing their homework.

Your home and/or properties are your biggest investments. Maintain them - it will save you money in the long run. Talk to us.





Open from

7.30am to 8.00pm Monday to Friday

8.00am to 8.00pm Saturday to Sunday

Phone 09 436 8008

Onerahi Volunteer Fire Brigade



Meet Ingo Jungo, Station Officer of the Onerahi Volunteer Fire Brigade. Recently, Ingo was awarded the Long Service and Good Conduct Medal, recognising sustained operational service carried out with dedication and integrity. To qualify, volunteers must complete a minimum of 14 years' service, including regular training nights and responding to callouts. We asked Ingo what keeps him coming back...

1) What inspired you to become a volunteer firefighter?

My whole family was involved in the service, so my brother and I basically grew up at the station. The fire brigade in my hometown had a cadet unit where kids could join from the age of 10. I was

accepted on 10 April 1985, one day before I turned 10, which I was quite proud of at the time. We were always welcomed and supported by the operational crews, which made the decision to join them at 16 an easy one. Three weeks after

our arrival in NZ, I walked to the Onerahi Fire Brigade and asked if I could join - that was on the 30th of May 2011. By the way - it's a great way to learn about the country, the people and the culture.

2) Are there any callouts or moments that stand out as especially memorable or meaningful?

Yes, plenty. Some are hard to describe, some aren't for the public, and some turn out very differently from what you expect. For example, what started as an automatic fire alarm just after midnight on Friday the 13th turned into a large, multi-day industrial fire. But one callout still makes me smile.

I had been involved in plenty of animal rescues, but never a "cat up a tree." Then I arrived in New Zealand and my very first callout here was... a cat up a tree (I can confirm it wasn't the last one we've helped down).

3) What does receiving this long service medal mean to you personally?

To be honest, it means a lot. It's not just about recognising years of service or doing a good job. Yes, it reflects personal dedication and consistency, but more importantly, it reflects the team. You don't stay this long without a team, and nothing we do works without one.

4) What keeps you coming back year after year?

First and foremost, being part of a great brigade and doing something that really matters. I also really enjoy seeing younger crew members progress, grow into their roles, and carry things forward.

5) What are you most proud of when you reflect on your time as a volunteer firefighter?

I think I've been able to make a difference in other people's lives, especially through training and helping others prepare for courses. I'm also very proud of my family, who make all of this possible. My wife, Andrea, has always been incredibly supportive. Our eldest, Mattis, joined more than two years ago and is currently preparing for his Qualified Firefighter course. I'm also involved in managing a specialist group for long-duration vegetation fires, Te Ope Tanga Kai Hoe. Being part of this service, the people in it, makes me proud.

6) How do you balance volunteering with work, family, and everyday life?

It can definitely be challenging at times. It wouldn't be possible without my family, including my in-laws, who step in to help.

Rapid Response Vehicle donors acknowledged

On 28 March 2026 there was an unveiling of a commemorative plaque at the Whangārei Heads Fire Station to honour the generous donors for an All Terrain Vehicle for the local fire brigade.

The unveiling was attended by first response personnel, Lions members, members of the community and Whangārei District Council representatives. The rapid response vehicle needed to be an ATV to access rural properties in emergencies; and is now equipped with first response equipment to collaborate with St John's, SARS and other emergency teams.

In March 2020 the Onerahi and Whangārei Heads Lions Clubs approved a donation of \$20,000 to the Whangārei Heads Fire Brigade for an All Terrain Vehicle, and also supported an application for a grant from the Lloyd Morgan

Lions Clubs Charitable Trust for a further \$20,000, which was also approved, providing a total of \$40,000 to purchase the rapid response vehicle.

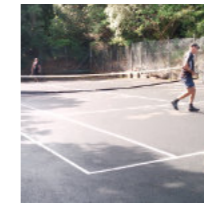
There was a lengthy delay following the purchase, as the Whangārei Heads Fire Brigade needed to complete building extensions in order to keep the vehicle in a locked and secure premises.

This vehicle is of huge benefit to our local area, expediting rapid response in any emergency and enhancing collaboration and coordination with all local emergency teams.

From Frances Mason, Onerahi Lions Club

Tamaterau tennis court

Fancy a game of tennis with a swim afterwards? The Tamaterau tennis court has been upgraded and is ready for community use.



Located behind the hall at Tamaterau, the tennis court has been resurfaced and the surrounding area relevelled. The court is now in good condition for tennis players of all levels.

There is no charge for the use of the court, but please note that there is a donation box at the gate and your contribution is expected. This money goes towards the maintenance of the court and the hall.

From Jane Barr, Tamaterau

CAB community notice

The Community Advice Bureau has implemented two upgrades. These are both valuable resources for the community to be aware of:

The first is a youth tool kete for young people 15 - 24 years - find it on <https://youth.cab.org.nz/>. The kete breaks down the available advice and assistance into topic areas so that people can more easily find what they are looking for.

The CAB have also moved their community directory to a new webpage - <https://Whangarei.cab.org.nz/> where you can search for local Whangārei community services and clubs - these include sections for Interest Groups, Sports Clubs, Facilities For Hire, Counselling and Support, Whanau support and parenting, Health and Wellbeing, Older Persons, Youth and Budgeting.

New Entrant to Year 11

Your children are amazing already. We just help them prove it.

ENGLISH & MATHS
Free assessment
Book now!

Whangarei Ph 438 1144
email whangarei@numberworks.com
numberworksnwords.com/nz

NumberWorks 'nWords | **40 YEARS TUTORING**

ONERAHI FISH SHOP

OPEN 6 DAYS A WEEK
MON to SAT 11.30am - 9pm

09 436 0958

Chinese food
Drinks
Milkshakes
Take-aways

112 Onerahi Road
Onerahi Shopping Centre
(Next to Pepe's)

OH⁺ Onerahi Family Healthcare

TRUSTED CARE CLOSE TO HOME

From everyday health concerns to travel medicine (including Yellow Fever vaccines), earwax removal, and women's health, our experienced team provides trusted care in **Onerahi and Parua Bay**.

8 AM — 5 PM | MON TO FRI

ONERAHI CLINIC
116 Onerahi Road, Onerahi

PARUA BAY CLINIC
Cnr Lamb Rd & Whangārei Heads Rd, Parua Bay

Accepting new patients. **Scan to enrol today.**

Scan to enrol

BOOK AN APPOINTMENT (09) 436 0789

Visit onerahifamilyhealthcare.co.nz to learn more.



'Golf For Good' Tees Up \$10,000 for Local Youth

At the recent Golf For Good event, the fairways of The Pines Golf Club were filled with more than just great golf, they were filled with generosity, laughter and a powerful sense of community.

Local business Boost Brokers teamed up with David Mullan, better known to many as @Boldmangolf on Instagram, to host the inaugural Golf For Good Charity Ambrose Tournament, with all proceeds going to the local charity 'I Have a Dream NZ'. By the end of the day, the event had raised more than \$10,000 to support young people in the region, a result that left organisers and participants equally thrilled.

The atmosphere was electric from the first tee. Teams embraced the Ambrose format with plenty of friendly banter, while on-course competitions kept things lively throughout the round. Golfers had the chance to take a swing at a \$20,000 hole-in-one prize (still waiting to be claimed!) and the day was packed with raffles, auctions and spot prizes

that ensured everyone went home a winner in some way. Taking out the title on the day was the cleverly named team "All ham, no eggs" – Kyril McCarthy, Tiana Wilson and Donny Wilson – who combined brilliantly for an impressive 54.91 nett (59 gross). But while the competition was strong, the true victory belonged to the cause behind it.

Funds raised will help I Have a Dream NZ continue its work walking alongside young people, supporting their education and helping them realise their potential. For Mullan and the team at Boost Brokers, the goal was simple: create a fun, inclusive event that gives back to the community and invests in its future.

Judging by the smiles on the course and the generosity shown off it, Golf For Good lived up to its name, proving that when sport and community come together, everyone wins.

David Mullan
Club Development Officer - North Golf Association

District Council message



Kia ora Onerahi - You may have seen the works underway on Weir Street in recent weeks.

In the last edition of Onerahi Orbit, Councillor Nicholas Connop provided an overview of the Weir Crescent footpath project. At the time of writing this column, the project was on track to be completed on time.

As with any construction in a residential area, there will have been some short term disruption. Thank you to residents and road users for your patience while this work was carried out. This is a practical investment in everyday safety and connectivity, and I look forward to seeing the finished footpath serving the Onerahi community for years to come.

Mayor Ken Couper

WDC Councillor Baker



Sometimes complaining isn't being a negative Nancy, sometimes it's the most positive thing you can do. Here's two good examples.

Firstly, sewerage in Whangārei Heads. Whangārei District Council has unanimously approved funding for measures to improve the system, to be implemented over the coming year; and for a business case for the long term capacity solution.

Implementing the long term solution will be a job for the new Northland Waters entity, which takes over our wastewater assets in 2027.

Reporting on spills and odours can have a number of benefits. It may prompt Northland Regional Council to issue an Abatement Notice, and new rules will ensure the new water entity will be even more driven to respond to breach notices and spill and odour reports. It can also help track the effectiveness of the work going on. If we report now, and keep reporting, we should be able to tell whether the improvements coming in the next year have resulted in fewer reports (and fewer spills and odours); and we keep the focus on the job to be done for the new water entity.

This is a call to arms to report not once but twice – to WDC and to NRC. WDC needs to know because it's their system and it helps staff prioritise and respond to issues on the ground. NRC needs to know because they monitor system breaches.

Another example is wandering cattle. Wandering cattle on the road in Waikaraka has again resulted in property loss for

someone in our community, and there's concern that it will be even more serious next time.

However, there have been fewer reports of wandering cattle this year, perhaps as a result of measures taken to fence and clear the stock. Or maybe people just haven't been reporting as much. Let WDC know if you see wandering cattle and you can help ensure we keep a focus on this issue.

Report to WDC here: <https://www.wdc.govt.nz/Council/Contact-us/Report-it>; and contact the NRC Hotline at 0800 504 639.

Tangiwai Baker, WDC Whangārei Heads Ward Councillor
www.tangiwaibaker.co.nz



TopSails
beach road

BRASSERIE

new zealand contemporary meets classic casual french

206 Beach Road, Onerahi
www.topsail.co.nz

09 436 2985
dine@topsail.co.nz

Winter opening hours:
Thursday to Saturday for dinner
from 5pm

- Same... deliciousness, views & team
- Slightly different... menu, hours & service
- More... choice, tables & dining opportunities

... so, Same but Different!

Pop in from 5pm Thursday to Saturday.
See you soon!

Keep your eyes peeled

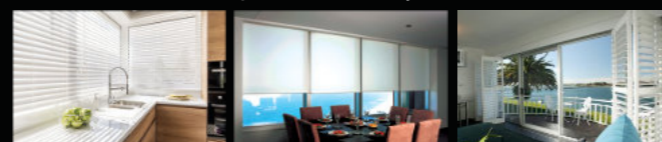
Our community Wai A Ariki Food Forest in Onerahi has been experiencing some ongoing heartbreaking theft, with people stealing plants and trees from the gardens and even thieving pavers and shade sails.



It boggles the mind that low-lives will steal food from a place that gives it away freely. Please report any dodgy behaviour at night in the gardens (88 Church Street) directly to the police, who are aware of the situation. The whole community feels the loss when trust is broken. Those responsible must remember that theft may give you a momentary advantage, but karma will ensure that you pay the price.

BLINDS, SHUTTERS & CURTAINS

Whangārei, Bream Bay & Districts



Rollers, Verticals, Venetians, Curtains,
Shutters, Outdoor Blinds

Ph Gail 0211 95 35 35

www.blindsandshutters.co.nz

TV AERIAL SERVICES

NORTHLANDS AERIAL SPECIALIST

FREEVIEW

SALES • SERVICE • INSTALLATION

UHF Aerial & Satellite • Freeview TV

• Domestic & Commercial • Radio/FM

• Campervan / Caravan Installs

Over 30 Years Servicing Whangārei

MACK WILKINSON
436 0508

M: 021 992 974
W: www.tvas.co.nz
E: mack@tvas.co.nz

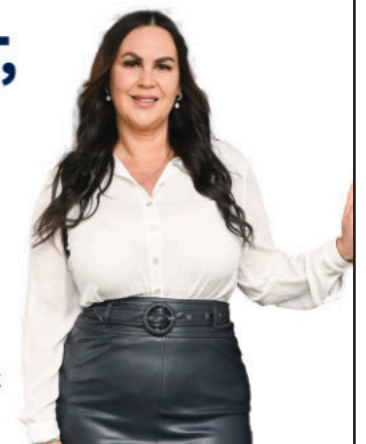
Two Year Guarantee



LOVE IT, LIST IT,
SELL IT WITH

Tracy

Tracy Dawson
022 468 2765
tracy.dawson@harcourts.co.nz
Optimize Realty Ltd Licensed Agent REAA 2008



Keep New Zealand Beautiful

Keep New Zealand Beautiful's Clean Up Week 2026 runs from September 18th to September 25th. Registrations for this annual community event are scheduled to open in July 2026 on the KNZB website.

KNZB is New Zealand's largest clean-up initiative, connecting volunteers nationwide. Registered volunteers can access free cleanup kits (gloves, bags) for their events, and dumping of the waste is often supported by partners like Waste Management and EnviroWaste. If you would like to join an existing project, you can search for registered public events on the KNZB events calendar. Clean Up Week 2025 saw thousands of volunteers remove around 30 tonnes of waste across New Zealand.

Good neighbours, safer communities

Neighbourhoods are more than just collections of houses—they are living networks of people who share space, routines, and, whether they realise it or not, responsibility for one another. In an age where many interactions are increasingly digital, the quiet strength of neighbourly care remains one of the most effective and human ways to build safer, healthier communities.



Looking out for your neighbours doesn't require grand gestures. Often, it begins with simple awareness: noticing when something seems out of place, recognising familiar patterns, and being attentive to changes. Unusual activity around a home can be a small signal that something might be wrong. These observations are not about suspicion—they're about care. Knowing that someone nearby is paying attention can provide reassurance and a sense of belonging that no security system can replicate.

Equally important is looking after your neighbours' property as you would your own. This might mean bringing in bins, collecting packages, or keeping an eye on things when they're away. These actions build trust and reinforce the idea that safety is shared, not individual.

However, being a good neighbour also means recognising when a situation goes beyond casual concern. If something appears genuinely unsafe—such as suspicious behaviour, signs of a break-in, or someone in distress—it's important not to hesitate in contacting local authorities. Calling the police is not an overreaction when safety may be at risk; it's a responsible step in protecting people and property. Community vigilance works best when it complements, rather than replaces, professional support.

Strong communities are built on a balance of awareness, respect, and action. When neighbours look out for one another, they create an environment where people feel seen and supported. Safety becomes a shared effort, strengthened by multiple sets of eyes and a collective sense of responsibility.

In the end, being a good neighbour isn't about constant vigilance or interference—it's about quiet consistency. It's about caring enough to notice, to act when necessary, and to respect the boundaries that keep relationships healthy. When communities embrace this mindset, they become not just safer places to live, but kinder ones too.

News from Parua Bay - PBRRA

The Village is buzzing lately, with the roadworks and footpaths being completed, to make a safer space for pedestrians and motorists. Thank you to everyone for slowing down as you pass through, or move within the area.

It has been a busy few weeks in Parua Bay, with the recurring weather events keeping us on our toes. We hope you all came through these events ok, and have some plans in place to cope with future ones. More on that later.

The skatepark continues to prove very popular, and the sports park will be busy with winter sports in these coming weeks. The new public toilets are being appreciated by locals and visitors.

Parua Bay Residents and Ratepayers Association (PBRRA) continues to meet regularly, to work on local projects for the benefit of all. Please let us know if there is anything you would like to see addressed or improved in our Village. We welcome anyone to our meetings, and encourage you to join our Association so we can keep you informed of what's happening.

If you have any questions, please contact us on: paruabayra@gmail.com

The PB Civil Defence Community Response Group opened up the Parua Bay Community Centre as a drop-in centre during the last cyclone event. Our small group of volunteers can initiate a Community-led Welfare Centre if needed, with support from Civil Defence. Cyclone Vaianu was not as severe here as initially predicted, but it was a good chance to look at emergency plans and procedures, in readiness. Fortunately we did not have any locals in need on the day we opened the centre, but did have some lovely neighbours pop in, and one even brought us hot scones—thank you!

Our takeaways from this event were:

- **Be Prepared** - thanks to CD warnings, locals were prepared for this event- checking on outdoor furniture, securing boats, stocking up their Grab Bags, filling water bottles and stocking up supplies, and updating batteries for torches and radios.
- **Check on your neighbours** - particularly those living alone, or who might need some extra support in an emergency event
- **If it is safe to do so, stay home** - avoid unnecessary travel
- **Have an evacuation plan** - think about where you might go - to friends or family, if your home is at risk from landslips, flooding, or tsunami. Have that Grab Bag and your emergency supplies at the ready, should you need to leave your home. Stay safe everyone.

Contributed by Barb Green (PBRRA)



NEWBERRYS FUNERAL HOME

Free Information Pack

Pre planning your own funeral is a considerate and caring thing to do for your family. Only you know what you really want. If we know too, we can carry out your exact instructions. To help with these important decisions; call us for your obligation-free information pack.

Whangarei's only qualified members of New Zealand Independent Funeral Homes Association.

Ph. 438 2644 (24 Hours)

Newberrys Funeral Home
Corner of Kamo Rd & Moody Ave, Kamo
admin@newberrys.co.nz
www.newberrys.co.nz

MeTime

skin and body care for women

massage - waxing - body scrub/tanning
eyebrow & lash treatments - facials

Contact Rebecca: 022 103 0840
13 Handley Place, Onerahi
email: metime.rebecca@gmail.com

See www.metimeforyou.com for a full list of services

KIWIKIDS
EARLY LEARNING CENTRE

"Providing for the healthy bodies and healthy minds of our kiwi kids"

PH 436 3085
www.kiwikidself.co.nz

4 Waimahanga Rd, Onerahi

» **Business Cards**

» **Flyers**

» **Posters**

» **Vinyl Labels**

» **Books**

» **Magazines**

» **Letterheads**

» **Folders**

» **Invoice Books**

» **Calendars**

» **Pads**

» **Rack Cards**

AND MUCH MORE!

ALL WORK GUARANTEED

0800 141 402

[/jopprint](https://www.facebook.com/jopprint)
info@jop.co.nz • www.jop.co.nz

design | print | distribution

HON DR SHANE RETI QSM

MP for Whangārei

Working together

P | 09 438 9992
A | 105 Cameron Street, Whangārei
E | shane.reti@parliament.govt.nz
W | shanereti.national.org.nz

Funded by Parliamentary Service & authorised by MP Dr Shane Reti, 105 Lower-Cameron St, Whangārei

Regional Councillor Amy Macdonald

A huge thank-you goes out to all the volunteers who keep our local sports clubs running. Your time, energy, and commitment bring our communities together and create great experiences for our kids and young people.

Bream Bay Sand Mining proposal: NRC is in opposition to the current sand mining proposal, a position that is based on both expert technical advice and also strong community feedback. It's encouraging to see the Fast Track expert panel have invited input from a wide range of groups, including community environmental organisations and WDC.

Acknowledging our Civil Defence volunteers: 2026 has already brought several extreme weather events to our region, and I want to recognise the outstanding work of our civil defence community responders. Local emergency

planning and preparation - much of it voluntary - is vital for keeping our communities safe. We saw excellent leadership and communication from the Onerahi Civil Defence group, opening up the hall for community use if needed.

I'm always happy to hear from you, please just get in touch - amym@nrc.govt.nz, or find me on facebook: Amy Macdonald - NRC Councillor.

Ngā mihi nui,

Councillor Amy Macdonald, Northland Regional Council

Report pollution and environmental incidents to the 24/7 environmental hotline: 0800 504 639

Disclaimer - this is my personal opinion and not that of the Northland Regional Council

Boaties urged to provide contact details

Boat owners in Northland are being reminded of council's navigation safety bylaws that every vessel occupying a swing or pile mooring is required to display contact phone number(s) and/or email addresses of the owner or owner's representative in case of emergency.

Northland Regional Council Deputy Harbourmaster Peter Thomas says in the past "Some have broken free from moorings or are already aground while others are still on their mooring but are slowly taking on water or are sinking." Other issues include damaged headlines, unfurled sails, unattended vessels breaking free or taking on water.

Photos were taken at the "No Sand Mining" rally at Ruakaka in March - great to see such a good community turn out and local politicians in attendance.



Cr Amy Macdonald and Mayor Ken Couper

Cr Amy Macdonald, NRC Chair Pita Tipene, Cr John Hunt and MP Huhana Lyndon



Onerahi School report



Kia ora koutou,

School camps. Chances are that if you grew up in New Zealand you have a vivid memory from your own time on camp. It may be of a challenge you managed to overcome or the bonds of friendship you developed. At Onerahi School, camps form a key part of our learning programmes.



Learning under the watch of Tāne Mahuta

Since the beginning of this year we have already had two successful school camps. First up in Term 1 we had Reorua (Year 4, 5, and 6 students) and their camp to the Kaipara District. On the way they stopped to visit Tāne Mahuta to deepen their understanding around caring for our environment. Staying at Oturei Marae saw tamariki sharing two communal sleeping spaces and exploring the kaupapa and whanaungatanga of marae life. Day two saw us travelling to Kai Iwi Lakes. There tamariki took turns in either taking a beautiful hike around the lake or heading out to sample some waka ama. Seeing the tamariki paddling their hoe (paddle) in unison across the still lake was a sight to behold. While being over deep water was exciting, for some it posed a challenge to overcome.



Timing, teamwork and success in Waka Ama

Challenge by choice is a phrase you may hear these days. Part of what supports tamariki to take on challenges is the support of the people around them. This includes other students as well as teachers but also the secret sauce to any great camp, the parent helpers. We have been really blessed over years to have a constantly refreshing team of parents that bring humour, care, and their own range of skills to camp. We would like to acknowledge and celebrate what they have done for our tamariki.



Splashdown as another child conquers the giant waterslide

Our second camp was our senior classes (Year 5 and 6 students) who ventured to Mangawhai at the beginning of Term 2. They focused on leadership opportunities and how our school values can help people live together harmoniously. While during the day a range of activities saw tamariki challenging themselves, at night things got spooky.

Surrounded by nature the whole camp gathered around a bonfire where we toasted marshmallows, sang together, and moved off in small groups to experience a Burma Trail. This Burma Trail had been upgraded by our parent helpers to allow various levels of frights and tamariki got to choose which level they wanted.

As always, some things change and some things stay the same. If you have a child or a grandchild heading on camp and their school is looking for volunteers, I highly recommend jumping in. You won't regret it and you may just create some new memories in the process.

*Ngā manaakitanga, Danny Hamilton
Tumuaki Tuarua / Deputy Principal*



GRAEME JOHNSON JEWELS & TIME

Clocks

Finest Collection in Northland
Timeless, Classic & Modern

Watches

Men's, Women's and Kid's
Time for all generations

Jewellery

Rings, Pendants, Earrings
& Bracelets
Timeless memories

Repairs

Specialists in all watch,
clock & Jewellery repairs
and restoration

435 2145

531 Kamo Road, Kamo
www.graemejohnsonclocks.co.nz

H2O PLUMBING SOLUTIONS

- New builds • Leak repairs • Hot water upgrades
- Maintenance • Bathroom /kitchen renovations
- Commercial plumbing



**For all your plumbing needs
contact Brook today
Email: admin@h2ops.co.nz**

09 302 2282 www.h2ops.co.nz

When things don't go well!
We are here to care ... offering ...

-  Accident and emergency care
-  Health checks and vaccinations
-  Trained veterinary nurses
-  Open 7 days
-  24 hour emergency care



PET CENTRES

PH 470 1060

Whangārei - 16-18 Maunu Road
Hikurangi - Cnr George & Park Sts
Onerahi - 165 Onerahi Road



Like us on Facebook  www.northvets.co.nz



Parua Bay Childcare

Nurturing childcare for
babies to 6 years old

6 Lamb Road, Whangārei
Phone: 09 436 5544



FLAMES

RESTAURANT, BAR & CAFE

OPEN DAILY

WE'D LOVE TO SEE YOU

BREAKFAST/LUNCH MON- FRI 7AM- 2PM

SAT/SUN 7.30AM- 2PM

DINNER MON/SAT 5.30-8.30PM

DELICIOUS COFFEE • COLD DRINKS • COOKED BREAKFASTS
HOT FOOD • LOCAL INGREDIENTS • SEASONAL MENUS

8 WAVERLEY STREET, ONERAHI, WHANGAREI, 0110
PH: 09 436 1539 - FIND US ON  

CLOSED PUBLIC HOLIDAYS

Local junior tennis player scores

Local Onerahi youth Sasha Kilgour has enjoyed a successful tennis season.

The 13-year-old Whangārei Girls' High School student has shown steady progress across a number of tournaments over the last season.

In December 2025, she competed in two Auckland events at Merton Road, Panmure, which included a strong international field. Sasha placed 5th in the first tournament before finishing 1st the following weekend.

In the final, she faced Tahitian player Reihani Tumg. After losing the first set 6-1 and trailing 4-1 in the second, Sasha recovered to win the set 6-4 and took the match in a super tie-break, 10-5.

"The Auckland tournament... that was really tough," Sasha said.

Other results this season include runner-up in B Grade Mixed Doubles at the Ollie Batger tournament and third place at the Northland Secondary Schools Championships across all age groups.

She was also recently named U14 Northland singles and doubles champion.

Sasha is a member of the Onerahi Tennis Club and competed in both junior and adult B Grade interclub this season. She has also been a Davis Cup ball person.

She is coached by Wesley Whitehouse of the Whitehouse Tennis Academy.



SPONSORED CONTENT

The do's and don'ts of AI made simple

Artificial Intelligence (AI) might sound complicated, yet it is really just smart computer tools that help us do things faster, like writing, searching for answers, or even creating pictures.

Do use AI as a helper, not as a replacement for your brain. For example, you might use it to help write a project, yet you should still check the facts and add your own ideas. Think of AI like a calculator, it helps, but you still need to understand the answer.

Do be careful with what you share. Don't type in private information like your passwords, home address, or business secrets. Once it's online, you don't always know where it goes.

Do keep learning. AI is changing quickly, and the more you understand it, the better you can use it. For example Google searching is a basic for of AI.

Now for the don'ts

Don't believe everything AI tells you. Sometimes it can get things wrong or make things up. Always double-check important information.

Don't use AI to trick people, like creating fake stories or pictures, or pretending something is real when it's not.

And most importantly, don't be scared of AI. When used the right way, it's a powerful tool that can make life easier, just like any tool, it works best when used responsibly.

While AI is a great tool, always remember your local IT professional are there to help, and when things break, we are always there for you.

Contributed by Vince Cocurullo



Vince fix it man
Vince Cocurullo
Northland's Fix-it man

IT • COMMUNITY PROJECTS • LOCAL ISSUES

- COMPUTER FAILURE
- REMOTE ACCESS
- EMAIL TROUBLE
- NETWORKING

OR JUST SOME FRIENDLY ADVICE

P 09 4388 834
E vince@cocurullo.co.nz
W www.cocurullo.co.nz



Bream Head planting day

Te Whara/Bream Head would like to invite the Onerahi community to join us for our annual planting day.

Each year we plant more trees than the last, and this time we are aiming to beat 2,500. We kick off at 8:45 on 14 June in Smugglers Bay. The session will wrap up at midday. It's a great opportunity to meet people, entertain the kids, and get the low down on local ecology straight from the rangers. Expect snacks and hot drinks. Check Facebook for updates the night before.

While you're there you can meet our new ranger, Skye, who has stepped into the shoes of his sister, Fern, after she moved on at the end of last year.

The big mission at the moment is monitoring - both pests and native fauna. Tunnel surveys are being conducted across the reserve to check in on stoats, ferrets, weasels, rats and mice. If we are satisfied we have numbers under control, it would be amazing to work toward releasing a population of



weta punga like you have on Matakoho. We are also working on kiwi counts and robin banding which will give us a lot to talk about at the planting day. Thanks again to the Onerahi community for the amazing support.

See you on the hill
The BHCT Team



1 in 3 Kiwis will receive a cancer diagnosis

Daffodil Day is on Friday 28 August. You can get involved at any time - see the Cancer Society's Daffodil website for options.

It's the generosity of New Zealanders on Daffodil Day that helps cancer patients and their families get the care and practical support they need; from crucial help getting to treatment via our free driving service, through to specialist nursing and psychology support, and accommodation for those needing life-saving treatment far from home.

How to support Daffodil Day - donate to the street appeal, volunteer for Daffodil Day work, fundraise, or buy Daffodils from the Daffodil Day Appeal. Register to fundraise in 2026 and give all that you can this Daffodil Day.

The Cancer Society is the leading non-government organisation dedicated to reducing the incidence and impact of cancer and ensuring cancer care for everyone in New Zealand. It is an independent charity and the largest private funder of cancer related research in New Zealand.

<https://www.daffodilday.org.nz/aboutdaffodilday>

PEPE'S DAIRY

ONERAHI SHOPPING CENTRE

110a Onerahi Road, Whangarei

Service with a Smile!

Mon-Fri: 7am - 8pm
OPEN 7 DAYS
 Sat-Sun & Public Holidays: 8am-8pm

09 436 3600



SKYLINE AIRPORT CAFE

FLY AND DINE

Monday to Friday: 5am to 5:30pm
 Saturday: 5:45am to 2:45pm
 Sunday: 5:45am to 5:30pm

Due to Air New Zealand dropping the mid-day flight from Monday through Thursday, May through July, the Cafe will be closed from midday to 4pm on these days.

Pop in to see us and have a coffee!



Whangarei Airport

Daily Air Services around New Zealand and the world with Air New Zealand

Other Services Provided: • Flight Training • Aircraft Maintenance • Helicopter Hire • Secure Carparking • Rental Cars

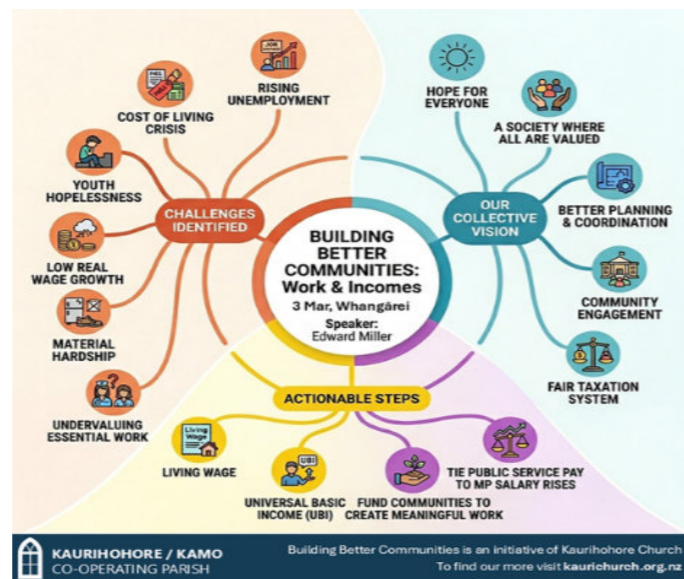
www.whangareiairport.co.nz • Skyline Café Open 7 days

Real local solutions

The 2026 Building Better Communities series recently concluded in Whangārei, providing a vital platform for local voices to address the region's most pressing social challenges. Held throughout February and March, the initiative sought to move beyond political rhetoric and reactionary headlines to focus on real local solutions.

Led by Kaurihohore Church in collaboration with St John's Golden Church and The Salvation Army, the series was grounded in data-driven insights from the latest Salvation Army State of the Nation reports. Each weekly session delved into critical topics impacting the community: Children and Youth, Crime and Punishment, Work and Incomes, Housing, Social Hazards, and Māori Wellbeing.

The format of each evening featured a local guest expert followed by small-group discussions where the community's own perspectives were the priority. These conversations led to the identification of actionable steps, such as establishing schools as support hubs to provide whānau care, supporting literacy through local organisations, and developing community gardens to foster connection and resource security.



Richard Smith, who organised the team running the series, emphasised the power of collective dialogue. "Ultimately, the series underscored that genuine connection and collective caring is the most effective response to the isolation, poverty, and unemployment facing our region. By tackling the systemic causes of insecurity rather than blaming individuals, we can finally break the cycle of despair that has held our community back for too long".

The series' insights are captured in the summary report, which serves as a record of the sessions. The summary has been distributed to local politicians and community leaders and can be found by request via the kaurichurch.org.nz website.

Contributed by Mike Neilsen

Foster parents needed!

The Whangārei SPCA are looking for dog & puppy foster parents. Many of the animals that come into SPCA Centres need additional care, treatment and socialisation before finding their new forever home. That's where foster parents come in. They give pets a temporary home to recover, administer medication, play with them and show them what it is like to live in a home.



SPCA centres send more than 13,000 animals out to foster every year. They anticipate needing the same, if not more in future years.

Every foster placement frees up space to bring another animal into SPCA care. You can help save the life of an animal by becoming a foster parent today.

The SPCA are incredibly short of canine foster homes. Shelter life is especially stressful for dogs and puppies, who require socialisation and training to grow into wonderful pets who cope well in society. Dogs and puppies that need foster care include mothers nursing puppies and orphaned puppies that are not yet ready for desexing, sick or injured animals needing medication, teenage dogs who require further training and/or socialisation and sometimes adults who just need time with a family.

If you are ready to foster, or for more information please head to www.sPCA.nz/foster

Contributed by Sue at SPCA

A Taste to Remember

This year, Monday 22 June to 17 July, North Haven Hospice invites you to honour those memories through "A Taste to Remember", a heartfelt fundraising initiative that celebrates meaningful dishes while supporting compassionate hospice care in our community.

Taking part is simple and personal. Choose a dish, cake, treat, beverage or flavour that means something to you, then gather friends, family or workmates to share it in exchange for a donation to North Haven Hospice. Your "taste to remember" could be a staff morning tea, a bake sale, a shared potluck, a family gathering, a dinner party or even a cooking class. However you choose to participate, you'll be helping ensure hospice care remains available to those who need it most. Your taste. Your story. Your way to give back.

To find out more and learn how to turn your "Taste to Remember" into a special and unique fundraiser, visit www.northhavenhospice.org.nz/taste

Contributed by Beth Dawson, North Haven Hospice

Celebrate National Volunteer Week

National Volunteer Week, 14 - 20 June 2026, honours the collective energies and efforts of volunteers across Aotearoa New Zealand.

Volunteering New Zealand have created a suite of free resources and editable templates to help you celebrate your volunteers and share the spirit of NVW in your workplace, school, community, or organisation. See <https://www.volunteeringnz.org.nz/campaigns/national-volunteer-week>

Onerahi Pharmacy

116 Onerahi Road
Phone: 09 436 0567
 Find us on FaceBook

care + advice
 Your local health professional

No more lobster

A ban on taking spiny rock lobster from the east coast of Northland as far south as the Hauraki Gulf was enacted from 1 April 2026. The ban connects to an existing closure of the inner Hauraki Gulf, creating a chain of restrictions along the northern east coast.

Changes to recreational daily bag limits also came into effect on 1 April for the packhorse rock lobster in all parts of the country. Three packhorse rock lobsters per person nationwide is now the limit. Fishery Officers will be patrolling and anyone caught breaking the rules could face a fine of up to \$100,000; and items used in the offending may be seized.

Based on a Beehive media release

• REAL ESTATE • DECEASED ESTATES
 • END OF TENANCY • NEW BUILDS
 • DOWNSIZING & RELOCATION

- House Washing
- Water Blasting
- Garden Clean-ups
- Rubbish Removal
- Interior Cleaning
- Carpet Cleaning
- Green Waste Removal
- Lawns
- Lawns & Garden Maintenance

MARKET READY

021 517 881

marketready2024@gmail.com
www.marketready2024ltd.co.nz

LET'S GET MARKET READY!

a graceful undertaking

THE FREEDOM TO DO IT YOUR WAY

A fresh approach to after-death care and funeral arranging

Contemporary and natural solutions, offering choice, facilitating creative, personalised family led funerals that truly reflect the uniqueness of every life.

Phone 09 988 9503 | 7 Dickson Road, Whangārei
info@graceful.co.nz | www.graceful.co.nz

Proud to be independent and locally owned

OVER 25 YEARS EXPERIENCE

Thinking of Selling?

No Overheads = Lower fees
 A 2% success fee when you list and sell with me

"Tracey Made Selling Our Home Effortless!"

I can't recommend Tracey enough for selling our house in less than two weeks! Her extensive experience and in-depth knowledge of the real estate industry, including all the associated people, services and processes, made all the difference. We were introduced to Tracey by a close friend who has trusted her for the past 20 years, and now I completely understand why! We trusted Tracey completely and followed her advice, which led to a smooth and stress-free sale. If you're looking for someone who brings incredible industry knowledge, honesty and integrity to the table, Tracey is the one to go to. Highly recommended! We are so grateful." *Jon and Liz Gow*

Tracey Lovelock-Butler

P: 027 8595 777 E: tracey.lb@expnz.nz

eXp New Zealand Ltd - Licensed REAA (2008)

Delivering a quality, boutique experience and achieving a premium price for your property - whatever the market!

Faith for today

A sliver of comfort to face the unknown



Under control



How disappointing to see the head coach of Auckland FC red carded for bad behaviour. It sends out the wrong message to the younger players and fans.

In contrast, when the head coach of a university baseball team retired, one sportswriter noted an amazing statistic. While winning 1,466 games and 22 conference titles, this coach was never red carded by a referee or umpire. A former player described his

coach as a "legend, a winner, but above all else, he's a gentleman, on and off the field".

That tribute made me stop and consider my behaviour in the game of life. Amid the daily pressures and confrontations, how do I react to people at home, at work, or on the highways? Are my words and actions consistent with my profession of faith in Christ?

It's clear from scripture that God places great value on self-control 'He who is slow to anger is better than the mighty, and he who rules his spirit than he who takes a city' (Proverbs 16v32). A patient person receives greater commendation than a powerful warrior. A person whose temper is under control rates higher marks than a conquering hero.

One fruit of The Holy Spirit listed in Galatians 5v23 is self-control. That quality enables us to stay composed when anger flares all around us. And that's one of the most important victories we could ever win.

The one who loses his head is usually the last one to miss it.

God's blessing on you all,

Pastor Ron Brewer (semi-retired, Onerahi)

REGULAR EVENTS

Alcoholics Anonymous - Fellowship available at Onerahi Community House, 130 Onerahi Road, Onerahi on Mondays 7:30pm; and at the Parua Bay Mt Manaia Bowling Club Rooms, 1347 Whangārei Heads Road on Mondays 7:30pm. See - <https://aa.org.nz/newcomers/faqs/>. If you are struggling and can't find a meeting please call 0800 229 6757 or email AA on help@aa.org.nz

Community Adult Ballet Classes - Silver Swans: Tues 10:30am, Wed 5:30pm, Sat 4:30pm; Adult Improver-level open class: Wed 6:40pm; Floor Barre class: Sat 1:00pm; Adult & Teen Intermediate-level: Open class Sat 1:50pm & Repertoire class Sat 3:15pm; St. Stephen's Church Hall. www.balletnorth.nz

Community Education Whangārei (CEW) at Kamo High School - Website: <https://www.cew.ac.nz/> Email: cew@kamohigh.school.nz; Phone: (09) 435 0889; Class venue: Unless otherwise stated all classes are held at Kamo High School

Creating with Love Art Workshops - adult colouring-in workshops, held on Thursdays 11-12 noon. Please RSVP with Multicultural Whangārei (09) 430 0571 or email info@mwhg.org.nz

Green minded events - a website that updates all upcoming eco events is <https://www.ecosolutions.org.nz/pages/upcoming-events>

Jolly Dodgers Scooterers group - If you are keen to join this local Onerahi group, call Wendy on 021 031 7781 or Denise on 022 087 4955

Justice of the Peace - For all your certification needs visit the JP Service Desk at the Onerahi Library on Thursday afternoons (between 2-4pm)

Love Whangārei Monthly Clean Up - Check LWMCU Facebook page for upcoming events. <https://www.facebook.com/LWMCU>

Make & Meet - fortnightly weekend sessions at Reyburn House Art Studio. Every workshop is a surprise—one week it's crochet, the next clay. Bookings essential. Find us on Humanix (search: Make & Meet Whangārei)

Matakohe/ Limestone Island Volunteers - Volunteer day is on the first Wednesday of every month. The group leaves from the Onerahi Jetty at 9 am. Volunteers work on a variety of jobs to suit whatever volunteers feel like doing. Bring your lunch. Home by 2pm

Men-Tall mental health support - Monthly support group for men dealing with everyday struggles - every third Monday of the month, from 6:30pm, at Brothers Barbers in Te Kamo. Contact Josh MacFarlane, 021 0255 1594 or josh.macfarlane@mentall.org.nz

New Zealand Society of Genealogists Inc - Whangārei Branch - Meets 1st Saturday, February to December, 9am - 12 noon in the May Bain Room, Whangārei Central Library. Contact Kathy 021 263 7358 or Whangarei@genealogy.org

Onerahi CoastLine Action Group - Volunteers meet for an hour a week on Sundays (Summer: 7-8pm; Winter 4-5pm.) Would you like to help us regenerate neglected council reserves? Contact Valerie Green-Moss 0210672760 or Brian McLachlan 4363660

Onerahi Indoor Bowling Club - Every Friday 1pm to 3.30pm in the Onerahi Community Centre Hall. All are welcome. If you want to know more, contact Marjorie on 021 217 9061

Onerahi Sit-Fit - At Hope Onerahi Church, 137 Onerahi Road, Mondays 10.30 am

Onerahi Garden club - Meets the third Friday of the month, 9.30 til 12.00 noon, at the Onerahi Community Hall. Speakers each month, and garden visits. New members warmly welcomed. Contact Maureen on maureen101@hotmail.com

Onerahi Hall market - First & third Saturdays of every month and all other Saturdays unless otherwise advised. 8 am-12 pm. Plants, garden produce, jams/pickles, art/craft, 2nd hand goods etc. Inside stall fees \$13; Outside stall fees \$10; Kids stall fees - inside \$6, outside \$5. Phone Jenny (09) 436 0009 (preferably in the evening) to book a space - or just turn up!

Onerahi Playcentre - Tuesdays and Fridays, from 9.00am to 12.30pm during school term time. 1B Church Street, Onerahi, Phone: 027 880 3894

Onerahi Silver Swans - For more information about Silver Swans and other adult and teen ballet classes, please visit balletnorth.nz. See pg 23

Onerahi Strength and Balance Classes - Mondays 8:45-9:45am and 10-11am, and Wednesdays 8:45-9:45am and 10-11am held at St. Stephens Church. \$5.00 per person or \$5.00 per couple

Onerahi Tennis Club - for all age groups and abilities. See facebook and website: www.clubspark.kiwi/OnerahiTennisClub. **Casual court use available** - place \$10 in the honesty box if you use a court. Call 0210 8442023, or email wkthomas99@icloud.com

Parua Bay Village Farmers and Crafters Market - Open every second Sunday between 9am - 1pm; Parua Bay Community Centre, 1341 Whangārei Heads Road, Parua Bay

Repair Cafe Whangārei - Volunteers repair most things for a koha. Every third Saturday of the month, 1.30 - 4pm, Reyburn House at the Town Basin. For more information, refer to the Facebook page or email karen@force.org.nz

Wai A Ariki Food Forest Gardening Group - meets 10am on Fridays - everyone welcome

Whangārei Budgeting Service - FREE Financial Mentoring: Our financial mentors have the skills to negotiate debt repayments and discuss debt solutions with creditors

Whangārei Choral Society - Do you love to sing for pleasure? We meet Mondays, 7-9pm, at St John's Golden Church, 147 Kamo, to rehearse for 3 annual concerts. No auditions. Our friendly welcome mat is out to men and women, all ages. More Info - Meg - 027 337 9072 or Whangarei.choral@gmail.com

Whangārei Flying Club - Sunday Social 12:30pm every Sunday, Hangar 10, Whangārei Airport, Handforth Street, Onerahi (access via Gate 4, Handforth Street). Come for home-cooked burgers and home-made cake for only \$10 and talk to our friendly team of pilots and instructors. You can even go for a trial flight if you want. www.Whangareiflyingclub.com

Whangārei parkrun - a fun event where you can "run, walk or roll" every Saturday. It's a 5km course starting and finishing under Te Mate A Pohe Bridge in Port Rd. It's free to enter by going to <https://www.parkrun.co.nz/register>. We are there by 8am, come and join us. Open to all no matter what speed or age you are

Whangārei Scale Modellers Group - Meet third Tuesday evening of every month, 7-9pm at Northland Hobbies, 10 John Street Whangārei. Open to all with an interest in all types of scale modelling irrespective of age and skill level.

Whangārei Scottish Country Dance Club - The Scottish Country Dance Club meets every Thursday at the Onerahi Community Hall at 7.30pm. All are welcome. If you want to know more before arriving, call Fiona on 437 1817

155 Whare Āwhina Snack Packs - Every Monday during term, one per child, all you need to add is the sandwich. Request through Facebook messenger OR come to 155 Open Arms (Corner Robert and Walton Sts) OR 155 Kamo Rd on Monday mornings between 8.30am and 9am

155 Whare Āwhina Food Bank - 155 Open Arms, 102 Robert Street, Whangārei. Call us on 09 437 0185 Ext 4 or freephone 0800 120 926 to request your parcel. Whānau can receive two parcels per month

EMERGENCY NUMBERS

Aviva	For free 24/7 support line, call 0800 AVIVA NOW (0800 28482 669)
Elder Abuse Helpline	0800 32 668 65 Open 24 hrs text: 5032, email: support@elderabuse.nz
Family violence info	0800 456 450
Gandhi Nivas	Supporting men to be free from violence 0800 426 344
Hey Bro helpline	Supporting men to be free from violence 0800 HeyBro (439 276)
Need to talk?	Free call or text: 1737 for mental health support from a trained counsellor
Oranga Tamariki line: for concerns about children and young people	0508 326 459, email: contact@ot.govt.nz 1737
Safe to Talk sexual harm helpline	0800 044334, text: 4334, email: support@safetotalk.nz
Sensitive Claims ACC	0800 735 566
Shakti - for migrant and refugee women	0800 742 584 Open 24 hrs
Shine domestic abuse services	0508 744 633 Open 24 hrs Live webchat is also available
Rape Crisis	0800 88 33 00
Victim Support - support for men and women	0800 842 846 Open 24 hrs
Women's Refuge crisis line	0800 733 843 Open 24 hrs
Youthline	0800 376 633, free text: 234, email: talk@youthline.co.nz

Venues available for hire in Onerahi, Parua Bay and Whangārei Heads area

Whangārei Cruising Club	Clare O'Donnell	wccinc@extra.co.nz 09 438 9043
Onerahi Community Hall & Community House	Heidyn Harrison	onerahicomunity@gmail.com 022 085 8286
Onerahi Bowling Club	Roger Kerr-Davis	027 390 7185
Onerahi Rugby Club	Fiona Raymond-Paikea	onerahirugby@yahoo.com. The Onerahi Rugby Club has had a recent facelift and renovation, and is available to other clubs and sports groups to use - please call us on 021 228 5982.
Onerahi Soccer Club	Fiona Ellis	onerahifootballclub@outlook.co.nz
Onerahi Yacht Club	Dave Cochran	024 438 8911
Hope Church	Secretary	09 438 1667
Raurimu School Hall	School Office	09 436 0820 Ext. 2
St. Stephen's Church Hall	Paul Doherty	021 189 4797 or 09 436 0207
Tamaterau Hall	Jane Kippenberger	021 463 330
Parua Bay Community Centre	Richard Burgoyne	bookings@paruabaycommunitycentre.org.nz
McLeod Bay Hall	Jos	hallbookings@whca.nz
Taurikura Hall	Pearl Newman	021 545 087

Whangārei District Council Hotline: 0800 932 463
Onerahi Police (09) 436 0222

ONERAHI COMMUNITY CHURCH

Sundays 10am Raurimu Ave School Hall

... the name of Jesus ...
there is no other name ...
by which we must be saved.

Acts 4:10-12

Contact: hello.onecc@gmail.com



Angela Bilyard-Smith (N.Z.C.A.D.)
ARCHITECTURAL DESIGNER
NZCAD LBP
Parua Bay Whangārei
RENOVATION + NEW BUILD
FROM BEGINNING TO COMPLETION
021 211 1579
smithbilyard@gmail.com

Lawn Mowing by your Local Expert

- RESIDENTIAL MOWING
- COMMERCIAL MOWING
- HEDGES & PRUNING
- GARDENING / SPRAYING
- SECTION CLEAN-UPS
- RUBBISH REMOVAL
- GUTTER CLEANING
- ALL WORK GUARANTEED

Jim's Mowing
Phone 0800 454 654
BOOK ONLINE at www.jims-mowing.co.nz
Fully Insured and Security Checked for your peace of mind

DOUGLAS ROOFING
Call Douglas Roofing for your FREE, no obligation quote
• New Roofs • Re-Roofs • Roof Repairs • Spouting
027 892 7770 • www.douglasroofing.co.nz
Email: admin@douglasroofing.co.nz

Citizens Advice Bureau
Not sure? ASK US.
We provide free, confidential and independent information and advice to help you understand your rights and responsibilities.
154 Bank Street, Whangārei
09 438 8046 • whangarei@cab.org.nz
www.cab.org.nz

Joy at the Bay
HAIR SALON
1379 Whangārei Heads Rd. Parua Bay
Call for an appointment or book online
www.joyatthebay.com
Phone 436 5002

Mon 9am - 4pm
Tue 9am - 5pm
Wed 9am - 7pm
Thurs 9am - 5pm
Fri 9am - 6pm

OYC ONERAHI YACHT CLUB
HALL FOR HIRE
Our waterfront hall has capacity for over 100 people and is ideal for • Birthdays & celebrations
• Corporate events • Weddings & special occasions
Email: oycsailing@hotmail.com

UPCOMING EVENTS

Now – 22 June - Tiakina Whangārei Backyard Trapping Competition. Register at tiakinatetaikerau.nz and receive a rat trap kit (while stocks last)

Monday 1 June - Monday Market at Kaurihohore Public Hall, Apotu Road, Kaurihohore. Also on Labour Day (26 October) - open from 9am to 1pm

Saturday 6 June - Felted Slipper Making Workshop - at He Awhi Rito, 8 First Avenue, Whangārei, 11-3pm, timebank members: 4 time credits, non-timebank members - \$10. Register with janeype.ttimebank@gmail.com

Sunday June 14 - Te Whara/Bream Head annual planting day - meet at Smugglers Bay, 8:45am till noon. See page 19

Monday 15 June to 17 July - Puanga Matariki Festival - A special celebration with a series of cultural events happening within the Whangārei District for people to come and celebrate together. Find out more on page 5

Sunday 14 - 20 June - National Volunteer Week - honours the collective energies and efforts of volunteers across Aotearoa New Zealand.

Sunday June 21 - Onerahi Community Association AGM 3pm at the Onerahi Community Hall

Monday 22 June to 17 July - Taste to Remember - a fun fundraiser for Northhaven Hospice, visit www.northhavenhospice.org.nz/taste and see page 21 for more information

Wednesday 24 June, 10 July & 5 August - Key Workshops on 'Self Esteem and Confidence Building', 'Take Charge of your Life', and 'Stress, Health and You'. Presented by Gwendolyn Needham, 10-1pm, \$10, register 09 437 7183 or e-mail be.free@xtra.co.nz

Thursday July 9 - Matariki Celebration dawn service at St Stephens Church 6.00am. All welcome

Friday 10 July - Matariki Public Holiday

Wednesday 15 - 18 July - Quarry Festival of Light! - An immersive experience for the whole family. Across 4 nights you're invited to explore this world of wonder and entertainment. Tickets are allocated in 15 minute entry sessions: \$10 General, \$30 Whānau (4 general tickets). Children under 3 are free

Friday 28 August - Daffodil Day - Check out <https://www.daffodilday.org.nz> to see how you can contribute. See page 19

Saturday 29 August - Stamp Fair at St Johns Golden Church, Kamo Road, Whangārei from 9am. Dealers for all things philatelic will be present. Children's corner. Further details available from Barry Jones, Secretary, on 0212444140, cjnzbj@yahoo.com or 612 Three Mile Bush Road.

Friday 18-25 September - Keep New Zealand Beautiful week. See page 14

Thursday 1 October to 14 October - Whangārei Silver Festival



Want your free community or sporting activities highlighted here? Notice something is still advertised here but is no longer offered?

Email: onerahiorbitmagazine@gmail.com.

Onerahi Orbit is not responsible for any events listed here that are cancelled for any reason. Please check with local event organisers for confirmation.

WINTER TIDE TABLES

Download your own copy of tides tables for Northland at <https://www.nrc.govt.nz/resource-library-summary/publications/coast/northland-tide-tables/>



Deloraine Cattery.com
Free Night for New Customers!

New to our cattery? Enjoy a **free night** this winter! Book now and mention **'WINTER'** to claim your free night.

Valid for stays in June, July & August 2026.

Treat your cat to comfort and peace of mind!

LUXURY HOLIDAY RETREAT FOR CATS

DELORAINECATTERY.COM · ENQUIRY@DELORAINECATTERY.COM · 50 KONINI STREET · RIVERSIDE · WHANGAREI
 OPEN 7 DAYS BY APPOINTMENT · 9 -10.30AM & 4.30 - 6PM · CLOSED SUNDAY MORNING · VANESSA WILSON · 021 46 36 16