

# Onerahi Orbit

Free to you from the Onerahi Community Association

June/Winter 2025

Covering Onerahi, Parua Bay, Pataua and Whangārei Heads



The Onerahi women's football team has won the inaugural Dave Alabaster Cup. The epic battle occurred on the new fields at Onerahi Football Club on Saturday the 29th of March. The Onerahi Football Club, champions of Northland's 2024 Christina Taylor Cup, played Waitemata Football Club, the Auckland Carol Waller Cup winners, and won the match 1-0.

Thanks to Karen Maisey for the photos.

Despite controlling large portions of the match, Waitemata couldn't quite find the finishing touch in front of goal. Onerahi FC struck in the 75th minute and showed incredible resilience—digging deep,

*Continued on Pg 2*

Onerahi Whānau Sports Fest Pg 6 • Onerahi ANZAC Commemoration Service Pg 9  
• Matariki events Pg 10



*Deloraine Cattery.com*  
**Free Night for New Customers!**

New to our cattery? Enjoy a **free night** this winter! Book now and mention **'WINTER'** to claim your free night. Valid for stays in June, July & August 2025. Treat your cat to comfort and peace of mind!

LUXURY HOLIDAY RETREAT FOR CATS

DELORAINECATTERY.COM • ENQUIRY@DELORAINECATTERY.COM • 50 KONINI STREET • RIVERSIDE • WHANGAREI  
OPEN 7 DAYS BY APPOINTMENT • 9 -10.30AM & 4.30 - 6PM • CLOSED SUNDAY MORNING • VANESSA WILSON • 021 46 36 16

# Haere mai,

A warm welcome to all our readers, advertisers and contributors.

Our community has had a wonderful sporty summer (see pages 1, 5 and 6), and has commemorated ANZAC Day (see page 9), which is always a symbolic day of autumn drifting into winter.

Ahead of us is Matariki (see page 10) which prompts thoughts of planning for the future entwined with spending time with our memories of loved ones from the past.

At the Orbit, we'd like to know more about what you'd like to see in the magazine, and what you would like to share with your community through the Orbit. Send us your thoughts, and photos to share - see the contribution details in yellow in the footer below.

Email: [Onerahiorbitmagazine@gmail.com](mailto:Onerahiorbitmagazine@gmail.com) or post to Orbit, PO Box 3031, Onerahi 0142.

Stay well and be kind,

*Nga mihi from the Orbit team*

## Letter to the editor

Just a short note to say thank you for the Onerahi Orbit. Now that we no longer have a community newspaper, your magazine is doubly important.

### This April 2025 edition has given me:

- The dates for the Easter Arts Trail
- News about the new crash fire building at the airport
- Info about weed control
- News about upgrades to the Aquatic Centre and the Rose St bus hub.
- Plus a whole lot of other community news.

Much appreciated.

Val Monk, Tamaterau

### From Pg 1

defending with everything they had, and producing some outstanding goalkeeping to hold onto their lead.

The cup, which is set to be an annual season opener, is named for Dave Alabaster, a Northland football stalwart who served as a player, coach and administrator for Northland clubs and the NFF and NRF teams. Dave is a long-time supporter of girls' and women's football and helped create opportunities for girls to play and take part in festivals; particularly in girls-only competitions.

## Contents

Onerahi Women's Football.....	1
Letter to the Editor.....	2
President's report.....	3
A local Onerahi tennis champion.....	5
More about the Onerahi tennis club.....	5
Locals supporting locals.....	5
Onerahi Community Awards.....	6
Onerahi Whānau Sports Fest.....	6
Dragonfly Springs Wetland Sanctuary.....	7
Wai A Ariki food forest report.....	8
Elaine's legacy.....	8
ANZAC Day memories.....	9
The Matariki Festival is ON!.....	10
North Travel.....	11
Onerahi School report.....	12
Onerahi beach cleanup.....	12
Mayor's Message.....	13
Hon Dr Shane Reti.....	14
Number Works and Words.....	15
Condolences for the family of Kevin Barry.....	16
IT Talk.....	16
Change is coming to our water services.....	17
At home in Onerahi - Silke Hendel.....	18
Volunteer of the year - Mike Peacock.....	19
Bream Head - Join us for community planting day.....	19
Out of the Ocean, into the Fire.....	20
Breaking the silence - tackling loneliness.....	21
Faith for today.....	22
Emergency Numbers.....	22
Venues for hire.....	22
Local News.....	23
Regular and upcoming events.....	24

**Onerahi Community Association**

**AGM ANNUAL GENERAL MEETING**

**Sunday 29th June 2025 at 3pm in our Community Hall.**

**Join to become a member of our Community!**



- Cultivate and nurture the interests of the community of Onerahi
- Promote the district
- Assist residents
- Develop and administer facilities

## President's report June 2025



### Tena koutou

#### From feast to famine the chaotic unseasonal weather continues.

It was not too long ago when all we heard about was lack of rain, hot days, and water restrictions. Then, around Easter, it all changed with tropical cyclones turning things upside down. Rainfall records were set while our lawns continued to grow with the extended warmer temperatures.

These seasonal fluctuations can also be reflected in our interactions. On the low side we still have a few members of the community whose behaviour negatively impacts others, with theft and anti-social behaviour being experienced. This is countered by the continued surplus of energy of community members seen in interactive community activity in the Onerahi Whānau Sports Fest featuring whānau groups actively participating, and the ANZAC service, a first for Onerahi, seeing plenty of support.

The hanging baskets in the shopping precinct grew very prolifically this year and each has been sold by council to adorn other properties.

This quarter we recognise a few more community members who generously support others in the community and we recognise these Community Champions (page 6).

The AGM for Onerahi Community Association is due on June 29, and the summary of the year's activities will also be presented then. We will be announcing two additional Onerahi of Merit recipients at that time. The AGM is a time to reflect on successes and achievements over the past year, but it is also the time to lay the foundations for future activity. This year will also see a change to the constitution to meet the changing requirements of Incorporated Societies and Charitable Trusts - part of this involves active membership.

The Community Hall and house both have seen increased usage by community groups and have received a bit of maintenance and refreshing, with guttering and downpipes replaced, safety features improved and attention given to

cleaning and upkeep. Community grants remain available for youth, environmental, sport and recreation, arts & culture, education, community well being and hardship. Application forms are available via [onerahicomunity@gmail.com](mailto:onerahicomunity@gmail.com)

The committee of the Onerahi Community Association is focused on "Connecting the Onerahi Community" through decision making and recognition of the good that goes on. Please keep us informed about things that we can attend to, to promote and support.

Grant Harrison  
President



Grant Harrison and Heidyn Harrison at the ANZAC service

**HOPE ON ERAHI**  
PRESBYTERIAN CHURCH  
135 Onerahi Road • Office: 438 1667

Minister: Howard Carter 027 750 8602

Sunday Worship @ 9.30am. All Welcome!

Mainly Music in the Church Hall – Every Wednesday 10am (during school term). By donation. Contact Nancy Dodds - 436 1444

Sit Fit \$5 – Monday 10.30am - Hope Onerahi Church Hall  
'Use it or Lose it' - Contact Bett Harvey 021 208 6719

Published in April, June, August, October, and December.

The Onerahi Orbit is a not-for-profit publication owned by the Onerahi Community Association, that reports the good news in Onerahi, Parua Bay, and Pataua. 4,000 copies are printed by JOP and distributed by volunteers throughout this area; readership is approximately 12,500. Opinions expressed in signed articles, or in advertisements appearing in the Onerahi Orbit are those of the author and advertiser and do not reflect those of this newsletter nor its publisher. No part of this publication may be reproduced without the prior written permission of the editor, writers, and owners of Onerahi Orbit.

Follow us on Facebook  
[www.facebook.com/onerahiorbit](http://www.facebook.com/onerahiorbit)



Editor: Margie Kent  
Email: [onerahiorbitmagazine@gmail.com](mailto:onerahiorbitmagazine@gmail.com)  
**Stories of 400 words or less are due for the next Orbit by 4 July 2025 - share your news by emailing Margie at [onerahiorbitmagazine@gmail.com](mailto:onerahiorbitmagazine@gmail.com)**

Advertising: Meg - 022 641 9786  
Email: [onerahiorbit@megatype-publishing.co.nz](mailto:onerahiorbit@megatype-publishing.co.nz)

Design: Megan Lavin-McIsaac 022 641 9786  
Email: [onerahiorbit@megatype-publishing.co.nz](mailto:onerahiorbit@megatype-publishing.co.nz)

Accounts: Rose Tantau 438 5499  
Email: [ccoca@xtra.co.nz](mailto:ccoca@xtra.co.nz)

Deliveries: Allan Westlake 021 437 591

**Morris & Morris Funerals**

Pets grieve too.  
Our team encourage you to have your loved one's pet join & support you during this time at our facilities.

199 Kamo Road, Whangarei 0112  
PO Box 8043, Kensington 0145  
Phone 09 437 5799

15 Gladstone Street, Dargaville 0310  
PO Box 306, Dargaville 0340  
Phone 09 439 8048




# HAMMER HARDWARE

## ONERAHI

WE'RE YOUR LOCAL

**Kent Nexa Electric Outdoor Heater 2400W**



**\$249**  
each

**Kent Nexa Top Mounted Electric Heater Stand**

**\$149**  
each

**Goldair Ceramic Tower Heater with WIFI 2.4kW**



**\$229**  
each

**Nouveau Fan Heater 2000W**



**\$19<sup>98</sup>**  
each

**Nouveau Convector Heater 2kW** **\$39<sup>98</sup>**  
each



**Nouveau Mini Oil Column Heater 650W**



**\$49<sup>98</sup>**  
each

**Number 8 Kindling 10 Litre**



**\$11<sup>68</sup>**  
each

**Tui Firewood 8kg Bag**



**\$20<sup>68</sup>**  
each

**Tui Wild Bird Seed 10KG**



**\$39<sup>99</sup>**  
each

**Tuffy Long Roll 4 PK**



**\$14<sup>99</sup>**  
each

**Paseo Toilet Tissue 18 Pack**



**\$15<sup>29</sup>**  
each

**Bata handyman Gumboots**



**\$41<sup>98</sup>**  
pair

**DampRid Moisture Absorber Hanging Bags 3 pk 437g**



**\$18<sup>90</sup>**  
each

**DampRid Disposable Moisture Absorber 510g**



**\$11<sup>98</sup>**  
each

**DampRid Moisture Absorber Refill 3.4kg White Crystals**



**\$26<sup>98</sup>**  
each

**Number 8 A-Frame Aired 12.3m White**



**\$24<sup>99</sup>**  
each

**AquaBlue Laundry Powder**



**\$14<sup>99</sup>**  
each

## A local Onerahi tennis champion



**Sasha Kilgour recently captured the Northland U12 Girls Tennis title at the Northland Junior Championship, held on Sunday, 6th April in Te Kamo.**

Sasha won her final game of the tournament against Hera Lyndon winning 6-0, 6-0 in straight sets on a beautiful Autumn Sunday.

When asked what she thinks about during especially tough games, she says that she pictures herself playing for New Zealand in an important match. A committed member of the Onerahi Tennis Club for the past four years, Sasha's passion for the sport has truly flourished over the last nine months. She has received guidance from tennis coach Pete Stenberg and she trains up to four days a week at the Onerahi courts and in Te

Kamo, weather permitting. She has also begun traveling to Auckland to gain experience in more competitive matches as she works to improve her national ranking.

Sasha dreams of one day representing New Zealand on the international stage—ideally at the Brisbane Olympics.



please place \$10 in the honesty box at the clubhouse if you use a court.

If you're keen to follow up or join the club, check out their website at <https://clubspark.kiwi/OnerahiTennisClub>, get in touch by calling 0210 844 2023 or emailing [wkthomas99@icloud.com](mailto:wkthomas99@icloud.com)



## Locals supporting locals at our playcentre

**A set of new bikes and scooters have been a hit at Onerahi Playcentre, after a generous donation from Onerahi New World.**

Parents and caregivers of preschool-age babies and kids are welcome to visit during the centre's sessions on Tuesdays and Fridays 9.30am - 12.30pm during school term time.

For more information, please email [onerahi@playcentre.org.nz](mailto:onerahi@playcentre.org.nz)

Contributed by Natalie Carmichael

## More about the Onerahi Tennis Club

The Onerahi Tennis Club enjoys arguably the best view of any tennis club in New Zealand. The four courts lie snuggled into the hillside at the bottom of Ormiston Road, opposite St Stephen's Church on Church Street.

The club started its life on Domain Road, near the airport, and was shifted to its present site in 1939 when the airport was extended. In 2002 the four courts were upgraded to a sand based astro turf which is easier on the legs and cooler than the original bitumen courts.

In earlier decades the club boasted a large membership with several inter club teams and top level provincial players. The club currently has slightly over 100 members, including about half juniors and half senior, veteran and family members.

Recently, floodlights have been installed on two of the courts and the playing surface on courts one and two are being replaced.

Casual Court Use is available to the public -

HELPING YOU GET THE **JOB DONE**

**Winter Hours:**  
Monday to Friday 8am - 5pm  
Saturday and Sunday 8am - 4pm

**436 3114**  
Cnr Church and Whangarei Heads Rd, Onerahi



Open from

**7.30am to 8.00pm Monday to Friday**  
**8.00am to 8.00pm Saturday to Sunday**

Phone 09 436 8008

# Onerahi Community Awards

## Steve Phillips - November 2024

Steve has been part of the volunteer crew at the Dragon Fly Springs gardens for a number of years. He has involved himself in all activities around these gardens, including providing guided experiences for young people.

## Paul Doherty Received the Onerahi Order of Merit - December 2024

## Karen Hawthorne and Mary Tingey - January / February 2025

For continued contribution to the Wai A Ariki Community Food Forest - Karen and Mary are avid gardeners and travel regularly to work on and in the community gardens. They have created and installed an irrigation system for the community gardens, adding to the sustainability of the gardens as a community resource.

## Elaine Winger - March 2025

Elaine now aged 97, was an avid pianist from her early years. She recently donated her piano to the Onerahi Community Hall so others could get the benefit of using it. Her piano was made in about 1885 and shipped to NZ in the early 1900's.

## Wendy Giffin - April 2025

Wendy is a long serving community member with a particular focus on those in the community who are disadvantaged. She actively seeks to listen to and support members of the community in need. Recently she put her energy into helping coordinate the Onerahi ANZAC service.



# Onerahi Whānau Sports Fest

**This summer, the Onerahi community hosted weekly Onerahi Sports Fest activities - attracting some 150 children and young people and 90 adults to its Onerahi primary school venue.**

Activities offered included: cycling; volleyball; football; turbo touch and snag golf. The sessions ran for six weeks from 4.00pm - 5.30 pm during February and March on Wednesday afternoons and culminated in a BBQ for all participants. A highlight of the series was the Fire Brigade arriving and hosing down the slippery slide.



A feature of the days was the large number of whānau groups participating together in the unstructured play activities. "Community connection through activity was what it is all about - and seeing the different groups engage was very rewarding" said key Organiser Jovan Haunui - Tawhiao



from Te Puna Awhina (Community Connect).

The Onerahi Primary School staff got behind the event, with staff running the BBQ weekly and taking the opportunity to meet parents in a relaxed environment. "The kids had fun, the parents took part in activities with their kids, the community got better connected. This is what we hoped for," said Onerahi Community Association Chair Grant Harrison. "We hope to run another of these later in the year."



# Dragonfly Springs Wetland Sanctuary

**Dragonfly Springs Wetland Sanctuary is the dream creation of Jeremy Busck and Pamela Winter. It is a restored wetland used primarily as an educational asset. Jeremy Busck purchased the land in 2004, with the goal of developing and ultimately gifting it to their community.**

In 2006 development began with geological studies and ecological studies, and clearing the rubbish, gorse, pampas and a zillion weeds. By 2008 a landscape plan was developed and digger work created the design of the storm water cleansing wetland.



In January 2010 the wet areas of the wetland were planted with thousands of wetland plants, and in July of the same year (with the help of volunteers) further plantings of native trees and other plants began - to date, over 60,000 plants have been planted and there are still many areas to do.

With help received from New Zealand and Whangārei Businesses, the sanctuary now also has an environmental education centre. This space has been used by many groups - including children, differently abled groups and adult education classes. The hands-on approach works well and the centre has received many positive comments.

The sanctuary also partnered with Onerahi Primary School students in 2024, designing a 1.8km cross country racecourse at the sanctuary. The project culminated in cross country race days, which has resulted in many middle school students and their

whānau having a fun-filled day out at the springs.

Currently, Northland Forest & Bird are in the process of creating a Dragonfly Springs Wetland Sanctuary Incorporated Society and Trust as a legal entity for Jeremy to gift the sanctuary to.

Dragonfly Springs Wetland Sanctuary is seeking volunteers to do mahi at the springs, not only in return for the benefits local tamariki have got from their visits, but also to experience the environmental health and healing benefits the sanctuary gives to all visitors.

Not only are more gardening volunteers needed, but also carpenters to fit out the Education Centre, and fit and able people to dig drains, build retaining walls, develop the Parkour area for our kids, and so on.

**Please get in touch if you are keen to help in any way.**

Information contributed by Jeremy Busck

Dragonfly Springs Wetland Sanctuary, 47 Raumati Crescent, Onerahi

Mobile 021 232 6525, www.dragonflysprings.co.nz, follow us on Facebook



**Whangarei Airport**

**Daily Air Services around New Zealand and the world with Air New Zealand and Sunair**

Other Services Provided: • Flight Training • Aircraft Maintenance • Helicopter Hire • Secure Carparking • Rental Cars

www.whangareiairport.co.nz • Skyline Café Open 7 days

**SKYLINE AIRPORT CAFE**  
FLY AND DINE

Monday to Friday: 5am to 5:30pm  
Saturday: 5:45am to 2:45pm  
Sunday: 5:45am to 5:30pm

**OPEN 7 DAYS A WEEK!!!**

Pop in to see us and have a coffee!

**KIWIKIDS**  
EARLY LEARNING CENTRE

"Providing for the healthy bodies and healthy minds of our kiwi kids"

PH 436 3085  
www.kiwikidselect.co.nz

4 Waimahanga Rd, Onerahi

# Wai A Ariki food forest report

**Our Wai A Ariki food forest and community gardens are all go - with weeding and mowing needed after the crazy weather we've had. We welcome any help, even if you would just like to pop by for a chat about what we are doing.**

The gardens are being methodically weeded, mulched and replanted. Sadly due to toxic spray damage and vandalism (which was heartbreaking), we are having to replace several of the fruit trees that did not recover from this senseless act. If you would like to donate a fruit tree to assist us in filling the gaps left by the trees that were poisoned, then that would be awesome.

if you would like to harvest some vegetables or fruit then please come on over - just remember "need not greed".

Contributed by Wendy Giffin - photos by Wendy Giffin



# Elaine's legacy

**The Orbit has recently learned that Elaine Winger, formerly from Mackesy Road in Onerahi and who denoted her piano to the Onerahi Community Hall, has sadly passed away.**

The story about the piano and its history was included in the April 2025 edition of the Orbit with permission from Brian Winger, Elaine's son. The piano is now regularly enjoyed by a variety of musicians (and budding musicians!) at the hall.

Since then, the story has inspired another person to get in touch with us about also donating their piano to a community facility - so Elaine was a trend setter, as her generosity has prompted another to be generous in turn.

In addition, we also received communication from an ex-concert pianist who asked to use Elaine's piano, as her piano is in storage - another example of the positive impact articles in the Orbit can have on building our community networks.

Brian Winger, Elaine's son, told us that everyone he has spoken to, who had seen the article, enjoyed it; and that he was "glad we were able to get the piano to you before this happened and she was able to see the article." Our heartfelt condolences are extended to Elaine's family and friends.



Heidyn Harrison, the Facilities Manager OCA, is loving having the piano in the hall. The direct phone number for booking enquiries is 022 085 8286 or email [onerahicomunity@gmail.com](mailto:onerahicomunity@gmail.com)



## Parua Bay Childcare

Nurturing childcare for babies to 6 years old

6 Lamb Road, Whangārei  
**Phone: 09 436 5544**

# ANZAC Day memories

**This year, for the first time, Onerahi Community Association held an ANZAC Day Commemoration service; honouring past and present service members and those who have died during active service for New Zealand. The commemoration service was held at the Onerahi Community Hall on Friday 25th April, starting at 11am.**

Approximately 30 people attended. Grant Harrison, the AOCA President, started proceedings with a karakia. Wendy Giffin was tasked with being the MC for the occasion. With three of her grandchildren, she laid a wreath on behalf of the Onerahi Community Association. Wreaths were also laid by Jodie Rameka on behalf of the Whangārei RSA, Brian Powell on behalf of the Fire Service and Search and Rescue, and Jacob Mateucci on behalf of the RNZAF (as a serving member of the RNZAF). Ian Guthrie read the ode 'Abide with me' and the national anthem was sung. Photos of two plaques were displayed, one located at the primary school and the other located at Oak Grove along Church Street, behind the airport.

Grant then closed the ceremony with a karakia. Morning tea followed, with people mingling and sharing memories.

For Wendy, researching the names on the two Onerahi memorials was very emotional. "Some families never had closure, as their sons were presumed killed in action, or perished in prisoner of war camps of disease. For some, their loved ones are buried far over the seas in Turkey or France."

After the service, the wreaths were taken to Oak Grove and Onerahi Cemetery. The history of the Onerahi Oak Grove may not be known to some Orbit readers. In 1921 the Whangārei Beautifying Society planted an oak tree in



memory of each of the soldiers from Onerahi who had died during the First World War. The trees were saved from being cut down in the 1990s, when a memorial was placed at the site to remind future generations about their importance. The memorial is a granite slab with 10 names inscribed: Bertram Beighton McKenzie, Charles Frederick Dickson, Herbert Arthur Going, Harold John Edwards, James Lupton, George



Wendy's grandson Hunter stands between Brian Powell and Chris Venmore. Hunter is wearing his great-grandfather Spencer Giffin's B.E.M WW2 medals.

Windram, Peter Webb Pullman, Walter Touho Spratt, C. Heard.

Others commemorated from WWII were John Seymour Handy Commins, Charles Lilburn Handy Commins, Donald Charles Tooth, David Handforth Hawkes, Leon Edward Rowlands and Bruce Graham Mc Beath.

OCA envision having an annual ANZAC Day commemoration.

**Lest we forget.**

Contributed by Wendy Giffin (OCA Committee member and Master of Ceremonies) and Rose Tantau (OCA Treasurer and the official photographer for the occasion).



Rita Gregory - Rita has lived for 64 years in Onerahi, and her parents and siblings are all buried at the Onerahi Cemetery. She has family information from her grandfather's time serving in Egypt, her parents (who were in the New Zealand Army) and her late brother - a Returned Serviceman. The Orbit hopes to provide readers with more information on this story in our next edition.

**Wendy Giffin is interested in producing a booklet for the library about our Onerahi veterans. and wondered if any descendants or families would care to share any information, stories, photos or memorabilia to help make this happen. Contact her on [wagzrag@hotmail.com](mailto:wagzrag@hotmail.com)**

**When things don't go well!**  
We are here to care ... offering ...

- 🐾 Accident and emergency care
- 🐾 Health checks and vaccinations
- 🐾 Trained veterinary nurses
- 🐾 Open 7 days
- 🐾 24 hour emergency care



**PET CENTRES**  
PH 470 1060

Whangārei – 16-18 Maunu Road  
Hikurangi – Cnr George & Park Sts  
Onerahi – 165 Onerahi Road



**Like us on Facebook** [www.northvets.co.nz](http://www.northvets.co.nz)

## TV AERIAL SERVICES

NORTHLANDS AERIAL SPECIALIST

### FREEVIEW

SALES • SERVICE • INSTALLATION

**UHF Aerial & Satellite • Freeview TV**

- Domestic & Commercial • Radio/FM
- Campervan / Caravan Installs

Two Year Guarantee

**Over 30 Years Servicing Whangārei**

**MACK WILKINSON**

**436 0508**

M: 021 992 974

W: [www.tvas.co.nz](http://www.tvas.co.nz)

E: [mack@tvas.co.nz](mailto:mack@tvas.co.nz)



## Matariki Festival is ON!

**Ko Puanga te whetū i ārahi i ā Matariki ki te Tau Hou (Puanga is the star that guides Matariki to the New Year).**

Whangārei is once again hosting a month-long Puanga Matariki festival which ends on 24 Hune (June). The festival is a special series of cultural events for people to come together and celebrate the Māori New Year, Te Tau Hou Māori. This was traditionally the time to plant trees, prepare the lands for crop growing and renew links with whānau and friends. It's also a time to remember, reflect and honour loved ones who have died since the constellation's last rising; and to plan for the year ahead.

If you want to know more about all the Festival events, then have a look at the Council's website [www.wdc.govt.nz/Events/Festivals/Puanga-Matariki-Festival](http://www.wdc.govt.nz/Events/Festivals/Puanga-Matariki-Festival). Some of the most interesting celebrations for us this year included:

### 1. E Tū Ngahere – Puanga Exhibition

Saturday 31 May 2025, 10am to Tuesday 24 June 2025, 4pm at the Hihiaua Cultural Centre, 56-58 Herekino Street, Whangārei (closed on Mondays).

This exhibition is a curated collection of local and Māori artworks focused on the theme 'E Tū Ngahere'. E tū ana te

ngahere i runga i te mana o te kōtahitanga (In the forest, trees interlock their roots beneath the soil, creating a resilient network that can withstand strong weather). When we strengthen our whānaungatanga, these connections become our foundation, allowing us to stand tall, unwavering and determined against life's challenges. The forest teaches us that true resilience comes not from standing alone, but from standing together. This is a free exhibition, koha appreciated.

### 2. Building Bridges Between Puanga Matariki and Astronomy

Saturday 7, 14, 20 and 21 June 2025, 7-9pm, Planetarium North, 500 State Highway 14, Maunu, Whangārei.

Join us for a tour of the night sky and see where Puanga Matariki rises in late June as dawn breaks. Humans have observed the Matariki cluster of stars from all around the world, and there are stories about this unique cluster in many cultures. Astronomers have also studied them and have discovered many facts about this nearby celestial wonder that we can use to build a bridge from our ancestors to ourselves and beyond. Adults \$15, Students \$10. Bookings essential.

### 3. Light the Way for Hato Hone St John Whangārei

Tuesday 24 June 2025, gather at 5pm, walk at 6 to 6:30pm, Canopy Bridge, Town Basin, Whangārei.

This is a community event dedicated to bringing people together in support of St John - New Zealand's frontline of medical response - providing ambulance services, first aid training, event medical services, AEDs (defibrillators), first aid kits, medical alarms and more. This event aims to promote awareness, engagement and fundraising while creating a fun, family-friendly atmosphere. We encourage participants to wear anything that glows - fluorescent clothing, glow-in-the-dark accessories or LED items. A free event, koha appreciated.

## SPONSORED CONTENT

# North Travel: Onerahi's local travel experts for exceptional experiences

**Have you ever stood at the edge of something new and thought, "Why not now?"**

Whether it's tracking the Big Five on the Serengeti, sipping wine under the midnight sun in Norway, or simply reconnecting with loved ones in a special place, the world is calling — and North Travel is here to help you answer.

Proudly based in a home office right here in Onerahi, North Travel is 100% Northland-owned and operated. We're your neighbours, and we believe that travel should be more than just a holiday — it should be an experience that stays with you for life.

Led by Jared Jamison, Owner and Operator, North Travel is dedicated to curating journeys that reflect your unique passions and personality. "We don't do one-size-fits-all," says Jared. "We work alongside you to craft meaningful, unforgettable adventures — the kind that feed the soul." From walking the hidden trails of Spain's Camino, to liveaboard scuba diving in Raja Ampat, to a luxury river expedition through the Amazon, North Travel is redefining what's possible.

And our commitment to exceptional service hasn't gone unnoticed — North Travel has just been named a finalist in the upcoming National Travel Industry Awards (NTIA), placing us in the top three travel brokerages in New Zealand. It's the first time a Northland-based travel business has ever been recognised at these prestigious national awards, and we couldn't be prouder to represent our region on the national stage.

### Our tight-knit team brings decades of expertise:

**Debbie Christian, Cruise and Beach Holiday Specialist**, is one of Australasia's top cruise advisors — recently named a CLIA Top 5 Broker Finalist Australasia. Debbie's deep knowledge and personal care ensures every ocean or island journey is exceptional.

**Heather Bint, Premium Touring and Escorted Travel Expert**, helps clients discover the world in comfort and style through bespoke luxury itineraries and meticulously planned guided tours.

**Jashley Buenviaje, our Senior Airfare and Admin Specialist**, is the behind-the-scenes expert who ensures every flight, visa, and detail runs like clockwork — so you can travel with ease.

**Whether you're planning your next bucket list adventure or a relaxed Pacific escape, we offer:**

- Wildlife & Adventure Travel
- Cruises & Expedition Voyages
- Family & Multi-Generational Holidays
- Flights, Transfers, Trains & Tours
- Travel Insurance & Visa Assistance



Lioness looking back to her cubs in the Serengeti

And every booking comes with 24/7 emergency support, client funds are protected through TAANZ Financial Bonding and IATA Accreditation - because true peace of mind is at the heart of North Travel's commitment.

We're proud to live and work in Whangārei and even prouder to help our fellow Northlanders see the world on their terms — with personalised, thoughtful service every step of the way.

**Let's plan something remarkable together,**

**Jared Jamison**

**0800 803 007 • [hello@northtravel.co.nz](mailto:hello@northtravel.co.nz)**



Midnight wild camping in the Lofoten islands, Norway

**For those precious little ones, stillborn and up to 2 years old**

- Newberrys Funeral Home Professional Service Fee - **No Charge**
- Caskets for children, stillborn up to 2 years old Burial only - **No Charge**
- Children's Burial Plot, stillborn up to 2 years old - **No Charge**
- Children's Burial plot digging fee, stillborn up to 2 years old - **No Charge**

**THANK YOU TO EVERYONE WHO MADE THIS POSSIBLE**

**NEWBERRYS FUNERAL HOME**

Ph. 438 2644 (24 Hours)  
Corner of Kamo Rd & Moody Ave, Kamo  
[admin@newberrys.co.nz](mailto:admin@newberrys.co.nz)  
[www.newberrys.co.nz](http://www.newberrys.co.nz)

- » Business Cards
- » Flyers
- » Posters
- » Vinyl Labels
- » Books
- » Magazines
- » Letterheads
- » Folders
- » Invoice Books
- » Calendars
- » Pads
- » Rack Cards

**AND MUCH MORE!**

**ALL WORK GUARANTEED**

**0800 141 402** [f/jopprint](https://www.facebook.com/jopprint)  
[info@jop.co.nz](mailto:info@jop.co.nz) • [www.jop.co.nz](http://www.jop.co.nz)

design | print | distribution

**NORTH TRAVEL**  
Experience Exceptional

**Dreaming of ESCAPE?**  
Tailored Holidays, Designed Locally.

From cultural escapes and wildlife encounters to cruises, family holidays, and more — North Travel brings the world to you. Locally owned, globally connected, and ready to make your next holiday exceptional.

**Our Expertise Includes:**

- ✓ Tailored Itineraries
- ✓ Cruise & Rail Holidays
- ✓ Family & Group Getaways
- ✓ Flights, Insurance & Visa Assistance

**Contact Us:**

**0800 803 007**  
[hello@northtravel.co.nz](mailto:hello@northtravel.co.nz)



# Onerahi School report



**Kia ora koutou,**  
**As I write this the torrential rain that blanketed the holidays looks to have moved on. With blue skies sitting overhead we wanted to share two special learning opportunities that our tamariki have access to at school.**

One involves connecting with our environment and learning how to work with it to produce life sustaining resources. The other is focused on understanding the technological process and how we can use technology to help us solve problems. Both have the added benefit of being hugely engaging and enjoyable experiences for our tamariki.

Garden to Table (GTT) is an initiative where the learning focus is in the title. During a GTT session students spend their time in one of two places: the garden or the kitchen. While in the garden they learn about how to identify plants, grow and care for them, and understand how each one can impact both our health and the health of the environment. This is very hands-on and sees all sorts of projects taking place in and around our Butterfly Garden.



In the kitchen children learn to prepare the food harvested from the gardens. They develop all those rich skills that make someone a great chef and maintain a growing recipe book that leads to meals being cooked at home. At the end of each session both groups, kitchen and garden, come together to eat what was cooked. It is a time to reflect on the skills developed and to celebrate how



everyone working together led to something everyone could enjoy. We would like to acknowledge Gabrielle and Mary for their mahi in running this valuable initiative.

Those are but two initiatives out of the many our kura runs to ensure our tamariki have a broad and valuable education. In classic Northland fashion, in the time it has taken me to write this the rain has managed to return. While the future of our tamariki and kura are bright, it appears the weather is less reliable. Take care.

*Ngā manaakitanga,*  
 Danny Hamilton - Tumuaki Tuarua / Deputy Principal

## Onerahi Beach cleanup was a clean success!

**On 13 April Volunteering Northland's Whangārei Youth Action Group got busy at our waterfront, with about 20 volunteers collecting 45kg of rubbish in the area from the Onerahi Yacht Club all the way to the small jetty below the roundabout.**

Thanks to Fred Tito for opening our event, and to all volunteers who braved the squally weather. Thank you also to everyone behind the scenes who contributed or worked to make this happen.



# MAYOR'S MESSAGE



## Upcoming local elections

**As your Mayor, I am excited to announce that our local elections are just around the corner. This is such an important time for our community, as we all have the opportunity to shape the future of Whangārei by electing representatives who will make important decisions on our behalf.**



It's also important to understand that Whangārei is using a new voting system, 'Single Transferrable Vote' (also known as STV), and to be aware of the key dates and phases of the elections process.

### Single Transferable Voting (STV)

This year, Whangārei District is using the Single Transferable Voting (STV) system. STV allows voters to rank candidates in order of preference. This system is designed to allow as many votes as possible to be used with the election of candidates.

How does STV work? When you get your voting papers, you will see a list of candidates. Instead of voting by ticking a box for the candidate you want, you will need to rank them in order of preference (1, 2, 3, etc.). It's important for you to know that you can rank as many or as few candidates as you like, just make sure you number in sequence.

When the votes are counted, if a candidate reaches the quota (which is based on the number of votes and seats available), they are elected. If not, the candidate with the fewest votes is eliminated, and their votes are transferred to the voters' next preferences. This process continues until all seats are filled.

The STV system is designed so that your vote can still make a difference even if your top choice doesn't win, as

your vote can be transferred to your next preferred candidate.

Before you can vote in the local elections, you need to ensure that you are enrolled to vote. Please take a moment to check your enrolment status by visiting [www.vote.nz](http://www.vote.nz).

**Remember - every vote counts!**

**Here are the key dates when dealing with the upcoming local body elections.**

### Stand for Council:

The nominations period runs from 4 July - 1 August

### Voting papers sent out:

From 9 September - 22 September.

If you haven't received your voting papers by the 22 September, you'll need to come in to Council and conduct a special vote

### Voting Period:

9 September - midday  
 11 October

### Results Announced:

17-18  
 October,  
 2025



## ONERAHI FISH SHOP

**OPEN 6 DAYS A WEEK  
 MON to SAT 11.30am - 9pm**

**09 436 0958**

**112 Onerahi Road  
 Onerahi Shopping Centre  
 (Next to Pepe's)**

**Chinese food  
 Drinks  
 Milkshakes  
 Take-aways**

## Onerahi Pharmacy

116 Onerahi Road  
 Phone: 09 436 0567

Find us on Facebook



**Unichem**  
 Your local health professional

## LIVING LOCAL & LOVING Whangārei

**Tracy Dawson**

022 468 2765 | [tracy.dawson@harcourts.co.nz](mailto:tracy.dawson@harcourts.co.nz)

**Harcourts Whangārei**

Optimize Realty Ltd Licensed Agent REAA 2008



# MP for Whangārei - Hon Dr Shane Reti



## ANZAC Day: A Time for Reflection and Remembrance in Whangārei

Each year on April 25th, we gather as a community in Whangārei to honour the brave men and women who served in the Australian and New Zealand Army Corps (ANZAC). ANZAC Day is a time of deep reflection, gratitude, and remembrance—a moment to acknowledge the sacrifices made in World War I and the many conflicts that

followed. As someone who has served in the New Zealand Army, this day holds a special significance for me, and I am always humbled to stand alongside our veterans, families, and young people as we pay tribute to those who gave so much.

The day begins before dawn, with a solemn service at the Whangārei cenotaph. In the quiet morning light, our community comes together—veterans, whānau, schoolchildren, and residents of all ages—to remember and reflect. The haunting notes of the Last Post, the moment of silence, and the laying of wreaths create a powerful atmosphere of respect and remembrance. I am honoured to participate in this tradition, laying a wreath on behalf of our community, acknowledging not only those who served but also their families, who have carried the weight of sacrifice through generations.

Whangārei has a strong connection to our military history. Many local families have ancestors who served, and ANZAC Day provides an opportunity to reflect on their stories and share them with younger generations. I am always

heartened to see local schools playing an active role in these commemorations, ensuring that the values of service, courage, and sacrifice are passed down. The tradition of wearing family war medals at the service is a particularly moving way for people to honour their loved ones and keep their memories alive.

Later in the morning, the Whangārei ANZAC Day parade marches through the city, bringing together veterans, serving personnel, and community groups. It is always inspiring to see the turnout - young and old, marching side by side in a show of unity and respect. This act of remembrance is a powerful reminder that the legacy of the ANZACs is not just a chapter in our history books but a living part of our identity.

As we stand together on ANZAC Day, we reaffirm our commitment to honouring those who served and ensuring that their sacrifices are never forgotten. It is a privilege to take part in this day of remembrance; in paying tribute to our ANZACs, I've also had the honour of sharing Anzac Day Services with the residents of Jane Mander Retirement Village and the fine young men of Whangārei Boys High School. **Lest we forget.**



**HON DR SHANE RETI** QSM  
MP for Whangārei

# Working together

P | 09 438 9952  
A | 105 Cameron Street, Whangārei  
E | shane.reti@parliament.govt.nz  
W | shaneretinational.org.nz

**FLAMES**  
RESTAURANT, BAR & CAFE

OPEN DAILY  
WE'D LOVE TO SEE YOU

BREAKFAST/LUNCH MON- FRI 7AM- 2PM  
SAT/SUN 7.30AM- 2PM  
DINNER 5.30-8.30PM

DELICIOUS COFFEE • COLD DRINKS • COOKED BREAKFASTS  
HOT FOOD • LOCAL INGREDIENTS • SEASONAL MENUS

8 WAVERLEY STREET, ONERAHI, WHANGAREI, 0110  
PH: 09 436 1539 - FIND US ON  
CLOSED PUBLIC HOLIDAYS

# Building confidence through support Unlock your child's potential through expert maths and english tuition



**For over 40 years, NumberWorks'nWords has been helping kids of all abilities feel confident and thrive with expert maths and English tuition. Whether your child needs a boost to catch up or wants to tackle more advanced work, we've got them covered.**

NumberWorks'nWords shows that learning can be fun and rewarding. We create a supportive environment where kids can grow a love for learning. Progress is celebrated with constant feedback and achievement certificates, helping children rebuild their confidence and feel proud of their success.



**Essential Skills**  
Let's face it—maths and English are essential skills for academic success, but not every child finds them easy. In a classroom of 30, it's all too easy for kids to fall behind or not be challenged enough when they're ready to excel. That's where NumberWorks'nWords comes in.  
If you're worried your child is struggling or just want to see them reach their full potential, why not book a free, no-obligation assessment? Discover how NumberWorks'nWords can help your child thrive.

**Assessments**  
Every child starts with a unique assessment to pinpoint their strengths and identify areas where they need help. From there, Manager Adele works closely with parents to create a learning plan focused on closing gaps or extending knowledge.

**Individual Teaching**  
Children receive individual teaching from tutors who explain new concepts in a way they can understand. Students then lock in their learning with fun, interactive computer-based exercises. This combo of individual teaching and independent practice builds confident, capable learners.

**H2O PLUMBING SOLUTIONS**

- New builds • Leak repairs • Hot water upgrades
- Maintenance • Bathroom /kitchen renovations
- Commercial plumbing

**H2O PLUMBING SOLUTIONS**

For all your plumbing needs  
contact Brook today  
Email: admin@h2ops.co.nz

**09 302 2282 www.h2ops.co.nz**

New Entrant to Year 11

**Your children are amazing already.  
We just help them prove it.**

**ENGLISH & MATHS**  
Free assessment  
Book now!

Whangarei Ph 438 1144  
email whangarei@numberworks.com  
numberworksnwords.com/nz

NumberWorks'nWords | **40** YEARS TUTORING

# Condolences



**Our condolences go to the family and loved ones of Kevin Barry who died following a freak workplace incident on 15 April, in Onerahi.**

Kevin was a well known and long-serving safety crew member at Western Springs Speedway. Known for his dedication and generosity, Kevin played a crucial role in ensuring driver and spectator safety for decades. Friends

and colleagues honour him as a straight-up, kind-hearted individual.

Many people in our community were affected by the event, and the Orbit community acknowledges your collective pain. Police have confirmed that WorkSafe has been advised.

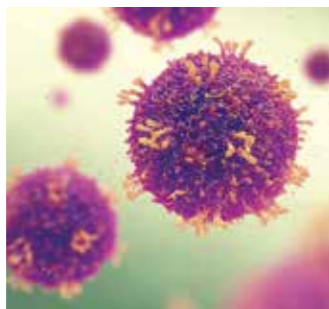
A Givealittle page has been set up to help cover funeral expenses and support his loved ones during this difficult time. The page reads: "Kevin was a kind, hardworking soul who brought light and laughter to everyone who knew him."

<https://givealittle.co.nz/cause/help-the-barry-family-through-heartbreak>

# Measles outbreak

**Recently there has been an outbreak of measles in Auckland.**

Symptoms of measles include fever, coughing, runny nose, sore red eyes and conjunctivitis, while people with measles can also sometimes get a rash that starts on the face and gradually spreads down the body to the arms and legs, lasting up to a week, said Health NZ.



Measles is nine times more infectious than Covid-19. File photo. Photo: AFP / nobeastsofierce / Science Photo Library

Measles can have long-term complications affecting the immune system and brain, including immune amnesia and subacute sclerosing panencephalitis (SSPE). SSPE is a rare but fatal brain disease that can develop years after an initial measles infection. Additionally, measles can disrupt immune memory, making individuals more susceptible to other infections for months or even years.

Please urgently check your family's vaccination status.

# PEPE'S DAIRY

ONERAHI SHOPPING CENTRE

110a Onerahi Road, Whangarei

**Service with a Smile!**

Mon-Fri: 7am - 8pm **OPEN 7 DAYS** Sat-Sun & Public Holidays: 8am-8pm

## 09 436 3600

# "Have you tried turning it off and back on again?"

**I'm sure you have heard this statement from more than one person over your lifetime, and it is a common response when calling your IT person. Why is this statement said so much?**

From time to time, your electronic devices need a rest. Why a rest you ask, they don't do any heavy lifting?

1. Our electronic devices do updates (some without you knowing) and need to be restarted to apply those updates.
2. Our electronic devices do not like getting hot and turning them off gives them a chance to cool down.
3. Our electronic devices get affected by the regular power fluctuations around Northland, and those fluctuations require our electronic devices to be restarted to come right again.

There are other reasons, yet these are the basic three.

While many may feel this only applies to your laptops and computers, "turning the device off and on again" also applies to TV's, Modems, DVD players, tablets and phones, and strangely enough relates to us humans as well (in a figurative view, as we all need to take a breather from our electronic devices from time to time).

In the past I have mentioned the issues that some of our electronic devices have with heat and overheating, as from time to time I have had to fix these issues and found that the main reason for overheating has been excess dust on electronic parts. If you do have the ability when you turn your devices off, please give the electronic device a bit of a clean, when it is resting.

Most importantly, if you are still having issues with your electronic devices, give your friendly IT person a call, we are all here to help.

**Vince Cocurullo**  
Northland's Fix-it man

IT • COMMUNITY PROJECTS • LOCAL ISSUES

- COMPUTER FAILURE
- REMOTE ACCESS
- EMAIL TROUBLE
- NETWORKING

**OR JUST SOME FRIENDLY ADVICE**

📞 09 4388 834  
✉ vince@cocurullo.co.nz  
🌐 www.cocurullo.co.nz

📱 **fix it man**

# Change is coming to our water services

**The Coalition Government's 'Local Water Done Well' legislative changes establish a new regulatory framework for water services delivery, which the Whangārei District Council has to respond to by September this year. It establishes an economic regulation regime for water supply and wastewater services, with the potential to include stormwater services at a later date.**

## Service delivery options

Councils have to choose their optimal delivery structure and their delivery arrangements for their water services. These include a range of options; including continuing to provide water services, transferring the responsibility for providing water services to an independent 'water organisation', joining up with others, or contracting with another party to provide the services.

## New powers for 'water organisations'

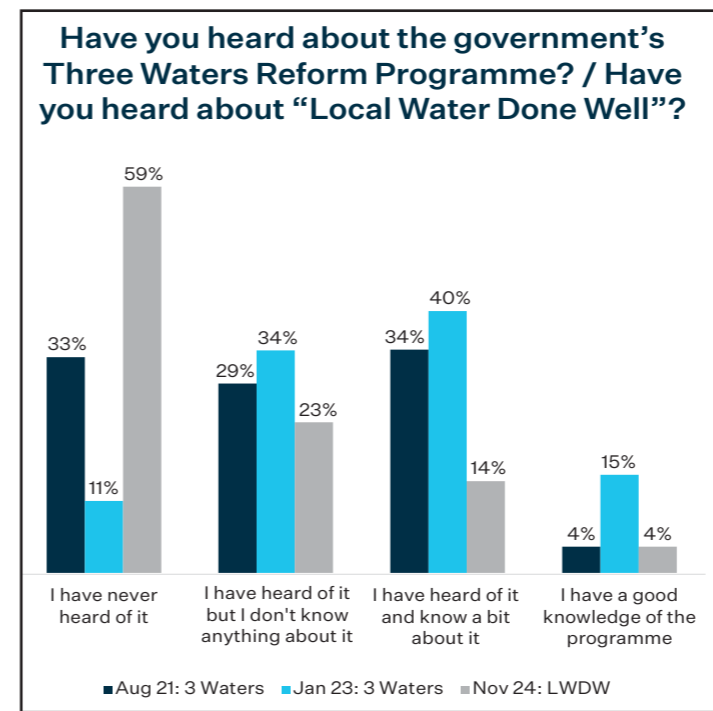
Water organisations will have a range of powers similar to those currently held by local authorities. Central government ministerial powers to act in relation to local authorities has also been extended to apply to all water service providers and shareholders of water organisations.

## Economic regulation and consumer protection

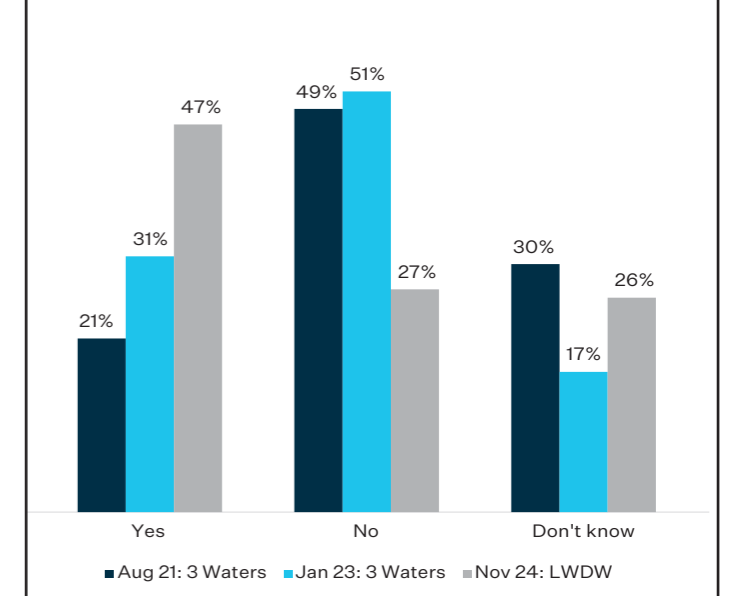
Consumer protection for water related services, introduced through amendments to the Commerce Act 1986, include a range of regulatory tools such as information disclosure requirements, revenue threshold regulation, quality regulation, performance requirement regulation, and price-quality regulation. This regulation will apply to the water service suppliers who are responsible for making core decisions about capital and operating expenditure, revenue recovery, and charging levels.

## Public sentiment

A public survey carried out by Truwind on Local Water Done Well in late 2024 found that public opposition to the legislation focuses on the perceived unnecessary increase in the cost of bureaucracy (through the establishment of yet



**At this stage, do you think that the proposed reforms will benefit your local area?**



more government run entities), and the risk this bureaucratic spend poses to the spend needed for 'pipes in the ground'.

## Discussion

Overall, the Local Water Done Well programme retains council ownership and control of water services, as well as the ultimate responsibility for delivery. Whangārei District Council believes they have managed our water services in Whangārei comparatively well, and council staff are currently fleshing out the Water Services Delivery Plan (required by central government by early September 2025).

The delivery options being considered by council may include retaining an in-house business unit with some adjustments, creating a single council-owned water organisation, or creating a multi-owned water organisation with our Northland neighbours. In addition, the plan must demonstrate the council's commitment to deliver water services in a way that ensures that:

- all relevant regulatory quality standards for water services will be met
- the service will be financially sustainable
- all drinking water quality standards will be met
- planned housing growth and urban development will be met

Based on information from Dentons Kensington Swan, Truwind and Whangārei District Council

• REAL ESTATE • DECEASED ESTATES  
• END OF TENANCY • NEW BUILDS  
• DOWNSIZING & RELOCATION

**MARKET READY**

021 517 881  
marketready2024@gmail.com

**LET'S GET MARKET READY!**

- House Washing
- Water Blasting
- Garden Clean-ups
- Rubbish Removal
- Interior Cleaning
- Carpet Cleaning
- Green Waste Removal
- Lawns
- Lawns & Garden Maintenance



## At home in Onerahi

**Silke Hendel has a very clear aim in mind when she raises her paint brush. She wants to make the world a brighter and happier place, and the way she wants to do that is through sharing both the visual pleasure of experiencing her work and eventually the sharing of any financial rewards it brings.**

Silke is no novice to the creative experience. Her parents Adriana and Chris are well known for their stunning silver and glass jewellery. The family have lived in Onerahi since the early 70's but Silke moved south, to Wellington, to undertake a degree in Visual Communications and Design and remained there to work for a number of years. Now, she has returned home to be with her family and to pursue a lifelong ambition of being a full time painter. She enthuses about her return to Onerahi. After a corporate working life in Wellington the slower pace and relaxed atmosphere in Onerahi fills her with joy and enthusiasm. She feels she has 'come home' emotionally as well as geographically. She can't see a time when she will want to leave the area again.

Part of Silke's mission is not only to share her work with others but to help them create their own works and to grow their creative confidence. Her website, 'Heart for Art' offers a range of painting tutorials and painting experience that helps the new painter achieve an outcome they can be proud of. Her advice for budding painters, "Let go of perfectionism. Don't be scared to make mistakes." Her website also offers

advice on what the new artist needs to get started without breaking the bank. She wants painting to be accessible to everyone.

Silke's parents have been a regular feature in Whangārei Heads Arts Trail for many years but 2025 is the first year Silke has joined them to exhibit her own work at their studio. 'It is just so amazing to be working in a studio with your Mum and Dad working along side you. It is a very special experience.'

If you would like to see more of Silke's work or talk to her about tuition or commissions you can contact her by email on [silkehendel@gmail.com](mailto:silkehendel@gmail.com), ph 0212435004, [www.heartforart.co.nz/](http://www.heartforart.co.nz/) (tuition) or [www.silkehendelart.com](http://www.silkehendelart.com)

**Are you a creative in the Onerahi/Parua Bay area and would like to be profiled in the Orbit? Contact Sheila at [heartshands@gmail.com](mailto:heartshands@gmail.com)**



**a graceful undertaking**  
THE FREEDOM TO DO IT YOUR WAY

*A fresh approach to after-death care and funeral arranging*

Contemporary and natural solutions, offering choice, facilitating creative, personalised family led funerals that truly reflect the uniqueness of every life.

Phone 09 988 9503 | 7 Dickson Road, Whangārei  
[info@graceful.co.nz](mailto:info@graceful.co.nz) | [www.graceful.co.nz](http://www.graceful.co.nz)

*Proud to be independent and locally owned*

**BLINDS, SHUTTERS & CURTAINS**  
Whangārei, Bream Bay & Districts

Rollers, Verticals, Venetians, Curtains, Shutters, Outdoor Blinds

Ph Gail 0211 95 35 35

[www.blindsandshutters.co.nz](http://www.blindsandshutters.co.nz)

## Volunteer of the year - Mike Peacock

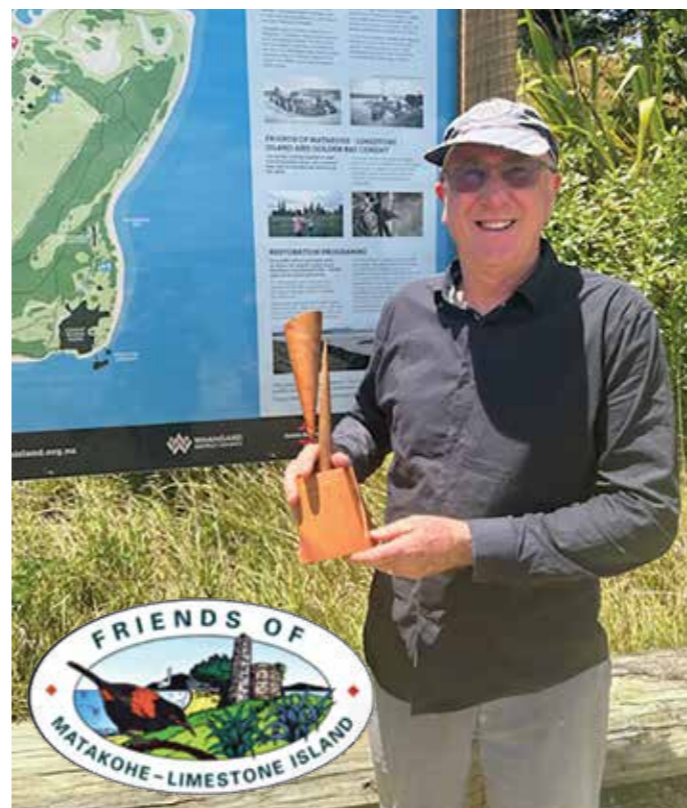
**Our volunteer of the year at Matakohē Limestone Island for 2024 is Mike Peacock.**

"I first started coming along to volunteer days about 15 years ago, but have increased attendance in the last 5 years since retirement. I really look forward to my visits to the island.

I like to catch up with what is happening on the island and help out with the different tasks. We can choose from a list the ranger prepares for the day. We have a wide variety of tasks which can differ each month. Some of them are track and drain maintenance; bait line maintenance and baiting traps; petrel nesting box repairs; weeding; removing moth plant; preparing stoat bait; sign maintenance; and rubbish collection. We regularly have a dozen or so helpers each month who come when they can. We always try to tick off a few jobs to help our island rangers."

Volunteer day is the first Wednesday of the month - meet at 9am at the Onerahi wharf. Feel free to contact the ranger for more information. [limestoneangers@gmail.com](mailto:limestoneangers@gmail.com)

Thanks,  
Bevan Morgan and Courtney Smuts-Kennedy,  
Island Rangers, Matakohē/Limestone Island



## Join us for Community Planting Day

**Join the Bream Head/Te Whara Conservation Trust for a Community Planting Day at Home Bay. Bring your whānau and friends to be part of a local effort to restore native biodiversity by helping plant 2,500 plants.**

This is a great opportunity to connect with others in the community and support conservation in our beautiful region. The event will take place on Sunday, 15th of June, from 9:00 am to 12:00 noon. In case of rain, please check our Facebook page or website for updates, or email us at [info@breamheadtrust.nz](mailto:info@breamheadtrust.nz) for more information.

We'll meet at 8:45 am at the Urquhart Bay car park for a quick briefing before heading to Home Bay along the track past the gun emplacement. Please come prepared with warm clothing, sturdy footwear or gumboots, a raincoat, water, and a spade if you have one. Hot drinks and kai will be provided to keep you fueled throughout the morning. We look forward to seeing you there and getting our hands dirty for a great cause!

Bream Head/Te Whara CONSERVATION TRUST

**Community planting day 2025**

June 15 • Home Bay • From 8:45am - 12pm

2003 2024

**Can you imagine a Predator Free Onerahi?**

Tiakina Whangārei can support you in removing pest plants and animals from your backyard and urban community spaces. Get in touch to find out how you can be part of the change.

E: [info@Tiakinawhangarei.co.nz](mailto:info@Tiakinawhangarei.co.nz)

Northland REGIONAL COUNCIL Proudly supported by Te Kaunihera ā rohe o Te Taitokerau

**Tiakina** WHANGĀREI

# 'Out of the Ocean, into the Fire'

## A geological tour of Northland by Libby & Peter Urbahn - Part 4



The Cape (Te Rerenga Wairua)



As we headed north from Ahipara, the breathtaking expanse of 90 Mile Beach unfolded before us. The Apourei Peninsula, merely 10km wide and 95km long, stretched northwards. The smooth bitumen road, a pleasant surprise from its former gravel surface, guided us through gently rolling dunes that had formed over the past 7,000 years. These dunes, now home to pastures and pine trees, held stories of the region's rich history including gum diggers.

Our journey to the northernmost accessible point of New Zealand took an hour and a half. Although we didn't have our



drone to capture the stunning scenery, we spotted several sand-locked lakes along the western edge of the ancient tombolo, the narrow strip of land, stretching from Ahipara to the Cape.

As we reached the northernmost tip of Aotearoa, the landscape transformed, becoming hilly with a dramatic headland overlooking turbulent currents and swirling waves. The area's history, shaped by wild volcanic activity millions of years ago, was evident. Although millennia of erosion has since reshaped the area, the Cape Reinga region remains the most geologically stable part of mainland New Zealand.

Standing at the tip, we marvelled at the interleaving of two oceans – the Tasman Sea and the Pacific Ocean. The strong ocean currents and dramatic wave patterns mesmerised us. In the distance, the Three Kings islands (Manawatāwhi) emerged from the sea mist, leaving us in awe of nature's wonders.

The Department of Conservation and the local iwi have excelled in creating a beautiful, culturally sensitive, and interesting area. Signboards and plantings guided us down the generous path to the famous lighthouse, built in 1941. The magnificent views of Spirit Bay (Kapawairua) and the lone Pohutakawa tree clinging to the cliffside left a lasting impression. According to Māori legend, this tree marks the final stepping-off point for spirits on their journey back to Hawaiki.

Visiting Cape Reinga should be on every New Zealander's and visitor's bucket list. The area's unique blend of natural beauty, geological past, rich history, and cultural significance makes it an unforgettable experience.



# Breaking the silence: Tackling loneliness in Onerahi

**Loneliness isn't merely an emotional state; it's a health concern that can be as detrimental as smoking 15 cigarettes a day\*, affecting both our physical health and mental well-being. This issue is particularly pressing among our elderly population, where up to 50% experience frequent or persistent loneliness\*.**

This alarming statistic highlights a hidden epidemic within our community, one that we have the power to address. By fostering social connections, we not only enhance individual lives but also fortify the fabric of our community, reducing the silent suffering of isolation among our neighbours.



Reaching out doesn't have to be a grand gesture; sometimes, the simplest actions can make the biggest impact.

A friendly hello, a phone call to an old friend, or inviting someone for a walk can break the cycle of loneliness. If you see someone who might be feeling isolated, consider reaching out. These small acts of kindness can reignite a sense of belonging

and connection, reminding each other that we're part of a community that cares.

One of the best ways to foster connection is by participating in local events. Onerahi offers a variety of activities where people can meet, share interests, and form meaningful relationships. The activities below and many more can be found on [thecommunity.co.nz](https://www.thecommunity.co.nz)

### Parua Bay Farmers and Crafters Market (Sunday)

A great way to start your week, this market is more than just a place to shop—it's a hub of community life. Stroll through the stalls and enjoy the friendly atmosphere.

### Visit the Flying Club (Sunday BBQ Lunch)

You don't need to be a pilot to join! If you have an interest in aviation or just enjoy meeting new people, stop by the Flying Club for their Sunday BBQ lunch at the airport.

### Onerahi Garden Club

Love gardening? The Onerahi Garden Club has a monthly meetup welcoming those who are passionate about plants, flowers, and growing their own food.

### Whangārei Cruising Club (Friday Nights from 4 PM)

If boating and the sea are more your style, why not drop by the Whangārei Cruising Club? Every Friday there is a gathering to eat great food, swap stories, and enjoy each other's company.

Every event is an open invitation to connect, to belong, and to thrive. So why not take that first step? Join in, reach out, and help make Onerahi a place where no one has to feel alone.

Contributed by James Macnee at <https://www.thecommunity.co.nz/>

\*University of Otago research - see [www.ageingwellchallenge.co.nz](http://www.ageingwellchallenge.co.nz)



## GRAEME JOHNSON

### JEWELS & TIME

*Clocks*

Finest Collection in Northland  
*Timeless, Classic & Modern*

*Watches*

Men's, Women's and Kid's  
*Time for all generations*

*Jewellery*

Rings, Pendants, Earrings  
& Bracelets  
*Timeless memories*

*Repairs*

Specialists in all watch, clock &  
Jewellery repairs and restoration

**435 2145**

531 Kamo Road, Kamo  
[www.graemejohnsonclocks.co.nz](http://www.graemejohnsonclocks.co.nz)



# YEAR 7/8

## 2026

# Enrolments

The Parua Bay School Board of Trustees invites Out of Zone Enrolment applications from parents/caregivers who wish to enrol their children at Year 7/8 for 2026

**We offer an extensive range of opportunities to our intermediate students**



Whanau Captains  
Sports Captains  
Music Rock Band  
Epro8 Club  
Coding Club  
Debating  
Camps  
Leadership Programme

Senior Ball  
Scuba  
Hiking  
Kayaking  
Snorkeling  
Sailing  
Surfing  
AIMS Games

To find out more about our intermediate programme contact: [kate.fortune@paruabay.school.nz](mailto:kate.fortune@paruabay.school.nz)

(09) 436 5814
[www.paruabay.school.nz](http://www.paruabay.school.nz)

# Faith for today

A sliver of comfort to face the unknown



## The Incomparable Christ



**Over 2,000 years ago a man was born contrary to the laws of nature. This man lived in obscurity and poverty. He did not travel extensively. Only once did he cross the border of the country in which he lived, that was when he was taken into exile in childhood. He possessed neither wealth nor influence. His life was very inconspicuous and he had no formal education.**

In infancy he startled a king, in his childhood he puzzled the priests and teachers in the temple with his intelligent questions and answers. In manhood he ruled the course of nature, he walked on the waves, as if on the pavement, and hushed the sea to sleep. He healed the multitudes without medicine and never made a charge for his services. He never wrote a book, but all the libraries near and far could not contain the books written about him. He never wrote a song, and yet he has furnished the theme for more songs than all the great song writers combined.

He never marshalled an army, nor drafted a soldier, nor fired a gun; and yet no leader ever had more rebels lay down their arms and surrender without a single shot fired. He never practised psychiatry, and yet he has healed more broken hearts than all the doctors near and far.

Each week the wheels of commerce and industry stop their turning as millions of followers make their way to worshipping assemblies to pay homage and respect to Him.

The names of past proud statesmen of Greece and Rome have come and gone. The names of past scientists, philosophers, theologians have come and gone; but the name of this man abounds more and more.

Though the spread of time is over 2,000 years between the scene of His crucifixion and the people of this generation, yet He still lives. Herod could not destroy Him, and the grave could not hold him. Angels worship Him, devils fear Him.

He is known as the living, personal Christ, our Lord Saviour. We are going to be forever with Him or forever without Him. "Believe in the Lord Jesus and you will be saved" John 4v6

Contributed by retired Onerahi Pastor Ron Brewer

# ONERAHI COMMUNITY CHURCH

Sundays 10am Raurimu Ave School Hall

... the name of Jesus ...  
there is no other name ...  
by which we must be saved.

Acts 4:10-12

Contact: hello.onecc@gmail.com

EMERGENCY NUMBERS	
Aviva	For free 24/7 support line, call 0800 AVIVA NOW (0800 28482 669)
Elder Abuse Helpline	0800 32 668 65 Open 24 hrs text: 5032, email: support@elderabuse.nz
Family violence info	0800 456 450
Gandhi Nivas	Supporting men to be free from violence 0800 426 344
Hey Bro helpline	Supporting men to be free from violence 0800 HeyBro (439 276)
Need to talk?	Free call or text: 1737 for mental health support from a trained counsellor
Oranga Tamariki line: for concerns about children and young people	0508 326 459, email: contact@ot.govt.nz1737
Safe to Talk sexual harm helpline	0800 044334, text: 4334, email: support@safetotalk.nz
Sensitive Claims ACC	0800 735 566
Shakti - for migrant and refugee women	0800 742 584 Open 24 hrs
Shine domestic abuse services	0508 744 633 Open 24 hrs Live webchat is also available
Rape Crisis	0800 88 33 00
Victim Support - support for men and women	0800 842 846 Open 24 hrs
Women's Refuge crisis line	0800 733 843 Open 24 hrs
Youthline	0800 376 633, free text: 234, email: talk@youthline.co.nz

Venues available for hire in Onerahi, Parua Bay and Whangārei Heads area		
Whangārei Cruising Club	Clare O'Donnell	wccinc@extra.co.nz   09 438 9043
Onerahi Community Hall & Community House	Heidyn Harrison	onerahicomunity@gmail.com   022 085 8286
Onerahi Bowling Club	Roger Kerr-Davis	027 390 7185
Onerahi Rugby Club	Fiona Raymond-Paieka	onerahirugby@yahoo.com. The Onerahi Rugby Club has had a recent facelift and renovation, and is available to other clubs and sports groups to use - please call us on 021 228 5982.
Onerahi Soccer Club	Fiona Ellis	onerahifootballclub@outlook.co.nz
Hope Church	Secretary	09 438 1667
Raurimu School Hall	School Office	09 436 0820 Ext. 2
St. Stephen's Church Hall	Paul Doherty	021 189 4797 or 09 436 0207
Tamaterau Hall	Jane Kippenberger	021 463 330
Parua Bay Community Centre	Kirsty	bjandkirsty@slingshot.co.nz
McLeod Bay Hall	Jos	027 315 6490
Taurikura Hall	Meg Mclsaac	09 434 0096
<b>Whangārei District Council Hotline: 0800 932 463</b>		
<b>Onerahi Police (09) 436 0222</b>		

# LOCAL NEWS

## More raw sewage in the harbour

Ritchie Rd residents at Parua Bay are concerned about their beach is being repeatedly contaminated with raw sewage and the district council's lack of action over fixing the recurrent sewerage overflow problem.

The regional council is considering enforcement action against the district council. Parua Bay resident Kevin White, a registered drain layer involved in installing the system at Whangārei Heads during the mid-2000s, said it was "very, very poorly designed" and was defective from the start. It was not designed for the massive influx of house building the council has since "encouraged" into the area. The system has repeatedly malfunctioned, causing overflows and odours that stink out the neighbourhood, especially near Parua Bay School.

White believes the overflows are because the main pipeline is too narrow. "The Bog Doctor truck and trailer is coming out here just about non-stop sucking out the pumping stations that aren't working, which must be at a huge yearly cost [to the ratepayers]," he said. In his view, the ideal remedy would be for WDC to create a treatment station at Whangārei Heads or replace the pipes with wider ones.

Based on a report by Sarah Curtis, a reporter for the Northern Advocate



Ritchie Road, Parua Bay - photo from Google Earth

## Parua Bay tsunami siren removed

A controversial tsunami siren in Parua Bay has been removed because it was installed ahead of schedule and before full community consultation. The siren at the waterfront in Parua Bay, off Kiteone Rd, was removed last year and is yet to be replaced. Residents had complained about the impact on their coastal views and raised concerns about the potential noise levels.

A new siren is expected to be completed before testing is due in September.

If there is a tsunami warning before the installation of the new siren, the old sirens would be used in conjunction with the new network.

Based on a report by Sarah Curtis, a reporter for the Northern Advocate

## Māori ward referendum

Council will hold a Māori Ward public referendum with the 2025 local government elections. The effect of this will be that the current wards and councillors will remain in place until the referendum in September/October this year. At the elections, Whangārei will still have a Māori Ward, with two Māori Ward councillors in place until at least 2028. If the public opt to retain the Māori Ward, they will remain in place until at least the 2031 elections. If the public opt to disestablish the ward, there will be no Māori Ward option in the elections in 2028 or 2031.

Based on Whangārei District Council website information

## Beach Road Playground upgraded

The Whangārei District Council has recently completely renewed the Beach Road playground with a full replacement of both the playground and swings.

All young humans in the area will be wanting to play at this new facility! The playground is located on the shores of the Whangārei Harbour, with public toilets and a boat ramp nearby. Though not fenced, there are barriers keeping kids from running onto the road while stairs on the opposite side lead down to the beach. At low tide, it's a great opportunity to go for a discovery walk along the beach and spot crabs, seashells and other items of interest.

**Call Douglas Roofing for your FREE, no obligation quote**

• New Roofs • Re-Roofs • Roof Repairs • Spouting

027 892 7770 • www.douglasroofing.co.nz  
Email: admin@douglasroofing.co.nz

Lawn Mowing by your Local Expert

- RESIDENTIAL MOWING
- COMMERCIAL MOWING
- HEDGES & PRUNING
- GARDENING / SPRAYING
- SECTION CLEAN-UPS
- RUBBISH REMOVAL
- GUTTER CLEANING
- ALL WORK GUARANTEED

**Phone 0800 454 654**  
BOOK ONLINE at www.jimsmowing.co.nz  
Fully Insured and Security Checked for your peace of mind

Akongia tētahi mea hou  
**Learn something new**

www.cew.ac.nz  
P: 027 428 5412  
09 435 0889

Angela Bilyard-Smith (N.Z.C.A.D.)  
ARCHITECTURAL DESIGNER  
NZCAD LBP  
Parua Bay Whangarei  
**RENOVATION + NEW BUILD**  
FROM BEGINNING TO COMPLETION  
021 211 1579  
smithbilyard@gmail.com

**Joy at the BAY**  
HAIR SALON

Mon 11am - 4pm  
Tue 9am - 5pm  
Wed 9am - 7pm  
Thurs 9am - 5pm  
Fri 9am - 6pm

1379 Whangārei Heads Rd. Parua Bay  
Call for an appointment or book online  
**www.joyatthebay.com**  
**Phone 436 5002**

Citizens Advice Bureau

**Not sure? Ask us.**

We provide free, confidential and independent information and advice to help you understand your rights and responsibilities.

69 Bank Street, Whangarei  
09 438 8046 • whangarei@cab.org.nz  
www.cab.org.nz

## UPCOMING EVENTS

**Now till 24 June - Puanga Matariki festival** - A special series of cultural events for people to come together and celebrate the Māori New Year, Te Tau Hou Māori. See more on page 10. Check out the Council's website for all the events - [www.wdc.govt.nz/Events/Festivals/Puanga-Matariki-Festival](http://www.wdc.govt.nz/Events/Festivals/Puanga-Matariki-Festival).

**Monday 2 June** - King's Birthday - public holiday

**Sunday 15 June** - Community planting day. See pg 19

**Friday 20 June - Matariki - public holiday.**

FREE native plants available from Whangārei District Council from today - check council's website for locations and details. Two plants per property available - whether you're a renter or owner

**Saturday 5 July - Māori All Blacks to play Scotland in Whangārei**

Semenoff Stadium - Black Ferns v Black Ferns XV trial match kicking off at 1:05pm and the Māori All Blacks v Scotland match at 3:35pm

**Saturday, 12 July - Sandbox Fandom Festival 2025**

A celebration of all things geek - art, games, cosplay, animation, comics, music, tech and more! 10 - 4pm at Forum North, 7 Rust Avenue, Whangārei. General Admission \$12, Family Pass \$40, booking fees apply - contact [info@sandboxfanfest.co.nz](mailto:info@sandboxfanfest.co.nz) and Sandbox Fandom Festival website

**Friday 8 August - Getting Out There Expo**

An Expo to shape a more inclusive and accessible Northland. Forum North will come alive with businesses, organisations and community leaders coming together to connect with disabled people, their families, carers, service providers and advocates. 9 - 4pm, Te Kotahitanga Expo Hall at Forum North, 7 Rust Avenue. Free event.

## REGULAR EVENTS

**Community Education Whangārei (CEW) at Kamo High School** - Website: <https://www.cew.ac.nz/> Email: [cew@kamohigh.school.nz](mailto:cew@kamohigh.school.nz); Phone: (09) 435 0889; Class venue: Unless otherwise stated all classes are held at Kamo High School

**Creating with Love Art Workshops** - adult colouring-in workshops, held on Thursdays 11-12 noon. Please RSVP with Multicultural Whangārei (09) 430 0571 or email [info@mwhg.org.nz](mailto:info@mwhg.org.nz)

**Jolly Dodgers Scooterers group** - If you are keen to join up call Wendy on 021 031 7781 or Denise on 022 087 4955

**Justice of the Peace** - For all your certification needs visit the JP Service Desk at the Onerahi Library on Thursday afternoons (between 2-4pm)

**Love Whangārei Monthly Clean Up** - Check LWMCU Facebook page for upcoming events. <https://www.facebook.com/LWMCU>

**Matakohe/ Limestone Island Volunteers** - Volunteer day is on the first Wednesday of every month. The group leaves from the Onerahi Jetty at 9 am. Volunteers work on a variety of jobs to suit whatever volunteers feel like doing. Bring your lunch. Home by 2pm

**Men-Tall mental health support** - Monthly support group for men dealing with everyday struggles - every third Monday of the month, from 6:30pm, at Brothers Barbers in Te Kamo. Contact Josh MacFarlane, 021 0255 1594 or [josh.macfarlane@mentall.org.nz](mailto:josh.macfarlane@mentall.org.nz)

**Miniature Train Running Days** - The track is open to the public every 3rd Sunday, School Holiday Wednesdays, and all Museum Live Days. Join us for school holiday fun train rides at the Miniature Railway at Heritage Park, Maunu, Whangārei. Only \$2 per ride

**Multicultural Whangārei's shared lunch** - on the last Tuesday of every month at noon, open to all. Bring a plate of food to share and have a chat. 12:15 - 1.15pm. Please RSVP by calling (09) 430 0571 or emailing [info@mwhg.org.nz](mailto:info@mwhg.org.nz)

**New Zealand Society of Genealogists Inc - Whangārei Branch** - Meets 1st Saturday, February to December, 9am - 12 noon in the May Bain Room, Whangārei Central Library. Contact Kathy 021 263 7358 or [Whangarei@genealogy.org](mailto:Whangarei@genealogy.org)

**Onerahi CoastLine Action Group** - Volunteers meet for an hour a week on Sundays (Summer: 7-8pm; Winter 4-5pm.) Would you like to help us regenerate neglected council reserves? Contact Valerie Green-Moss 0210672760 or Brian McLachlan 4363660

**Onerahi Indoor Bowling Club** - Every Friday 1pm to 3.30pm in the Onerahi Community Centre Hall. All are welcome. If you want to know more, contact Susan on 021 248 9989

**Onerahi Sit-Fit** - At Hope Onerahi Church, 137 Onerahi Road, Mondays 10.30 am

**Onerahi Hall market** - First & 3rd Saturdays of each month (& also other Saturdays - subject to availability) 8 am-12 pm. Plants, garden produce, jams/pickles, art/craft, 2nd hand goods etc. Inside stall fees \$13; Outside stall fees \$10; Kids stall fees - inside \$6, outside \$5. Phone Jenny (09) 436 0009 (preferably in the evening) to book a space

**Onerahi Strength and Balance Classes** - Mondays 8:45-9:45am and 10-11am, and Wednesdays 8:45-9:45am and 10-11am held at St. Stephens Church. \$2.00 donation please

**Parua Bay Village Farmers and Crafters Market** - Open every second Sunday between 9am - 1pm; Parua Bay Community Centre, 1341 Whangārei Heads Road, Parua Bay

**Repair Cafe Whangārei** - Volunteers repair most things for a koha. Every third Saturday of the month, 1.30 - 4pm, Reyburn House at the Town Basin. For more information, refer to the Facebook page or email [karen@force.org.nz](mailto:karen@force.org.nz)

**Waiata Māori** - on Wednesdays at 1- 2:30pm, open to all. Please RSVP with Multicultural Whangārei by calling (09) 430 0571 or emailing [info@mwhg.org.nz](mailto:info@mwhg.org.nz)

**Wai A Ariki Food Forest Gardening Group** - meets 10am on Fridays - everyone welcome

**Whangārei Budgeting Service** - FREE Financial Mentoring: Our financial mentors have the skills to negotiate debt repayments and discuss debt solutions with creditors

**Whangārei Choral Society** - Do you love to sing for pleasure? We meet Mondays, 7-9pm, at St John's Golden Church, 147 Kamo, to rehearse for 3 annual concerts. No auditions. Our friendly welcome mat is out to men and women, all ages. More Info - Meg - 027 337 9072 or [Whangarei.choral@gmail.com](mailto:Whangarei.choral@gmail.com)

**Whangārei parkrun** - a fun event where you can "run, walk or roll" every Saturday. It's a 5km course starting and finishing under Te Mate A Pohe Bridge in Port Rd. It's free to enter by going to <https://www.parkrun.co.nz/register>. We are there by 8am, come and join us. Open to all no matter what speed or age you are

**Whangārei Scottish Country Dance Club** - The Scottish Country Dance Club meets every Thursday at the Onerahi Community Hall at 7.30pm. All are welcome. If you want to know more before arriving, call Fiona on 437 1817

**155 Whare Āwhina Snack Packs** - Every Monday during term, one per child, all you need to add is the sandwich. Request through Facebook messenger OR come to 155 Open Arms (Corner Robert and Walton Sts) OR 155 Kamo Rd on Monday mornings between 8.30am and 9am

**155 Whare Āwhina Food Bank** - 155 Open Arms, 102 Robert Street, Whangārei. Call us on 09 437 0185 Ext 4 or freephone 0800 120 926 to request your parcel. Whānau can receive two parcels per month

Want your free community or sporting activities highlighted here? Notice something is still advertised here but is no longer offered?

Email: [onerahiorbitmagazine@gmail.com](mailto:onerahiorbitmagazine@gmail.com).

Onerahi Orbit is not responsible for any events listed here that are cancelled for any reason. Please check with local event organisers for confirmation.

## WINTER TIDE TABLES

Download your own copy of tides tables for Northland at <https://www.nrc.govt.nz/resource-library-summary/publications/coast/northland-tide-tables/>

DELIVERING THE FINEST

*Experience*

Roxanne Simpkin  
022 620 3421 | [roxanne.simpkin@harcourts.co.nz](mailto:roxanne.simpkin@harcourts.co.nz)

**Harcourts Whangarei**

Optimize Realty Ltd Licensed Agent REAA 2008

