

Onerahi Orbit

Free to you from the Onerahi Community Association

Summer - December 25/January 26

Covering Onerahi, Parua Bay, Pataua and Whangārei Heads



Onerahi Pahutakawa compilation by Wendy Giffin

Education grant Pg 3 • Whangārei Mayor Ken Couper's report Pg 9
Onerahi Yacht Club Pg 10 • Preparing for medical intervention Pg 18

**FROM FIRST HOMES TO
FOREVER HOMES,
I'VE GOT YOU** *Covered*

Roxanne Simpkin
022 620 3421 | roxanne.simpkin@harcourts.co.nz

Harcourts Whangarei

Optimize Realty Ltd Licensed Agent REAA 2008



REGULAR EVENTS

Alcoholics Anonymous - Fellowship available at Onerahi Community House, 130 Onerahi Road, Onerahi on Mondays 7:30pm; and at the Parua Bay Mt Manaia Bowling Club Rooms, 1347 Whangārei Heads Road on Mondays 7:30pm. See - <https://aa.org.nz/newcomers/faqs/>. If you are struggling and can't find a meeting please call 0800 229 6757 or email AA on help@aa.org.nz

Aqua aerobics - Held at Onerahi Hotel, Beyond the Lava Bar, Tuesdays and Thursdays at 11am. \$10/class. To book in and save a spot, call Catherine 021 2878 335

Community Education Whangārei (CEW) at Kamo High School - Website: <https://www.cew.ac.nz/> Email: cew@kamohigh.school.nz; Phone: (09) 435 0889; Class venue: Unless otherwise stated all classes are held at Kamo High School

Community swimming pool - Raurimu School Pool will once again be available for community use over the summer months.

Creating with Love Art Workshops - adult colouring-in workshops, held on Thursdays 11-12 noon. Please RSVP with Multicultural Whangārei (09) 430 0571 or email info@mwahg.org.nz

Jolly Dodgers Scooters group - If you are keen to join up call Wendy on 021 031 7781 or Denise on 022 087 4955

Justice of the Peace - For all your certification needs visit the JP Service Desk at the Onerahi Library on Thursday afternoons (between 2-4pm)

Love Whangārei Monthly Clean Up - Check LWMCU Facebook page for upcoming events. <https://www.facebook.com/LWMCU>

Matakohe/ Limestone Island Volunteers - Volunteer day is on the first Wednesday of every month. The group leaves from the Onerahi Jetty at 9 am. Volunteers work on a variety of jobs to suit whatever volunteers feel like doing. Bring your lunch. Home by 2pm

Men-Tall mental health support - Monthly support group for men dealing with everyday struggles - every third Monday of the month, from 6:30pm, at Brothers Barbers in Te Kamo. Contact Josh MacFarlane, 021 0255 1594 or josh.macfarlane@mentall.org.nz

Miniature Train Running Days - The track is open to the public every 3rd Sunday of the month, School Holiday Wednesdays, and all Museum Live Days. Join us for school holiday fun train rides at the Miniature Railway at Heritage Park, Maunu, Whangārei. Only \$2 per ride

New Zealand Society of Genealogists Inc - Whangārei Branch - Meets 1st Saturday, February to December, 9am - 12 noon in the May Bain Room, Whangārei Central Library. Contact Kathy 021 263 7358 or Whangareib@genealogy.org

Onerahi CoastLine Action Group - Volunteers meet for an hour a week on Sundays (Summer: 7-8pm; Winter 4-5pm.) Would you like to help us regenerate neglected council reserves? Contact Valerie Green-Moss 0210672760 or Brian McLachlan 4363660

Onerahi Indoor Bowling Club - Every Friday 1pm to 3.30pm in the Onerahi Community Centre Hall. All are welcome. If you want to know more, contact Susan on 021 248 9989

Onerahi Sit-Fit - At Hope Onerahi Church, 137 Onerahi Road, Mondays 10.30 am

Onerahi Garden club - Meets the third Friday of the month, 9.30 til 12.00 noon, at the Onerahi Community Hall. Speakers each month, and garden visits. New members warmly welcomed. Contact Maureen on maureend101@hotmail.com

Onerahi Hall market - First & third Saturdays of every month and all other Saturdays unless otherwise advised. 8 am-12 pm. Plants, garden produce, jams/pickles, art/craft, 2nd hand goods etc. Inside stall fees \$13; Outside stall fees \$10; Kids stall fees - inside \$6, outside \$5. Phone Jenny (09) 436 0009 (preferably in the evening) to book a space - or just turn up!

Onerahi Playcentre - Tuesdays and Fridays, from 9.00am to 12.30pm during school term time. 1B Church Street, Onerahi, Phone: 027 880 3894

Onerahi Strength and Balance Classes - Mondays 8:45-9:45am and 10-11am, and Wednesdays 8:45-9:45am and 10-11am held at St. Stephens Church. \$2.00 donation please

Onerahi Tennis Club - for all age groups and abilities. See facebook and website: www.clubspark.kiwi/OnerahiTennisClub

Onerahi Walk & Talk Group - Stay active, connect with others, and enjoy the outdoors during the warmer months. Supported by Te Tumu Waiora (Your Journey to Wellness). Meets every Friday morning at 10 am outside the Onerahi Community Hall. Wear comfortable shoes, bring a water bottle

Parua Bay Village Farmers and Crafters Market - Open every second Sunday between 9am - 1pm; Parua Bay Community Centre, 1341 Whangārei Heads Road, Parua Bay

Repair Cafe Whangārei - Volunteers repair most things for a koha. Every third Saturday of the month, 1.30 - 4pm, Reyburn House at the Town Basin. For more information, refer to the Facebook page or email karen@force.org.nz

St Stephen's Church Weekly Rhythm - Weekdays (Monday - Friday) morning Prayer: 6:15 - 7am, followed by tea or coffee; Mondays - Strength and Balance: 8:45am or 10am. Get fit and meet friends. Gold coin koha; Tuesdays - Games Drop-in: 9:30am till 12:30pm; Wednesdays - Strength and Balance: 8:45 am or 10am. Gold coin koha; Thursdays - Patchwork or Quilts: 9:30am till 12:30pm; Fridays - Drop-in Gardening: at the Maara Kai Wai-a-Ariki Onerahi-rahi, a community food forest project next to the church with a shared lunch at around 12:30pm in the church community room; Sundays - Community Worship: 9:30am. Phone 09 436 0207 or email StStephensOnerahi@gmail.com

Contents

Onerahi Pahutakawa compilation by Wendy Giffin	1
Regular Events	2
President's report November	3
OCA Education Grant	3
Home security tips	4
Budgeting at Christmas time	4
Stay safe on and in the water	5
Summer at St Stephens	5
PBRRA News	5
Onerahi garden club annual fundraiser	6
Parua Bay School Enviro Club win	6
Surfing legend Jack Hugland	6
Booking the Parua Bay Community Centre	6
Bett Harvey receives Whangārei Honours	7
Onerahi School farewells two classrooms	8
Whangārei Flying Club	8
Golf for good	8
Whangārei Mayor - Ken Couper	9
Onerahi Playcentre summer activities	9
Introduction to Onerahi Yacht Club	10
Volunteering Northland	10
Onerahi Volunteer Fire Brigade	11
Onerahi School report	12
Committed to te reo Māori	12
Fun time - Volcanoes!	13
What's on at Whangārei Choral	13
Hon Dr Shane Reti	15
Councillor Amy Macdonald NRC	16
Our new elected councillors	16
IT tips for a relaxed Christmas	17
Bream Head Conservation Trust	17
Preparing for medical intervention	18
Note this water notice	18
Enjoy the outdoors this summer	19
Over 900 trees and counting - OCLAG	20
Kiwi coming back to Onerahi's backyard	20
Lowest pest numbers in the district	21
Moth plant season	21
Faith for today	22
Local News	23
Upcoming events	24

Wai A Ariki Food Forest Gardening Group - meets 10am on Fridays - everyone welcome

Whangārei Budgeting Service - FREE Financial Mentoring: Our financial mentors have the skills to negotiate debt repayments and discuss debt solutions with creditors

Whangārei Choral Society - Do you love to sing for pleasure? We meet Mondays, 7-9pm, at St John's Golden Church, 147 Kamo, to rehearse for 3 annual concerts. No auditions. Our friendly welcome mat is out to men and women, all ages. More Info - Meg - 027 337 9072 or Whangareib.choral@gmail.com

Whangārei parkrun - a fun event where you can "run, walk or roll" every Saturday. It's a 5km course starting and finishing under Te Mate A Pohe Bridge in Port Rd. It's free to enter by going to <https://www.parkrun.co.nz/register>. We are there by 8am, come and join us. Open to all no matter what speed or age you are

Whangārei Scottish Country Dance Club - The Scottish Country Dance Club meets every Thursday at the Onerahi Community Hall at 7.30pm. All are welcome. If you want to know more before arriving, call Fiona on 437 1817

155 Whare Āwhina Snack Packs - Every Monday during term, one per child, all you need to add is the sandwich. Request through Facebook messenger OR come to 155 Open Arms (Corner Robert and Walton Sts) OR 155 Kamo Rd on Monday mornings between 8.30am and 9am

155 Whare Āwhina Food Bank - 155 Open Arms, 102 Robert Street, Whangārei. Call us on 09 437 0185 Ext 4 or freephone 0800 120 926 to request your parcel. Whānau can receive two parcels per month



- Cultivate and nurture the interests of the community of Onerahi
- Promote the district
- Assist residents
- Develop and administer facilities

President's report



A pleasant change in the weather greets Onerahi residents. Warmer temperatures seem to lift the spirits of people, and we can observe plenty of residents engaging in physical activity daily.

The shopping precinct refresh continues with the arrival of planter boxes which will be planted with the support of the local garden group. These boxes in the shopping area should serve to soften the area and encourage more connection and conversations. They will of course be supplemented by the rehangings of the baskets along the shopping precinct.

The basketball court will be marked out to provide some more structure to the use of the court by young people as the daylight hours increase. We hope this will again encourage more activity in Sherwood Park.

The Whānau activity activations at Onerahi school continue to be a hit with the children and their parents with regularly 120 people engaging in sports on the school grounds after school on a Wednesday as part of the community connect group. This activity is well supported by Touch, Volleyball, Bike, Football and snag golf. The OCA are keen to see plenty of activity available for our young people in the evenings. We are aware of touch, tennis, table tennis, golf and bowls, indoor and outdoor being offered along with less structured recreation activities such as cycling, running and walking and dancing.

The Raurimu School Pool will once again be available for community use over the summer months beginning in late November. It is pleasing to note the young people taking advantage of the pontoon for swimming as the warmer weather arrives.

A link for the Community Grant applications and nomination form for community contribution is below

https://drive.google.com/drive/folders/1x1n7nOVPFI-oHlv3ITNcY-Nn4Wns_hpo?usp=drive_link

Recognition of volunteers and people who contribute to the Onerahi way of life is important to the committee. We would like to hear about people that do good things. Please nominate them via the Onerahicomunity@gmail.com.

Lastly the OCA would like to welcome the new community constable Andrew Dunn who recently was added to the community police team at Onerahi. A local resident, Andrew is looking forward to being more visible and having an impact on what he sees in a great community.

Grant Harrison, President

OCA Education Grant

The Onerahi Community Association has two community education grants available, to the value of \$500 each, for students who have a close association with Onerahi.

If you are a tertiary student, or will be in 2026, you are welcome to complete an OCA grant application form and explain why you think a \$500 grant would be of benefit to you, what you will use it for, along with verification of your relationship with Onerahi. Residents in the area will get preference over non residents.

You can apply for an application grant form by emailing onerahicomunity@gmail.com and once we receive this back from you, our OCA Grants Subcommittee will process it.

Dee Williams (Secretary of OCA)

Published in April, June, August, October, and December.

The Onerahi Orbit is a not-for-profit publication owned by the Onerahi Community Association, that reports the good news in Onerahi, Parua Bay, and Pataua. 4,000 copies are printed by JOP and distributed by volunteers throughout this area; readership is approximately 12,500. Opinions expressed in signed articles, or in advertisements appearing in the Onerahi Orbit are those of the author and advertiser and do not reflect those of this newsletter nor its publisher. No part of this publication may be reproduced without the prior written permission of the editor, writers, and owners of Onerahi Orbit.

Follow us on Facebook
www.facebook.com/onerahiorbit



Editor: Margie Kent
Email: onerahiorbitmagazine@gmail.com
Stories of 400 words or less are due for the next Orbit by 6 March 2026 - share your news by emailing Margie at onerahiorbitmagazine@gmail.com

Advertising: Meg - 022 641 9786
Email: onerahiorbit@megatype-publishing.co.nz

Design: Megan Lavin-McIsaac 022 641 9786
Email: onerahiorbit@megatype-publishing.co.nz

Accounts: Rose Tantau 438 5499
Email: ccoca@xtra.co.nz

Deliveries: Allan Westlake 021 437 591

75 YEARS

Morris & Morris Funerals

MEMBER

Pets grieve too.
Our team encourage you to have your loved one's pet join & support you during this time at our facilities.

199 Kamo Road, Whangarei 0112
PO Box 8043, Kensington 0145
Phone 09 437 5799

15 Gladstone Street, Dargaville 0310
PO Box 306, Dargaville 0340
Phone 09 439 8048

Home security tips for the Summer Season

As the summer months arrive, many households find themselves spending more time outdoors, attending events, or traveling for holidays.

Unfortunately, this also means homes are often left unattended, making them more vulnerable to opportunistic intruders. By taking a few precautionary steps, homeowners can help ensure their property remains safe and secure throughout the season.

1. Lock All Doors and Windows

Before leaving home, even for a short period, always verify that all doors and windows are securely locked. Pay particular attention to less frequently used entry points such as side doors, basement windows, and garage access. For sliding glass doors, consider placing a security bar or wooden rod in the track for added protection.



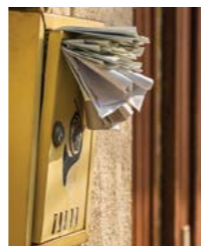
2. Secure Windows and Ventilation Points

While it can be tempting to leave windows open for ventilation, unsecured openings present an easy opportunity for break-ins. Use locking mechanisms or adjustable stops to allow airflow while preventing full openings. When away for extended periods, ensure all windows are closed and properly locked.



3. Maintain the Exterior Appearance

An unkempt lawn or overflowing mailbox can signal that a home is vacant. Arrange for a neighbor, friend, or professional service to mow the lawn, collect mail, and remove any flyers or deliveries. A well-maintained exterior helps convey the impression that the property is occupied.



4. Utilize Timed and Smart Lighting

Proper lighting is an effective deterrent against intruders. Use timers on indoor lamps or install smart lighting systems that can operate on a schedule or be controlled remotely. Motion-sensor lights at entrances and walkways also enhance nighttime visibility and security.



5. Engage with Your Neighbors

Establishing communication with trusted neighbours provides an added layer of protection. Inform them if you will be away, and ask that they keep an eye out for any unusual activity around your property.



By implementing these simple yet effective measures, homeowners can enjoy the summer season with greater peace of mind, knowing that their homes remain safe and well-protected.

Budgeting at Christmas time

One of the cruelties of life is that the expenses of Christmas holidays are followed immediately by the expenses of the new school year.



This is compounded for those who are part time or self-employed, because at the same time the income stream slows to a trickle over January. A triple whammy.

MoneyTalks is a national free, online confidential financial helpline for all New Zealanders. Operated by FinCap and funded by the Ministry of Social Development (MSD), MoneyTalks is committed to ensuring that everyone in Aotearoa has access to free, high-quality financial mentoring. Their support includes: Advice on paying bills, managing debt, and helping people to connect with financial mentors in their local community. Call them on 0800 345 123, text 4029, email help@moneytalks.co.nz, join them on Facebook at Cheaper Living or use the live webchat online at www.moneytalks.co.nz. Their top tips for Christmas are:

- Have a plan and save for it
- Set a limit on gifts and instead create magic with local facilities or DIY
- Create family games and outings to local places to use up energy, and
- Focus on creating family traditions and memories rather than buying "stuff".

Stay Safe on (and in!) the Water This Summer

Heading out to swim, boat, or fish? Keep safety top of mind so every day ends with smiles—not spills!

Swim Smart:

- Always swim with a buddy
- Watch kids closely—every second counts

Boat Safe:

- Wear your lifejacket (no excuses!)
- Check the weather before you go
- Never drink and drive your boat

Fish with Care:

- Be mindful when casting
- Keep gear tidy and watch your footing
- Follow local fishing rules

Refer to page 19 for more details...



Summer at St Stephens

A Community Calendar from St Stephen's Church: November 2025 – February 2026

St Stephen's Church community invites you to join us. We are an inclusive, welcoming, and safe community seeking to practice our faith through service. Explore how journeying with Jesus the Christ helps one to "lean-in" to a kinder and softer way of being. We support local health and justice issues, including our neighbours' quest to promote community health and concerns about new 24/7 helicopter noise. We are a non-commercial space where everyone is a volunteer...and everyone is welcome! Haere mai!

Contact Us: 09 436 0207 or StStephensOnerahi@gmail.com. Discover our Welcome Pack online at www.StStephensOnerahi.org.nz or just turn up at 88 Church Street.

Nā tō rourou, nā taku rourou ka ora ai the iwi.

(With your food basket and my food basket the people will thrive.)

Editor's note: The full calendar of events at the church is included in the 'Regular Events' on Pg 2 under St Stephen's Church, and in the upcoming events diary on page 24.

PBRRA news

Following a dawn blessing held 12 November, we are very happy to confirm the Parua Bay Skate Park is now complete and open.



Please access it via the new concrete path to the Community Centre. We would like to thank the many people who have contributed over the years to making this happen, from community surveys over a decade ago highlighting the need to local parents, children and other skaters keeping it going. Particular thanks to Whangārei District Council (WDC) elected members and staff helping to fund, manage and support the project, including attracting a Lottery Grant for nearly half the cost! Most of all, we look forward to it being enjoyed by skaters for many years to come.

We are pleased to advise that both Parua Bay Public Toilets have been installed, with the one beside the Sports Field up and running and the other between the Community Centre and Skate Park to open soon.

Following our 19 November AGM, PBRRA is due to give WDC some free labour to reduce costs of works planned over summer for improving local pathways and road safety.

In 2026 we plan to focus on progressing opportunities to improve connectivity, recreation, resilience, natural environment and awareness of local history.

If you wish to become a member of PBRRA, and receive regular updates about what is happening in your community, please contact us on paruabayrra@gmail.com.

Nga mihi
James Griffin, Parua Bay Residents and Ratepayers Association

SKYLINE AIRPORT CAFE
FLY AND DINE

Monday to Friday: 5am to 5:30pm
Saturday: 5:45am to 2:45pm
Sunday: 8:00am to 5:30pm
OPEN 7 DAYS A WEEK!!!
Pop in to see us and have a coffee!

CONCRETE COURIER

No mess, no stress just concrete!

f Concrete Courier

Experts in Delivering Small Batches of Concrete

022 422 3068 concretecouriernz@gmail.com

For example:
house & deck piles, fence & retaining wall posts, garden shed & spa pool slabs, patio floors, paths & small foundations etc

Whangarei Airport

Daily Air Services around New Zealand and the world with Air New Zealand

Other Services Provided: • Flight Training • Aircraft Maintenance • Helicopter Hire • Secure Carparking • Rental Cars

www.whangareiairport.co.nz • Skyline Café Open 7 days

A growing event



The Onerahi Garden Club held their much loved annual fundraising event on 17 October.

The group usually meets on the third Friday of the month at the Onerahi Community Hall. Rose Tantau sent the Orbit a photo of the hall set up for the event, and another of Luanne Taylor, who specialises in air plants (she had bought the red amaryllis flower from another of the stalls).



Parua Bay School's Enviro Club wins award

Congratulations to the Enviro Club at Parua Bay School for winning the Kings Seeds October Community Spirit Award.

Since launching their Waste Wise journey in October 2024, the school's Enviro Club has shown what's possible when young minds are supported to take the lead. With guidance from EcoSolutions, along with some much-appreciated parental support, and the dedication of their caretaker, Andre, the students have transformed the school's approach to waste management. They have installed compost bins and a worm farm, introduced soft plastic and paper recycling, and implemented new bin signage to empower everyday decisions.

The result? What was once a weekly 4m³ skip of waste to landfill is now just one a month - saving the school both environmentally and economically. That's the power of hands-on, student-led action. These young changemakers are turning their sights to something even bigger: planting a food forest to nourish their school and wider community for years to come.

Based on a Kings Seeds press release

Surfing legend

Jack Hugland of Parua Bay School won the Year 8 boys' surfing competition at the 2025 Aims Games held in Tauranga in September.

He also won a sportsmanship award at the same event. This win follows his Polar Bear Classic 2025 placing of second in the U14 Boys division in July this year.

Fantastic stuff Jack - keep the momentum going! The Onerahi Orbit wishes you a successful summer.

Booking the Parua Bay Community Centre

The Parua Bay Community Centre has upgraded its website and all information regarding bookings can be found there, including cost and availability.

There is now a regularly updated calendar in the BOOKINGS section of the website <https://paruabaycommunitycentre.org.nz/Bookings>

The best way to reach the booking officer (Richard Burgoyne) with a booking enquiry is to complete the "Make a Booking Enquiry" section. These go directly to him, and he will respond within 24 hours. He can also be emailed directly at: bookings@paruabaycommunitycentre.org.nz.

TV AERIAL SERVICES

NORTHLANDS AERIAL SPECIALIST

FREEVIEW

SALES • SERVICE • INSTALLATION

UHF Aerial & Satellite • Freeview TV

- Domestic & Commercial • Radio/FM
- Campervan / Caravan Installs

Two Year Guarantee

Over 30 Years Servicing Whangārei

MACK WILKINSON
436 0508

M: 021 992 974
W: www.tvas.co.nz
E. mack@tvas.co.nz

Bett Harvey receives Whangārei Honours

Many people in Onerahi will know of Bett Harvey's Sitfit classes. For 50 years, Bett has been running fitness classes that help people stay active into advanced age. She was recently singled out to be honoured by the Whangārei District Council as one of four residents to receive the 2025 Whangārei Honours.

Her unwavering commitment to fitness and wellbeing has touched countless lives and, even now, well into her eighties and facing her own health challenges, Bett continues to lead weekly SitFit classes with remarkable energy and grace.

Bett's journey in fitness began in 1984. As one of the first Les Mills instructors, she worked for more than eight years at the Kensington Gym. Beyond the gym, she was a formidable basketball player for 25 years, representing Northland. She was an accomplished bodybuilder, winning titles including Pan Pacific, Northland, and Most Muscular Woman in Auckland.

Her true legacy, however, lies in her SitFit work with older adults. These are more than just workouts – they're uplifting, inclusive gatherings that foster community and joy. Bett's approach is gentle and encouraging. She never pressures anyone to do more than they can, always offering modifications and celebrating progress, especially in areas like balance, which is crucial for older adults.

Beyond fitness, Bett has made a profound impact through her work with Northland Home Support, where she cared



The 2025 Civic Honours Award recipients (left to right): Harry Carter, Bett Harvey, Alan Bayly and Darrell Trigg

for clients for 12 years. She often stayed beyond her paid hours to ensure her clients were safe and comfortable, and regularly took on extra shifts when no one else was available. Her quiet generosity and selflessness have made a lasting difference in many lives.

Bett Harvey is a rare gem – humble, hardworking and deeply caring. She never seeks recognition, yet her contributions have been transformative. Her decades of service, her tireless advocacy for older adults, and her ability to bring people together through movement and kindness deserve to be celebrated.

Based on a media release by the Whangārei District Council.

- » Business Cards
- » Flyers
- » Posters
- » Vinyl Labels
- » Books
- » Magazines
- » Letterheads
- » Folders
- » Invoice Books
- » Calendars
- » Pads
- » Rack Cards

AND MUCH MORE!
ALL WORK GUARANTEED

0800 141 402 [f/jopprint](https://www.facebook.com/jopprint)
info@jop.co.nz • www.jop.co.nz

JOP
design | print | distribution

OVER 25 YEARS EXPERIENCE

Thinking of Selling your property?

"An Offer A Day After Listing!"

It has been such a pleasure working with Tracey. I was a little nervous being based in Auckland and selling an elderly family member's property in Whangareei but Tracey took care of absolutely everything from arranging house washing, internal cleaning, a locksmith etc. Nothing was ever a problem for Tracey and she replied to all my queries promptly, honestly and in a friendly manner. Tracey's market knowledge is amazing! She told us immediately what she thought the property would sell for and she was bang on the mark with a fabulous offer being made after one day on the market. Thank you so much Tracey. You were such a pleasure to work with and I hope our paths cross again in the future" *Michelle & Frazer Dale*

Tracey Lovelock-Butler
P: 027 8595 777 E: tracey.lb@independentagent.co.nz
Independent Agent Ltd - Licensed REAA (2008)

Delivering a quality, boutique experience and achieving a premium price for your property - whatever the market!

Onerahi School farewells two classrooms

On Monday 15 October at 1:30pm, Onerahi School hosted a gathering of students, ex-students, teachers, staff members, and members of the community to farewell two classrooms. The buildings had been there longer than many could remember and, through the relentless march of time, had become unsuitable for use and ready for a well-earned rest.

Matua Fred supported the group through the whakawātea. This ceremony provided everyone with a chance to reflect and share what these two spaces meant to them. They had been home to many classes of students throughout the years and more recently became home to a model club and Asian language learning. There were even a few teachers

who recounted their time as students in the classroom. The end of the whakawātea signalled that the classrooms were cleansed and ready to be removed over the holidays. Room 24 was also the birthplace of Reorua (a bilingual class), which started taking shape two years ago and has grown into a class of 50 tamariki. It seems fitting that the removal of Room 23 and 24 will lead to the exposure of a new purpose-built classroom behind it that will host this kaupapa. This new space will be blessed in Term 4 at a dawn ceremony.

Contributed by Danny Hamilton, Onerahi school



Photo by Rose Tantau

Whangārei Flying Club

The Whangārei Flying Club is based at the Onerahi Airport and has an active interest in supporting flying educational activities. Recently, keen youngsters from the Kamo Cubs visited their clubrooms to learn about aeroplanes, airports and the associated safety issues and what makes planes fly.

Hot on the heels of that visit, was one from the Air Training Corps. Alan, Neil, Dave and Tim from the club got the cadets up close and personal with the club aircraft and guided them through flying training and explaining where a career in aviation could perhaps take them.

Based on Facebook posts from the Whangārei Flying Club

Golf for Good

Early next year, local Whangārei business Boost Brokers will launch their inaugural Golf for Good event - and they have selected I Have a Dream as their recipient charity.

The tournament will be held at The Pines Golf Club at Whangārei Heads on Friday 20 February. This is a great time of year to get your team out on the green. Open to golfers of all skill levels, participants in teams of three will make their way around the course with on course challenges, raffles, prizes, food and drinks available all day. Tickets are \$120 per person.



When things don't go well!

We are here to care ...

- offering ...
- 🐾 Accident and emergency care
- 🐾 Health checks and vaccinations
- 🐾 Trained veterinary nurses
- 🐾 Open 7 days
- 🐾 24 hour emergency care



PET CENTRES
PH 470 1060

Whangārei – 16-18 Maunu Road
Hikurangi – Cnr George & Park Sts
Onerahi – 165 Onerahi Road

Like us on Facebook www.northvets.co.nz

MAYOR'S MESSAGE



Mayor Ken Couper

With our new Council recently elected, I'd like to thank everyone who participated in the recent local elections. Our Whangārei Urban Ward voters turned out in force to elect three returning councillors (Crs Marie Olsen, Nicholas Connop and Paul Yovich) and two new councillors for the 2025-2028 term.

Our two new Urban Ward councillors are experienced local politician Crichton Christie, and first-time councillor, Brad Flower. The ward farewelled former councillors Carol Peters and Jayne Golightly.

We have heard the voice of our community through this election and start this term with a shared commitment to getting the right outcomes for our District. Reviewing Council expenditure is a key priority for me, alongside strengthening our economy, and building stronger relationships with hapū and central government.

Getting the balance right between infrastructure investment and rates affordability will be an ongoing focus. With a growing population, we need to invest in core infrastructure to keep up with demand. We also need to be realistic about the financial constraints that our communities are facing.

In terms of local projects, the Onerahi Sports Park is getting an upgrade with new LED lighting being installed to support rugby training, multi-sport use, and community events. This will extend evening access and help meet growing demand. The lighting upgrades are expected to be completed early next year.

Starting January 2026, Council will be making safety improvements on Onerahi Road/Old Onerahi Road. This work includes upgrading two road intersections and will improve the cycling connection to the Onerahi Shared Path. We are also coming into our summer construction season and plan to make the most of the dry weather to get on with maintenance and renewals around the District.

As we head into warmer days, it's a great time to enjoy everything Whangārei has to offer – including the Whangārei Christmas Festival, which runs until 24 December. Across the district, you'll find festive markets, concerts, arts and crafts, workshops, and parades. Check out www.wdc.govt.nz/ChristmasFestival for full details.

Before heading to the beach, check our website for summer rules around dogs, horses, camping and driving. If you have any concerns about noise, animals or anything else, let us know. For non-urgent issues, you can also message us on Facebook.

Best wishes for the festive season ahead – get out there and enjoy our beautiful District, be safe and look after one another.



Preparing for summer

The Onerahi Playcentre loves to provide different learning opportunities for our tamariki.

Recently they hosted a poi making workshop and used the fire pit to toast marshmallows! Kids and whānau alike at the centre are looking forward to having lots of outdoor playtime in the sun this term - join them with your preschool children on session Tuesdays and Fridays anytime between 9am-12:30pm.

FLAMES

RESTAURANT, BAR & CAFE

OPEN DAILY

WE'D LOVE TO SEE YOU

BREAKFAST/LUNCH MON- FRI 7AM- 2PM

SAT/SUN 7.30AM- 2PM

DINNER MON/SAT 5.30-8.30PM

DELICIOUS COFFEE · COLD DRINKS · COOKED BREAKFASTS
HOT FOOD · LOCAL INGREDIENTS · SEASONAL MENUS

8 WAVERLEY STREET, ONERAHI, WHANGAREI, 0110

PH: 09 436 1539 - FIND US ON

CLOSED PUBLIC HOLIDAYS

Open from

7.30am to 8.00pm Monday to Friday

8.00am to 8.00pm Saturday to Sunday

Phone 09 436 8008

Introduction to the Onerahi Yacht Club (OYC)

Formed in 1952, the Onerahi Yacht Club (OYC) has a proud history hosting countless sailing regattas, featuring both keeler and centreboard fleets. Race courses are set just outside the clubrooms, with each course dictated by the wind direction. OYC has a friendly, family-oriented atmosphere that welcomes sailors and spectators alike.

Join the Fun at OYC Tuesday Twilight Sailing! OYC invites sailors to bring your own boat and join in the action. A selection of club boats are also available on Tuesday Twilight evenings throughout daylight savings. It's a fantastic way to experience the thrill of sailing in a friendly, supportive environment - with a safety boat on standby to keep things fun and safe for all.

OYC hosts a range of regional regattas, including Elliot 5.9, Flying Fifteen, OK Dinghy and combined events in partnership with other yacht clubs around the country. With a strong legacy of success, OYC sailors



have achieved national and international acclaim across numerous sailing classes.

Our annual race calendar includes popular events such as: The Centreboard Twilight Series, Limestone Island Race, Sandspit Scramble and the Guano Rock Race.

For more information email oycsailing@hotmail.com

TWILIGHT TUESDAY DINGHY SAILING / RACING

Free entry and all welcome!

Dust off your old boat & join us, any sailing dinghy will do... OK Dinghy, Jolly, P Class, Opti, Starling, Sunburst, Laser etc.

TWILIGHT SERIES 1

30-Sep-25	Race 1
07-Oct-25	Race 2
14-Oct-25	Race 3
21-Oct-25	Race 4
28-Oct-25	Race 5

TWILIGHT SERIES 3

20-Jan-26	Race 1
27-Jan-26	Race 2
03-Feb-26	Race 3
10-Feb-26	Race 4
17-Feb-26	Race 5
24-Feb-26	Race 6

TWILIGHT SERIES 2

04-Nov-25	Race 1
11-Nov-25	Race 2
18-Nov-25	Race 3
25-Nov-25	Race 4
02-Dec-25	Race 5
09-Dec-25	Race 6

TWILIGHT SERIES 4

03-Mar-26	Race 1
10-Mar-26	Race 2
17-Mar-26	Race 3
24-Mar-26	Race 4
31-Mar-26	Race 5

Volunteering Northland's third annual Volunteer Fair

Whangārei Central Library was buzzing with activity on the morning of Saturday 20 September, as community organisations and the general public gathered for Volunteering Northland's annual Volunteer Fair.

The fair is designed to build connections, raise public awareness of the diversity and number of community organisations in Northland. It offers an opportunity for aspiring volunteers to find a role that aligns with their values, skills and interests. As in previous years, the free and family friendly event offered a number of prizes, activities and entertainments, ensuring something of interest for all ages. Overall, the fair received very positive feedback from both organisation representatives and the general public. If you are keen to volunteer but don't know where to start, look at volunteeringnorthland.nz - they are set up to advise people just like you!



ONERAHI FISH SHOP

OPEN 6 DAYS A WEEK

MON to SAT 11.30am - 9pm

09 436 0958

112 Onerahi Road
Onerahi Shopping Centre
(Next to Pepe's)

Chinese food
Drinks
Milkshakes
Take-aways



Onerahi Fire Station. Photograph by Nigel Capon

Onerahi Volunteer Fire Brigade

The last few months has seen the Volunteer Fire Brigade very busy.

Ironically some of the more significant (larger) calls have been to addresses outside our home district. Some of these calls have been significant events. By way of explanation; due to smoke alarms and fire safety awareness many fires are being discovered early in the growth and already dealt to by occupants or still small enough, that we can extinguish before much damage is done. A big tick for why we promote smoke alarms as much as we do.

In recent months, our brigade has assisted Whangārei Fire Brigade at several major fires. Though unfortunate for property owners, these incidents have given our members important experience to help them advance in their roles.

Members respond to incidents at unpredictable times, sometimes leaving their beds at night or obtaining permission from employers to leave work during the day. These events rarely occur at convenient moments, often interrupting work or family commitments. Nighttime calls can be particularly challenging, as members may return home only shortly before needing to prepare for their regular workday.

We appreciate the support of our members, partners, and their families, whose lives are impacted by this sudden change; without them, our brigade would be much smaller or might not exist.

A member of our team had the opportunity to spend a weekend at a busy Auckland station, accompanying an experienced crew to observe their operations. The experience was highly impressive and provided valuable insights into their work.

In addition to the jobs mentioned above, we have responded to vegetation fires, at least three shed fires, a kitchen fire, false alarms, flooding incidents, a light aircraft accident, and ongoing medical calls supporting St John.

With the arrival of summer, attention shifts to the potential for vegetation fires. Fires can occur early in the season and require considerable resources and time to be managed effectively.

Our usual participation in the Christmas parade in Whangārei is scheduled for the end of November. The brigade wishes you a Merry Christmas, and thanks you for the support many of you have provided.

Contributed by Mike Chubb, Onerahi Volunteer Fire Brigade



Build the Future

Study Architectural Technology & Civil Engineering at NorthTec in 2026

The NZ Diploma in Architectural Technology (Level 6) will unveil the exciting world of architecture giving you the theory of design and construction, design principals, and how to work with clients to maximise the success of building projects. You will also explore the world of CAD, BIM and 3D designing.

The NZ Diploma in Engineering (Civil Engineering) (Level 6) will gateway you into the world of infrastructural development. You'll learn about land surveying, highway and traffic engineering, geotechnical engineering, structures, water and wastewater systems.



NorthTec
TAI TOKERAU WĀNANGA

northtec.ac.nz | 0800 162 100



Onerahi School report



Kia ora koutou,

A school is not only a place where tamariki come to learn but it also provides a hub for a community to come together. For this issue of the Onerahi Orbit I would like to highlight a community event that our kura has hosted over the year that has seen people of all ages coming together to enjoy physical activity. Introducing the Community Connect Sports Fest! Community Connect runs the Sports Fest led by Steven Beazley and his team. The goal of the Sports Fest is to encourage whānau and communities to come together and play. Healthy bodies contribute to healthy minds and connected people lead to healthy communities. With the times of social distancing receding into history, it feels right having our school field bustling with people after school. A Sports Fest session starts at 4:30pm, with registered families congregating on the field. Registration is free and in Term 4 we had over 100 families register. It begins with a karakia and then whānau choose an activation. Activations include volley ball, touch, snag golf, bikes, to name but a few options. While everyone is playing, the BBQ is fired up and kai is ready to go when a break appears. Each session ends with a group photo and closing karakia. Throughout the event spot prizes are also handed out. At the time of writing our final session for the year is 12 November. This will see our friends from the fire station visiting with the truck, as well as a Colour Run (much like the

one we ran last year at school). A reminder that if you have a community event that will help engage and connect our tamariki and their families, please let us know so we can promote it to our whānau. As this is the last issue for the year I also wanted to say thank you to our teachers, learning support assistants, and other staff members for another great year. Your mahi makes a difference and is valued. Thanks also to our tamariki for adding such colour and energy to our kura and thank you to their whānau for the continued support and trust. Have a great break and we will see you in 2026.

Ngā manaakitanga,
Danny Hamilton
Tumuaki Tuarua /
Deputy Principal



Fun time - Volcanoes!

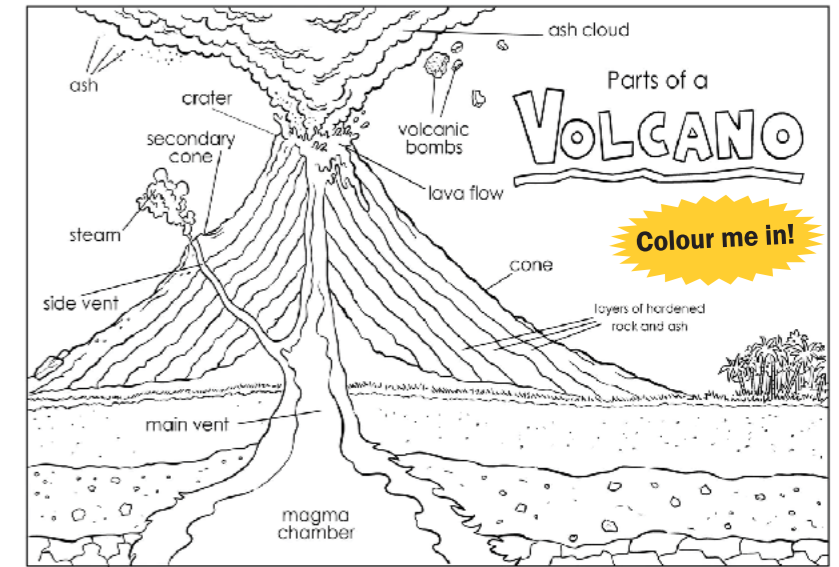
Libby and Peter Urbahn have been writing into the Orbit to tell us about the fascinating geology of Northland – as they say “We hope you’ve enjoyed our foray into Northland’s geological past. Of course, there’s so much more to uncover than what we’ve shared. The best way to experience it? Go exploring yourself.” So - we wondered if our Orbit Whānau would like to go exploring our local VOLCANOES these holidays?

Mount Parihaka

Mount Parihaka is actually an old volcano! The dome (which is made from what used to be the red-hot molten rock inside the volcano) is about 250 metres tall and is part of the Whangārei volcanic field. It is about 20 million years old. The dome is surrounded by the Parihaka Scenic Reserve. There is a road to the summit, a lookout platform to view the city below and walking tracks through the reserve - including walks all the way to a bridge linking to Mair Park. As well as being an old volcano, Parihaka was a significant and powerful Māori pā (fortified village) and remnants of its historical Māori past, including earthworks and kumara pits, are still visible. It also features a Second World War memorial for you to take a look at.

Mount Manaia

Mount Manaia stands 420 metres tall, and the summit offers outstanding views of Marsden Point, Bream Bay and the Hauraki Gulf to the south, Whangārei Harbour to the west and the Poor Knights Islands and Northland coast to the north. Along with Mt Lion, Bream Head and the Hen and Chick Islands; Mt Manaia is a remnant of a HUGE volcano



which erupted 16 to 22 million years ago. The massive 50 km2 stratovolcano stretched all the way from Mt Manaia to the Hen and Chick Islands! Today, blanketed by native bush, Manaia's jagged peaks and steep bluffs are in a reserve which features a well-maintained track to the summit. It is a significant cultural landmark for local iwi, who consider the mountain to represent the ancestor Manaia, with the rocky pinnacles representing his frozen family. The area surrounding the mountain remains sacred and visitors are asked to treat it respectfully. That includes leaving nothing but footprints behind, taking only memories away and staying on the marked tracks. It's best to go early in the day for a cooler climb and fewer crowds. Hikers should wear sturdy footwear and be cautious as the rocky peak has no safety barriers and can be slippery.

TopSails

beach road

BRASSERIE

new zealand contemporary meets classic casual french

206 Beach Road, Onerahi 09 436 2985
www.topsail.co.nz dine@topsail.co.nz

Now Open Wednesday to Saturday for dinner from 5pm

- Same... deliciousness, views & team
- Slightly different... menu, hours & service
- More... choice, tables & dining opportunities

... so, Same but Different!

Pop in from 5pm Wednesday to Saturday. See you soon!

Committed to te reo Māori

Whangārei District Council and Whangārei hapū remain committed to working on a long-term strategy for the use of the Māori language, and are members of the nationwide Aotearoa Reorua programme.

Māori Relationships Manager Mark Scott noted that "Continuing to normalise te reo Māori as much as possible across our work for the District is one step towards enhancing strategic partnerships with mana whenua and hapū."

TE WIKI O TE REO MĀORI
AKE AKE AKE
A FOREVER LANGUAGE

Parua Bay Childcare

Nuturing childcare for babies to 6 years old

6 Lamb Road, Whangārei
Phone: 09 436 5544

MARKET READY

021 517 881

marketready2024@gmail.com
www.marketready2024ltd.co.nz

LET'S GET MARKET READY!

- REAL ESTATE • DECEASED ESTATES
- END OF TENANCY • NEW BUILDS
- DOWNSIZING & RELOCATION

- House Washing
- Water Blasting
- Garden Clean-ups
- Rubbish Removal
- Interior Cleaning
- Carpet Cleaning
- Green Waste Removal
- Lawns
- Lawns & Garden Maintenance

H2O PLUMBING SOLUTIONS

• New builds • Leak repairs • Hot water upgrades
• Maintenance • Bathroom /kitchen renovations
• Commercial plumbing

For all your plumbing needs contact Brook today
Email: admin@h2ops.co.nz

09 302 2282 www.h2ops.co.nz

Harcourts Whangarei

LOVE IT, LIST IT, SELL IT THIS

Summer

Tracy Dawson
022 468 2765
tracy.dawson@harcourts.co.nz

Optimize Realty Ltd Licensed Agent REAA 2008

HAMMER HARDWARE

ONERAHI

WE'RE YOUR LOCAL

Meteor Weston Kettle BBQ 54cm

\$99 each

Charcoal, Heat beads and Briquettes - from 2kg upto 10kg.


Number 8 Portable Smoker

\$49⁹⁹ each

Fishtech Childrens Fishing Rod


\$24⁹⁸ each

Grilled Tulsa Portable Gas BBQ 2 Burner

\$299 each

Grilled Tulsa Portable Gas BBQ 1 Burner

\$229 each

Weber Baby Q 1000N Gas BBQ LPG Black or Red

\$449 each

Weber Q 2600N+ Gas BBQ LPG Red or Black

\$699 each

Weber Baby Q Stand

 Also fits Weber Q Compact
 Full range of Weber accessories also available
\$169 each New line!

Bestway Inflatable Pool Fastset 305cm x 76cm

\$149 each

Bestway Steel Pro Swimming Pool 3.66m x 0.76m

 Includes filter pump
\$199 each

Bestway Pool with Canopy 3.96m x 1.07m

 Large pool with ladder and filter pump
\$699 each

Wide Range of Pool Chemicals and Filters - save the trips into town!


Bestway Steel Frame Pool 4 x 2.1 x 0.8m

 Includes filter pump
\$399 each

Strol Raised Garden Bed

\$49⁹⁹ each
 H: 900mm (includes lid) x W: 430mm x L: 650mm

Shanghai 2.6m Umbrella Red

 Limited Stock
 WAS ~~\$149~~
NOW \$99 each

Get your Bait for the holiday period from us + Salt Ice


5kg Salt Ice \$7.99
1kg Free Flow Squid \$16.99
1kg NZ Pilchards \$12.99

Nouveau Market Umbrella 2.7m

 (Navy Blue/Red/Yellow/Green/Orange)
\$149 each

Nouveau Nero Outdoor 3 piece Cafe Setting

\$199 each

HELPING YOU GET THE **JOB DONE**

Supporting our community, we are proud to be Local

436 3114

Cnr Church and Whangārei Heads Rd, Onerahi

SPONSORED CONTENT

MP for Whangārei - Hon Dr Shane Reti



Central Government's Support Helps Onerahi Thrive

Onerahi's vibrant community spirit is matched by a growing partnership with central government agencies, whose involvement has helped shape local progress.

One of the most visible signs of this collaboration is in transport. Waka Kotahi NZ Transport Agency has worked with Whangārei District Council to improve road safety and pedestrian access in and around Onerahi. Projects like upgraded crossings near schools and better signage have made daily travel safer for children, cyclists, and commuters.

Through the Ministry of Education, all schools, including Onerahi Primary, Raurimu Avenue School, Parua Bay and Whangārei Heads School are eligible for a top up to the 2025 Property Maintenance Grant funding to invest in improving school infrastructure.

Relentless focus on teaching the basics brilliantly is delivering results. Education is a core priority for this Government, and the introduced reforms are delivering transformational results for students. Since Term 1, all primary schools have been using structured literacy approaches and the new English curriculum, with phonics checks for new entrants at 20 weeks. The results are already clear. More children are becoming confident readers, with fewer needing extra support. Nationally, 58 per cent of new

entrants are meeting or exceeding expectations, up from 36 per cent, while those exceeding expectations have more than doubled.

Social Services have also seen a boost. The Ministry of Social Development funding youth programmes, mental health initiatives and employment training. Young people now have access to job coaching, work seminars and a \$1000 bonus for those who stay off the benefit for more than a year.

The Government has introduced several tourism packages and tourist spending is already up 34 per cent since the last election. The stunning coastal walks surrounding Whangārei Heads, will hopefully attract some of those travellers and their spend at local eateries, shops and local accommodation, will be most welcome.

Nationwide \$7billion worth of infrastructure projects are getting underway before Christmas. These projects include new roads, hospitals, schools and courts. Not only will these projects, when completed, make all Kiwis better off, this investment will support those in and around the construction sector by creating thousands of jobs across the country.

Economic growth is great for everyday New Zealanders. More and higher paying jobs help keep local businesses open and allow Government to invest in the things that kiwis care about - making everyone better off.

As we approach the festive season, I extend my warmest wishes to all in our community. Wishing you and your families a safe and happy summer.



What's on at Whangārei Choral

Do you love to sing? Whether you're an experienced vocalist or simply enjoy singing for fun, Whangārei Choral choir welcomes everyone - no audition or music-reading skills required!



MOZART'S CORONATION MASS K317
 WITH CHRISTMAS CAROLS, MUSICAL THEATRE AND MORE...
 Conductor: Sarah Kent-Whittles
 Pianist: Roger McClean
 Liara Callan Emerlea Soloists Rishi Iyer Matthew Brereton
 Saturday 6 December 2.30 pm
 Old Library 7 Rust Avenue, Whangārei
 Tickets may be purchased at the door. E-tickets available.
 Waged: \$25, Unwaged: \$20, Students: \$10 Children 12 and under: Free

They sing a wide range of songs from traditional classical choral works through to musical theatre and modern songs. The group rehearses at 7 pm on Monday evenings at St Johns Golden Church, 149 Kamo Road. See the back page for contact details. Or just turn up on a Monday evening.



HON DR SHANE RETI OSM
MP for Whangārei
Working together
 P | 09 438 9992
 A | 105 Cameron Street, Whangārei
 E | shane.reti@parliament.govt.nz
 W | shanereti.national.org.nz

Councillor Amy Macdonald, Northland Regional Council

Kia ora Koutou,

Thank you so much for your ongoing support. It's a real privilege to be re-elected to represent you at the Northland Regional Council. Election periods are always busy and full of energy - I really appreciated the opportunity to attend so many community meetings and hear directly from people about their concerns, ideas, and aspirations.



I'm proud of the work the NRC has been doing, and I'm always open to feedback on how we can do better. Heading into this new term, I'm carrying with me a wide range of insights from individuals and groups across our region, and I'll be keeping those front of mind as we move forward.

As I write this update, we've just been officially sworn in. I'm pleased to share that Cr Pita Tipene has been elected as our new Chair, and Cr Jack Crow as Deputy Chair. Both bring deep experience, strong connections, and a real commitment to serving our region. I'm confident they'll lead us well and I'm looking forward to working alongside them both.

With summer approaching, it's a busy time for our NRC environmental monitoring teams. They're starting a range of seasonal programmes, including coastal water quality

monitoring and biosecurity surveillance for key marine and freshwater pests.

We're seeing fantastic results from many of our community-led environmental initiatives such as Kiwi Coast, Backyard Kiwi, Predator Free 2050, and Predator Free Onerahi. These programmes are delivering real impact, so I'll be working to ensure our new team of councillors understands the value and efficiency of these community-led models. They offer a powerful way to reinvest NRC rates directly into local communities, achieving environmental outcomes in a cost-effective and collaborative way.

I'm always happy to hear from you, please just get in touch - amym@nrc.govt.nz, or find me on facebook: Amy Macdonald - NRC Councillor.

To report pollution and environmental incidents call the 24/7 environmental hotline: 0800 504 639

Disclaimer - this is my personal opinion and not that of the Northland Regional Council

Our new elected councillors

The Whangārei District turned out to vote in good numbers this year, with a 45.5% response rate, including an outstanding 60.6% voter turnout in the Whangārei Heads Ward (one of the highest in the country). The Mayor's Message on page 9 outlines the elected members' changes to the district council. At the Northland Regional Council, the new councillors are Colin (Toss) Kitchen (Bay of Islands-Whangaroa), John Hunt (Coastal South) and Pita Tipene and Arama Morunga (both Te Raki Māori Constituency). Re-elected to council are Amy Macdonald (Coastal Central), Joe Carr (Far North), John Blackwell (Kaipara), Jack Crow (Whangārei Central) and Geoff Crawford (Mid North). Councillors elected Pita Tipene as their new chair, with Jack Crow as his deputy.

SPONSORED CONTENT

IT tips for a relaxed Christmas

The festive season is a time for family, fun, and a little bit of online chaos. As we gear up for Christmas, it's also prime time for cyber scams, tech mishaps, and digital overload. Here are five IT tips to help you stay safe and stress-free:

- 1. Watch out for scams:** Online shopping and delivery scams spike during the holidays. Be cautious with emails or texts that ask you to click links or update payment details—especially if they seem urgent. Always go directly to the retailer's website instead.
- 2. Back it up:** Taking a lot of photos and videos? Make sure your devices are backed up, via the cloud or an external drive. Nothing ruins a holiday like losing precious memories.
- 3. Secure your Wi-Fi:** If you have family visiting, you might be handing out your Wi-Fi password. Consider setting up a guest network to keep your main devices secure.
- 4. Digital detox:** Don't forget to take a break from screens. Remember face-to-face communications are so much better when reconnection to one another. Schedule some offline fun with the family.
- 5. Update before the break:** Get those system and security updates done before the holiday starts, as no one wants to spend Christmas Day waiting on a Windows update!

Most importantly, stay safe, enjoy the festivities; and if in doubt, ask your friendly IT professional for help. Merry Christmas and happy holidays.

Bream Head/Te Whara CONSERVATION TRUST



The Bream Head Conservation Trust would like to recognise the contribution of Onerahi resident, Grant Stevens.

Grant is one of the Trust's most dedicated volunteers. His journey started on a trap line and now includes setting up pest monitoring stations, and cameras to capture the amazing wildlife thriving in the reserve.

Grant says he treasures his time in the bush "It keeps me fit and doing a trap line is a great opportunity to have a chat with a friend when one comes along"

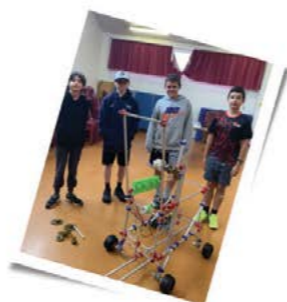
After six years of volunteering, Grant has witnessed some fantastic changes. Birdlife is thriving, with more species present and memorable sights like swarms of tui and little families of morepork making the trees their home. Grant's biggest concern is the grey-faced petrel nesting site at the Old Woman, one of the rare mainland breeding spots. The birds' nesting burrows are threatened by stoats which are notoriously hard to kill, but he's hopeful for the new generation of petrels this year.

For Grant, it's all about making a difference, enjoying good company, and indulging his love for nature. His commitment shows how much positive impact hands-on conservation can create and we're very appreciative of his contribution.

Tēnā koe Grant



YEAR 7/8 2026 Enrolments



The Parua Bay School Board invites Out of Zone Enrolment applications from parents/caregivers who wish to enrol their children at Year 7/8 for 2026

We offer an extensive range of opportunities to our intermediate students



Whanau Captains
Sports Captains
Music Rock Band
Epro8 Club
Coding Club
Debating
Camps
Leadership Programme

Senior Ball
Scuba
Hiking
Kayaking
Snorkeling
Sailing
Surfing
AIMS Games



To find out more about our intermediate programme contact: kate.fortune@paruabay.school.nz

(09) 436 5814

www.paruabay.school.nz



- COMPUTER FAILURE
- REMOTE ACCESS
- EMAIL TROUBLE
- NETWORKING

OR JUST SOME FRIENDLY ADVICE

P 09 4388 834

E vince@cocurullo.co.nz

W www.cocurullo.co.nz



north travel
experience exceptional

We wish you an EXCEPTIONAL festive season

www.northtravel.co.nz
0800 803 007 | hello@northtravel.co.nz

Preparing for medical intervention

The purpose of a personal care and welfare Enduring Power of Attorney (EPA)

If you have an accident, serious illness or mental incapacity and become unable to make or communicate personal care or welfare decisions, a personal care and welfare EPA can be activated. An EPA does not replace anyone that you've chosen as executor or beneficiary in your will. Your EPA is separate from your will. When you die, the EPA has no further authority and your will takes effect instead. A personal care and welfare EPA is about your health, wellbeing and enjoyment of life. It may include, for example:

- where you do and do not want to live
- who you will live with
- who your carers are
- your day-to-day medical treatment or therapy choices
- your plan for the ongoing care of a relative living with you (who you're the carer for)
- your preference to go into a care facility that allows residents to bring their pets
- what to do with your cat if you cannot have it with you, etc.

You must get legal advice when creating your personal care and welfare EPA. You will be charged a fee for this. If you make some decisions before you get legal advice it should reduce your legal costs.

Think about what your needs will be if your EPA gets activated – rather than your situation now:

- Who do you want to be your attorney, and do you want a back-up attorney?
- Who must your attorney consult with (other than you), when they make decisions?
- What instructions and restrictions will you include?

The only way to activate this EPA is if a suitably qualified medical practitioner assesses you, and decides you do not have the mental capacity to make decisions about your personal care and welfare, or to communicate your decisions.

Once it's activated, you (or your attorney) need to tell your care provider that you have an activated EPA for personal care and welfare. Give your attorney's contact details to your care provider. Note that the attorney cannot give or refuse consent to standard lifesaving medical treatment or surgery. This is ultimately a medical decision and the attorney has no legal authority on such matters. The attorney also cannot give consent to things such as marriage, divorce or adoption etc.

If you recover and you're assessed as having regained your mental capacity (by a suitably qualified medical practitioner),



you can change, replace or cancel (revoke) your EPA by giving written notice to your attorney and successor attorney. Decide now, while you are still able, as to what's appropriate for you. You can get the EPA form from the Ministry of Justice website or ask for a copy from wherever you get your EPA legal advice. Use the form labelled 'EPA Personal Care and Welfare'.

Based on information provided by the New Zealand Government website www.govt.nz

Note this water notice

Whangārei District Council has advised residents to tip away the first cup of drinking water from the tap in the morning. This is recommended for all households, businesses, community buildings and schools - whether on public or private water supplies.



When water is left to stand for some time, such as overnight or longer, it can dissolve small amounts of metals, including copper and lead, from a building's pipework and fittings. It is safer to not drink this first cup of water. Only the cold water tap needs flushing, as hot water is more likely to contain higher levels of dissolved metals and should not be used for drinking or cooking anyway. This practice is a precautionary measure, as the health risk from occasional exposure is small, but a long-term buildup of heavy metals in the body can cause health problems, especially for infants, children, and pregnant women.

Newer, better-quality fittings are likely to contain less harmful metals.

Enjoy the outdoors this summer

“With summer approaching, and longer days, people want to get out and about and enjoy Northland’s great outdoors,” says Detective Sergeant Overton from our Northland Police. “People need to make sure they have adequate clothing, navigation tools, and know what the weather forecast is. They should also ideally not go alone, or should tell someone else where they are going, have two forms of communication and carry a GPS.”

Sun safety

To be sun safe, you should use a combination of methods: wear protective clothing like a long-sleeved shirt, pants, and a wide-brimmed hat; apply broad-spectrum sunscreen with an SPF of 30 or higher to all exposed skin and reapply every two hours; wear sunglasses that block UV rays; and seek shade or limit your time in the sun, especially during peak hours (10 am to 4pm).

Water Safety

safeswim.org.nz enables people to make informed decisions about when and where to swim by providing access to real-time information on water quality, swimming conditions, and safety hazards for popular swimming locations. Please use the site this summer to check before you venture out. The website monitors many swimming sites around the country and in Whangārei.

Know how to float

If you don't know how to float well, practice or get some lessons before you head to the beach - being able to float is

a key skill. Floating allows you to calm yourself and to keep your airways clear of water. It is also the first thing to do if you get caught in a rip. Visit the website Drowning Prevention Auckland for tips.

Stay safe while swimming

Visit the Surf Life Saving New Zealand website to learn about staying safe at the beach. Skills they focus on include knowing how to float, knowing how to find the safest places to swim in the sea, and knowing how to get help when you need it.

Always check the depth of the water before jumping into a river or waterhole, even if you visit the same spot regularly. For more information on staying safe in rivers, go to the Water Safety New Zealand website.

Catch limits

Recreational fishing is governed by rules. Please check them before heading out, as they are strictly enforced and the penalties substantial. Use the free NZ Fishing Rules mobile app developed by the Ministry for Fisheries. It is available for both Apple and Android devices. The app works even when you don't have cell phone coverage. You can download it by texting to 9889 the word 'app'.

Scallop season - CLOSED!

The Northland scallop fishery is currently closed to both recreational and commercial fishing. The closure was put in place to help the depleted scallop population recover because there are sustainability concerns.



Onerahi Pharmacy



116 Onerahi Road
Phone: 09 436 0567
Find us on FaceBook 



care + advice **Unichem**
Your local health professional



PEPE'S DAIRY

Season's Greetings & Happy New Year to All

Mon-Fri: 7am - 8pm **OPEN 7 DAYS** Sat-Sun & Public Holidays: 8am-8pm

Onerahi Shopping Centre • 436 3600



"Providing for the healthy bodies and healthy minds of our kiwi kids"

PH 436 3085
www.kiwikidsele.co.nz

4 Waimahanga Rd, Onerahi

BLINDS, SHUTTERS & CURTAINS

Whangārei, Bream Bay & Districts



Rollers, Verticals, Venetians, Curtains, Shutters, Outdoor Blinds

Ph Gail 0211 95 35 35
www.blindsandshutters.co.nz



Do not drink and drive

Your dog will never understand why you left them and never came home



Ph. 438 2644 (24 Hours)
Newberrys Funeral Home
Corner of Kamo Rd & Moody Ave, Kamo
admin@newberrys.co.nz
www.newberrys.co.nz



Over 900 trees and counting!

The Onerahi CoastLine Action Group (OCLAG) has planted over 900 trees in pocket reserves around Onerahi this season! Spaces that were once a jungle of weeds are gradually being transformed by our team who remove the weeds, prepare the ground and plant suitable natives, then maintain the areas until the trees are well established and can look after themselves.



Members of the OCLAG team working around Onerahi

We can help you, if you have been trying to tidy a local reserve near you. If you'd like to help us, but find weeding and digging too hard, you might be able to propagate plants for us.

Check out our stall at the Onerahi Twilight Market on Wednesday 17 December, from 4pm. We're fund-raising for more trees so you'll find some plants (native and exotic) suitable for your garden; knick-knacks and

goodies you didn't know you couldn't do without!

OCLAG would like to acknowledge the support of Trees That Count, Whangārei District Council, Northland Regional Council, Onerahi Airport and the Onerahi Community Association, our members and the wider Onerahi Community. Thanks for helping to make this a great place!

Contact Brian or Valerie at (09) 436 3660

Kiwi coming back to Onerahi's Backyard

The kiwi population at the Whangārei Heads has grown from 80 in 2001 to over 1300, and now some of them are moving from Parua Bay back to Onerahi.

A female kiwi named "Te Motu Manu Hine" was released at Parua Bay in 2023. She had a small radio transmitter attached and we were able to follow her walking north all the way to Mt Tiger Road where she spent time in the pampas. She then walked even further to near the Money Factory on Awaroa River Road – just north of Onerahi. She has spent the last 2 years well settled in a valley of pines. She has grown from 1950g to 2300g and her bill has stopped growing at 138.4mm, showing that she is now a fully grown adult. If she has found a mate they will stay together in the same area for the next 50 years producing 2 to 3 chicks per year- unless a dog finds them.

Another kiwi called "Kim" spent 6 months in a small area of a pine forest at Parua Bay before going to Tamaterau and then on to Waikaraka village. She had grown to 2500g and a bill of 131mm so is getting close to fully grown.

As long as we control our dogs these kiwi will re-establish kiwi populations that have been missing for many years.

Summarised from Todd Hamilton, Backyard Kiwi Project Manager | www.backyardkiwi.org.nz



Kim. Oct 2025



Te Motu Manu Hine. Nov 2023

Measles!

Measles is active in New Zealand this summer. Please ensure everyone in your family is up to date with their vaccinations. If you have any concerns, please speak to your pharmacist or doctor.



a graceful undertaking

THE FREEDOM TO DO IT YOUR WAY

A fresh approach to after-death care and funeral arranging

Contemporary and natural solutions, offering choice, facilitating creative, personalised family led funerals that truly reflect the uniqueness of every life.

Phone 09 988 9503 | 7 Dickson Road, Whangārei
info@graceful.co.nz | www.graceful.co.nz

Proud to be independent and locally owned

Lowest pest numbers in the district!



Three generations of the Morgan family - grandfather, son, and grandson - were recently out on the Waimahanga Track, checking traps and helping control pests as part of Predator Free Onerahi.

"Heaps of tūī, grey warbler, and fantail were seen and heard, wētā in some of the wētā hotels, and amazing weeding and re-veg from the Waimahanga Track Action team. Looking great.

Pretty lucky to have this on our doorstep," said volunteer Dai Morgan. Their work captures the spirit of local conservation – community, connection, and care for our place. And it's paying off.

According to the latest Tiakina Whangārei pest monitoring, Onerahi recorded some of the lowest pest numbers in the

district. Along the Waimahanga and Waverley tracks, very few possums or rodents were detected, and no rats were found at all on the Beach Road line – an outstanding result.

The Waimahanga Track Action Group (WTAG) began with a handful of volunteers and now coordinates six predator control lines across Onerahi and the Waimahanga Track. The group has two arms: pest control, keeping possums, rats, and mice in check; and weed control, tackling invasive plants and re-vegetating native habitats. Volunteers give a few hours when they can, enjoy being outdoors, and take pride in the results of their mahi. While the latest numbers are encouraging, some areas show pest activity beyond the Beach Road buffer, so keeping the momentum going is vital.

If you enjoy being outdoors, love local wildlife, or want to do something positive for the environment, join us. Training and gear are provided, and you can help as often as it suits. To find out more or join our Pest or Weed Control teams, contact us via tiakinaWhangarei@nrc.govt.nz.

It's a great way to meet neighbours, learn about local ecology, and protect the native species returning to our backyards. Together, we're making a real difference – one trap, one weed, and one wētā hotel at a time.

The WTAG are proudly supported by Tiakina Whangārei and NRC.



Moth plant season

Moth plant pods are easy to see once you get used to looking for them, then you learn to see the vine too. Annihilate them this season!

Physical control: Pull or dig out the roots and cut the root about 5cm underground. If seed pods have formed, seal them up in a bag with a cup of water and leave them in a sunny place for three months before composting, or throw them in the rubbish.

Herbicide control: Stump treat: Cut vines close to ground level and immediately treat the cut stumps with a small amount of ONE of the following: 200mls Banvine® per 1 litre water, or 100mls Brushkiller per 1 litre water, or Metsulfuron gel also known as 'Metgel', or Picloram gel

Moth plant is a fast-growing vine that can reach 10m tall. The twining stems release a milky sap when they're broken. Wear gloves when controlling moth plant to avoid skin irritation. Sample sachets of Metsulfuron-methyl are available from Northland Regional Council (NRC) offices for landowners. Please call 0800 002 004 to check availability at your nearest NRC office.

PestControlHub



Can you imagine a Pest Free Onerahi?

Tiakina Whangārei can support you in removing pest plants and animals from your backyard and urban community spaces. Get in touch to find out how you can be part of the change.

E: tiakinawhangarei@nrc.govt.nz



Proudly supported by



Faith for today

A sliver of comfort to face the unknown

The Example of Bethlehem

At my age, coming up to 85 years young, I have many wonderful Christmas memories going back over the years. I do remember once our eldest daughter Helen, asking "Dad, when are we going to give Jesus His present? I thought it was His birthday?" Strange isn't it, that we give gifts to others on their birthdays, but not to the one that we celebrate. How precious and thoughtful are some of the questions that our children ask!

Many years ago, the whole world was eagerly awaiting the news of a royal birth. When the child of Prince Charles and Princess Diana was born, the announcement was flashed around the world. By the miracle of modern communication, the infant's picture appeared in newspapers and magazines everywhere. Word of the arrival led to national celebration and received worldwide attention. In addition, of course, the baby was given all the comforts befitting royalty.

What a contrast to the royal baby born long ago in a Bethlehem stable! Jesus' parents had no plush accommodations reserved at the 'Jerusalem Hilton'. No crowds of reporters competing to break the news that the

Son of God had become incarnate (in human form). No television cameras focused on His first public appearance, and Israel had prepared no national festivities to His honour. When God's Son came, He was born into a poor peasant family in a tiny village in a remote corner of The Roman Empire. Even so, He indeed was a royal child.

In this age of extravagance, Christ's humble birth holds a lesson for all of us. An event doesn't have to attract the media to be worthwhile. International acclaim does not guarantee value or meaning. Maybe it's time that we go back to His example this Christmas, and let God's Word, the Holy Bible, give life to its deepest meaning. "Give your all to Christ, He gave His all for you."

Contributed by Onerahi retired pastor, Ron Brewer



Venues available for hire in Onerahi, Parua Bay and Whangārei Heads area		
Whangārei Cruising Club	Clare O'Donnell	wccinc@extra.co.nz 09 438 9043
Onerahi Community Hall & Community House	Heidyn Harrison	onerahicomunity@gmail.com 022 085 8286
Onerahi Bowling Club	Roger Kerr-Davis	027 390 7185
Onerahi Rugby Club	Fiona Raymond-Paikea	onerahirugby@yahoo.com. The Onerahi Rugby Club has had a recent facelift and renovation, and is available to other clubs and sports groups to use - please call us on 021 228 5982.
Onerahi Soccer Club	Fiona Ellis	onerahifootballclub@outlook.co.nz
Onerahi Yacht Club	Dave Cochran	024 438 8911
Hope Church	Secretary	09 438 1667
Raurimu School Hall	School Office	09 436 0820 Ext. 2
St. Stephen's Church Hall	Paul Doherty	021 189 4797 or 09 436 0207
Tamaterau Hall	Jane Kippenberger	021 463 330
Parua Bay Community Centre	Richard Burgoyne	bookings@paruabaycommunitycentre.org.nz
McLeod Bay Hall	Jos	027 315 6490
Taurikura Hall	Meg Mclsaac	09 434 0096
Whangārei District Council Hotline: 0800 932 463		
Onerahi Police (09) 436 0222		

EMERGENCY NUMBERS	
Aviva	For free 24/7 support line, call 0800 AVIVA NOW (0800 28482 669)
Elder Abuse Helpline	0800 32 668 65 Open 24 hrs text: 5032, email: support@elderabuse.nz
Family violence info	0800 456 450
Gandhi Nivas	Supporting men to be free from violence 0800 426 344
Hey Bro helpline	Supporting men to be free from violence 0800 HeyBro (439 276)
Need to talk?	Free call or text: 1737 for mental health support from a trained counsellor
Oranga Tamariki line: for concerns about children and young people	0508 326 459, email: contact@ot.govt.nz1737
Safe to Talk sexual harm helpline	0800 044334, text: 4334, email: support@safetotalk.nz
Sensitive Claims ACC	0800 735 566
Shakti - for migrant and refugee women	0800 742 584 Open 24 hrs
Shine domestic abuse services	0508 744 633 Open 24 hrs Live webchat is also available
Rape Crisis	0800 88 33 00
Victim Support - support for men and women	0800 842 846 Open 24 hrs
Women's Refuge crisis line	0800 733 843 Open 24 hrs
Youthline	0800 376 633, free text: 234, email: talk@youthline.co.nz

ONERAHI COMMUNITY CHURCH

Sundays 10am Raurimu Ave School Hall

... the name of Jesus ...
there is no other name ...
by which we must be saved.

Acts 4:10-12

Contact: hello.onecc@gmail.com

LOCAL NEWS

Whangārei Aquatic Centre upgrade complete

Over recent months the centre has received a total makeover - with structures, water and electrical systems and surfaces renewed to improve safety and attractiveness. Just in time for summer!

New Northland water organisation approved by DIA

The Department of Internal Affairs has approved the establishment of the new council-controlled water organisation for Whangārei, Far North and Kaipara district councils, which will be responsible for delivering drinking water and wastewater services across Te Tai Tokerau.

Implementation will be carried out in three phases:

1. the scoping and preparation phase, running from now until June 2026
2. the establishment and transition phase, from June 2026 to July 2027
3. the go-live and operational phase, commencing in July 2027.

Based on a Whangārei District Council press release

Have you been offered cheap railway sleepers?

About 180 railway sleepers have been stolen from across Whangārei in recent months. Senior sergeant Shane Pilmer said "These reports have been made from various yards across the region. We suspect that these sleepers are likely being sold off for financial gain, and it's likely that these are being sold to unsuspecting members of the community."

"We want to hear from anyone who might have been offered sleepers at a cheap price in the past couple of months," he said.

Northport granted consent for major expansion by Environment Court

In early October the Environment Court granted consent for a major expansion of Northport, after the company committed to new conditions to mitigate the project's adverse effects.

Northport's plans include almost 12-hectares of harbour reclamation, a 250-metre wharf extension, and 1.7 million cubic metres of dredging - enabling a new container terminal to be built. Updated consent conditions include Northport committing \$500,000, over a nine year period, for: an integrated marine planning initiative, monitoring of shore birds, surveying and relocation of native lizards, improvement works to Mair Road and Marsden Bay Drive and upgrading a playground.

Based on an RNZ article by Lucy Xia published 4 October 2025

Rāhui at Abbey Caves

A rāhui was placed on the Abbey Caves network by Ngāti Kahu o Torongare and Whangārei Hapū following the tragic death of a student in May 2023. Initially intended to be in place for a month, the rāhui has been extended indefinitely. While the wider Abbey Caves Reserve is now open, the caves themselves remain closed.

Reyburn house invites you to
THE CHRISTMAS CRAFTS MARKET | 9am to 3pm

- Sunday 30 November
- Sunday 14 December
- Sunday 21 December 2025

Stall bookings: thewhangareicraftsmarket@gmail.com

TOWN BASIN CARNIVAL
Arts • Crafts • Culture • Food
7 February 2026 | 10am to 4pm
events@reyburnhouse.co.nz

OYC
ONERAHI YACHT CLUB

HALL FOR HIRE

Our waterfront hall has capacity for over 100 people and is ideal for • Birthdays & celebrations
• Corporate events • Weddings & special occasions

Email: oycsailing@hotmail.com

HOPE ONERAHI
PRESBYTERIAN CHURCH
135 Onerahi Road • Office: 438 1667

Minister: Howard Carter 027 750 8602

December Sunday Worship @ 9.30am. All Welcome!

January Sunday Worship is at 1 Hunt Street, Whangarei - 10am

Mainly Music in the Church Hall - Every Wednesday 10am (during school term). By donation. Contact Nancy Dodds - 436 1444

Sit Fit \$5 - Monday 10.30am - Hope Onerahi Church Hall

'Use it or Lose it' - Contact Bett Harvey 021 208 6719

DOUGLAS ROOFING

Call Douglas
Roofing for your
FREE,
no obligation
quote

• New Roofs • Re-Roofs • Roof Repairs • Spouting

027 892 7770 • www.douglasroofing.co.nz
Email: admin@douglasroofing.co.nz

Lawn Mowing by your Local Expert

- RESIDENTIAL MOWING
- COMMERCIAL MOWING
- HEDGES & PRUNING
- GARDENING / SPRAYING
- SECTION CLEAN-UPS
- RUBBISH REMOVAL
- GUTTER CLEANING
- ALL WORK GUARANTEED

Jim's Mowing

Phone 0800 454 654
BOOK ONLINE at www.jimsmowing.co.nz
Fully Insured and Security Checked for your peace of mind

Akongia tētahi
mea hou
Learn
something new

CEW
COMMUNITY EDUCATION WHANGAREI

www.cew.ac.nz
027 428 5142
09 435 0889

Angela Bilyard-Smith (N.Z.C.A.D.)
ARCHITECTURAL DESIGNER
NZCAD LBP
Parua Bay Whangarei

RENOVATION + NEW BUILD
FROM BEGINNING TO COMPLETION
021 211 1579
smithbilyard@gmail.com

Joy at the BAY
HAIR SALON

Mon 9am - 4pm
Tue 9am - 5pm
Wed 9am - 7pm
Thurs 9am - 5pm
Fri 9am - 6pm

1379 Whangārei Heads Rd. Parua Bay
Call for an appointment or book online
www.joyatthebay.com
Phone 436 5002

Citizens Advice Bureau

Not sure?
Ask us.

We provide free, confidential and independent information and advice to help you understand your rights and responsibilities.

154 Bank Street, Whangārei
09 438 8046 • whangarei@cab.org.nz
www.cab.org.nz

UPCOMING EVENTS

Now till Christmas eve 24 December - Whangārei Christmas Festival

A festival of lights, music and fun - check out the Whangārei District Council website for details.

Sun 30 November, 14 December and 21 December - Christmas Markets 9am to 3pm - Stall bookings: theWhangāreicraftsmarket@gmail.com. Support local artisans.

5 December - Full Moon Pizza 'Jam'

Join St Stephen's Church for an evening of food and music from 6 to 8pm. Bring an instrument to jam, or perform to a friendly local crowd.

5 and 6 December - Free Christmas Wrapping

The Volunteering Northland Christmas Wrapping & Community Pop-Up gift wrapping services available 11am - 3pm in the CBD with music, theatre and dance performances every day at noon, as well as a Christmas Karaoke session.

6 December - Next Generations Boxing

Amateur Boxing Showcase - a whānau-friendly afternoon celebrating local rangatahi 1-5pm (\$5 children under 13; \$10 Adults) followed by the Main Event Heavyweight Title - a professional and corporate fight night from 6.30pm (\$20 for Whānau Zone; \$45 for GA area - R18; \$2000 for Premium Tables; \$1500 for VIP Tables) at McKay Stadium

6 December - Whangārei Choral Concert

Join the Whangārei Choral Society to hear a selection of music, including Mozart Coronation Mass and Christmas music, for spirit and joy. Starts 2.30pm at the Old Library, Rust Avenue.

6 and 7 December - WHAT Art exhibition

Members of the Whangārei Heads Arts Trail will showcase some of their most amazing art at the cruising club at kissing point.

12 and 13 December - Free Christmas Wrapping (see 5 Dec)

14 till 22 December - Hanukkah (Jewish Festival of Lights)

15 December - Community Carol Sing

Join the Whangārei Choral Society to sing carols at St John's Golden Church, 7.30pm.

17 December - Onerahi Twilight Market

At the Onerahi Hall, from 4-7pm (setup for stall holders from 3pm). Fundraising groups (eg schools, sports) are welcome for free. Call Jenny to arrange a stall (09) 436 0009 or just turn up!

24 December - Christmas Eve Community Carols

Outside St Stephen's Church - carols with a Kiwi twist?! (weather permitting) at 5pm.

25 December - Christmas Day (birth of Jesus Christ) public holiday

26 December - Boxing Day public holiday

1 and 2 January - New Year's Day public holiday

January to March - Whangārei's Endless Summer Festival

Check out the Whangārei District Council website for details closer to the time.

January 17 - Z Manu World Champs qualifier event

The competition has qualifying events across nine cities before the Grand Final in

Auckland on Saturday 14 March 2026, as part of Moana Auckland, New Zealand's Ocean Festival. Those who win their divisions in Whangārei will gain automatic qualification for the Grand Final in Auckland!

6 February - Waitangi Day public holiday

7 February - Town Basin Carnival. Arts, crafts, culture and food. 10am to 4pm. events@reyburnhouse.co.nz

13 February - Full Moon Pizza 'Jam'

Join St Stephen's Church for an evening of food and music from 6 to 8pm. Bring an instrument to jam, or perform to a friendly local crowd.

17 February till 3 March - Chinese New Year/Lunar New Year

20 February - Boost Brokers Golf for Good in support of I Have a Dream

To register and learn more, visit - Boost Brokers Golf for Good - to be held at The Pines Golf Club, Whangārei Heads.

March - Northland Fritter Festival (dates to be confirmed)

1 to 31 March - Classic 100 in support of I Have a Dream

A month-long challenge to walk or run 100 kilometres and fundraise for I Have a Dream. Learn more at Classic 100 in support of I Have a Dream.

Regular events are on Pg 2



Want your free community or sporting activities highlighted here? Notice something is still advertised here but is no longer offered?

Email: onerahiorbitmagazine@gmail.com.

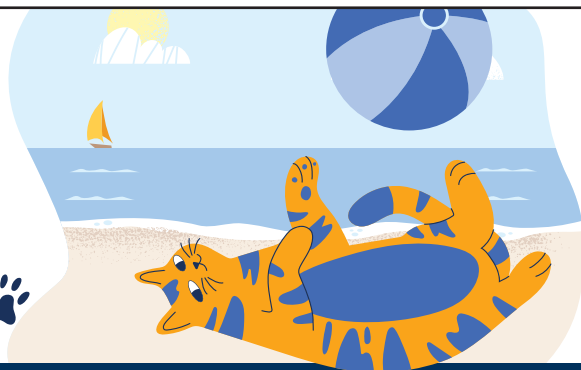
Onerahi Orbit is not responsible for any events listed here that are cancelled for any reason. Please check with local event organisers for confirmation.

SPRING TIDE TABLES

Download your own copy of tides tables for Northland at <https://www.nrc.govt.nz/resource-library-summary/publications/coast/northland-tide-tables/>

Planning a summer escape? Don't forget to arrange a luxurious holiday for your cat at **Delorraine Cattery**, where they'll be pampered in a bespoke, serene setting. Our exclusive cat hotel offers individual suites, plenty of play, and relaxation time in a safe, comfortable environment. Spaces are filling up fast, so book now to secure your cat's spot! Contact us today and give your cat the *purr-fect* holiday at

Delorraine Cattery 



DELORRAINECATTERY.COM • ENQUIRY@DELORRAINECATTERY.COM • 50 KONINI STREET • RIVERSIDE • WHANGAREI

OPEN 7 DAYS BY APPOINTMENT • 9 -10.30AM & 4.30 - 6PM • CLOSED SUNDAY MORNING • VANESSA WILSON • 021 46 36 16