

# Onerahi Orbit

Free to you from the Onerahi Community Association

June 2023

Covering Onerahi, Parua Bay, Pataua and Whangārei Heads



**RayWhite**

027 536 0369  
joanne.stevens@raywhite.com  
Licensed Real Estate Salesperson (REAA2008)

*let's go with Jo*  
**Joanne Stevens**

# Haere mai,

## Ngā mihi o te tau hou : Happy Matariki!

Looking forward to your whānau's Matariki celebrations? In this edition (page 4) we cover off some of the traditional activities to give you some ideas on what to do to celebrate this time of aroha. There will also be heaps of events available, so keep an eye out for the Matariki Festival programmes which will be available from shops and the council closer to the time.

What a summer we have had. Rain, rain and more rain. This summer was hard on our natural environment. Why don't you help with the recovery? Whangārei District Council's Pohutukawa Coast programme is running from 10 June - this is an opportunity for each household to pick up two native plants for free, whether you live in a rural area, or are a city dweller, rent or own. If you are picking up for multiple properties (such as doing the delivery run for your street!) please take along rates statements as proof. Check out the back page of this magazine for the details.

*Ngā mihi from the Orbit team.*

# Contents

President's Report . . . . .	3
Colour in the drawing . . . . .	4
About Matariki . . . . .	4
Parua Bay Residents and Ratepayers Association . . . . .	5
Community Champions . . . . .	6
Introducing WDC Councillor Olsen . . . . .	7
Rescue Helicopter relocation . . . . .	7
Sherwood Carpark resealing . . . . .	7
Mayor's Message . . . . .	8
MP for Whangārei - Emily Henderson . . . . .	9
MP Dr Shane Reti . . . . .	10
Invasive seaweed warning . . . . .	10
Waimahanga Track action forges ahead . . . . .	11
Northland Regional Councillor Amy McDonald . . . . .	12
What is chat GPT? . . . . .	13
Australian Outback Adventures Part 5 . . . . .	14
Fixing the old Municipal Building . . . . .	15
Oruku Cantre back on the table . . . . .	15
Onerahi Football - It's not too late . . . . .	16
Onerahi School Report . . . . .	16 - 17
The Pines Club - Juniors Report . . . . .	18
Raurimu Avenue School . . . . .	19
Fighting cabin fever . . . . .	20
Backyard Kiwi release . . . . .	21
Friends of Matakana Island . . . . .	22
Venues available for hire . . . . .	23
Upcoming and regular events . . . . .	24

**If you are a victim of family violence or in a relationship that makes you fearful about your own or anyone else's safety, seek help as soon as possible. You have the right to be safe.**

Elder Abuse Helpline	0800 32 668 65 Open 24 hours
Family violence information line	0800 456 450
Gandhi Nivas - supporting men to be free from violence	0800 426 344
Hey Bro helpline - supporting men to be free from violence	0800 HeyBro (439 276)
National network of stopping violence	03 391 0048
Sensitive Claims ACC	0800 735 566
Shakti - for migrant and refugee women	0800 742 584 Open 24 hours
Shine National Helpline	0508 744 633 Open 24 hours
Victim Support - support for men and women victims	0800 842 846 Open 24 hours
Women's Refuge crisis line	0800 733 843 Open 24 hours

### OCA 2022/23 committee members:

- Grant Harrison - President
- Nicki Powell
- Rose Tantau - Treasurer/Administration
- Tarquala Whittaker-Stone
- Wendy Giffin
- Moana Gotty
- Cllr Nick Connop
- Steven Beazley

The Onerahi Orbit is a not-for-profit publication owned by the Onerahi Community Association, that reports the good news in Onerahi, Parua Bay, Pataua, and Whangārei Heads. 4,000 copies are printed by Jeff Oliver Print and distributed by volunteers throughout this area; readership is approximately 12,500. Opinions expressed in signed articles, or in advertisements appearing in the Onerahi Orbit are those of the author and advertiser and do not reflect those of this newsletter nor its publisher. No part of this publication may be reproduced without the prior written permission of the editor, writers, and owners of Onerahi Orbit.

Follow us on Facebook  
[www.facebook.com/onerahiorbit](http://www.facebook.com/onerahiorbit)



Editor: Margie Kent  
Email: [onerahiorbitmagazine@gmail.com](mailto:onerahiorbitmagazine@gmail.com)

Advertising: Megan Lavin-McIsaac 022 641 9786  
Email: [advertising@megatype-publishing.co.nz](mailto:advertising@megatype-publishing.co.nz)

Design: Megan Lavin-McIsaac 022 641 9786  
Email: [graphics@megatype-publishing.co.nz](mailto:graphics@megatype-publishing.co.nz)

Accounts: Rose Tantau 438 5499  
Email: [ccoca@xtra.co.nz](mailto:ccoca@xtra.co.nz)

Deliveries: Allan Westlake 021 437 591



- Cultivate and nurture the interests of the community of Onerahi
- Promote the district
- Assist residents
- Develop and administer facilities

## President's Report

The transition to Autumn has seen a return of unstable weather conditions including more significant rain, wind, and fluctuating temperatures. We at OCA are aware of the increased pressures these and other economic factors place on households within communities. We have had a couple of incidents of upsetting behaviours recently and urge community members to look out for each other. We are blessed with people who always go "the extra mile" within the community. OCA have decided to recognise this with a monthly award of Community Champion. They will be identified, awarded a New World voucher, and recognised via Facebook. To help us with this we would like people to be nominated via a Facebook link or nominated via email [CCOCA@xtra.co.nz](mailto:CCOCA@xtra.co.nz), attention Community Awards Committee.

Recognition of contribution to the community continued with OCA providing a Fish n Chips to the Fire Brigade for their efforts during the Gabrielle storm time and for their work in general. Similarly Jeremy Busck at Dragonfly springs spent countless hours tidying up the storm damage so the public can again experience the environment there. Already schools have been once again making educational visits. OCA recognises this with some fuel vouchers to compensate for fuel used in ensuring the clean-up occurred.

The Onerahi Order of Merit recipients over the past few years will be acknowledged by an Honours Board in the Community Hall. Remembering the contributions to the community of past recipients will help to maintain their legacy. The unveiling of the honours board will be announced via the community Facebook page.

With the AGM approaching OCA is seeking people to stand on the committee. The committee is focussed on connecting to the community; and the monthly meetings allow discussion on things impacting the community. Nomination forms can be obtained from Rose via the OCA email address. ([CCOCA@xtra.co.nz](mailto:CCOCA@xtra.co.nz))

Matariki celebrations are scheduled for July and OCA is planning to coordinate some of the activities within the community for this important time. Schools, pre-schools, church groups and other community groups are all working on their celebration plans.

The Community Led Projects Lead Group have settled on two projects that will, they feel, impact the community the most. Proposals regarding these projects will be out for public consultation in July. The projects include access to a place for tamariki to swim in summer (with a school pool community partnership) and developing a space for community to connect for coffee and chat or just hang out. Discussion and investigation is continuing on other community projects that impact safety or security (like lighting and CCTV cameras) as well as projects that impact our environment.

Be safe and remain aware.

Grant Harrison  
President OCA

## ONERAHI COMMUNITY ASSOCIATION

### ANNUAL GENERAL MEETING

20 June 2023 at the Community Hall starting at 7.30pm

### Secretary



We are looking for a Secretary for the Onerahi Community Association.

### Members



We are looking for Members for the Onerahi Community Association

Questions? Call Rose on 021 157 0980

## The ONERAHI ORBIT also needs your help!

### Sales Person



We are looking for a person to sell advertising for the Orbit.

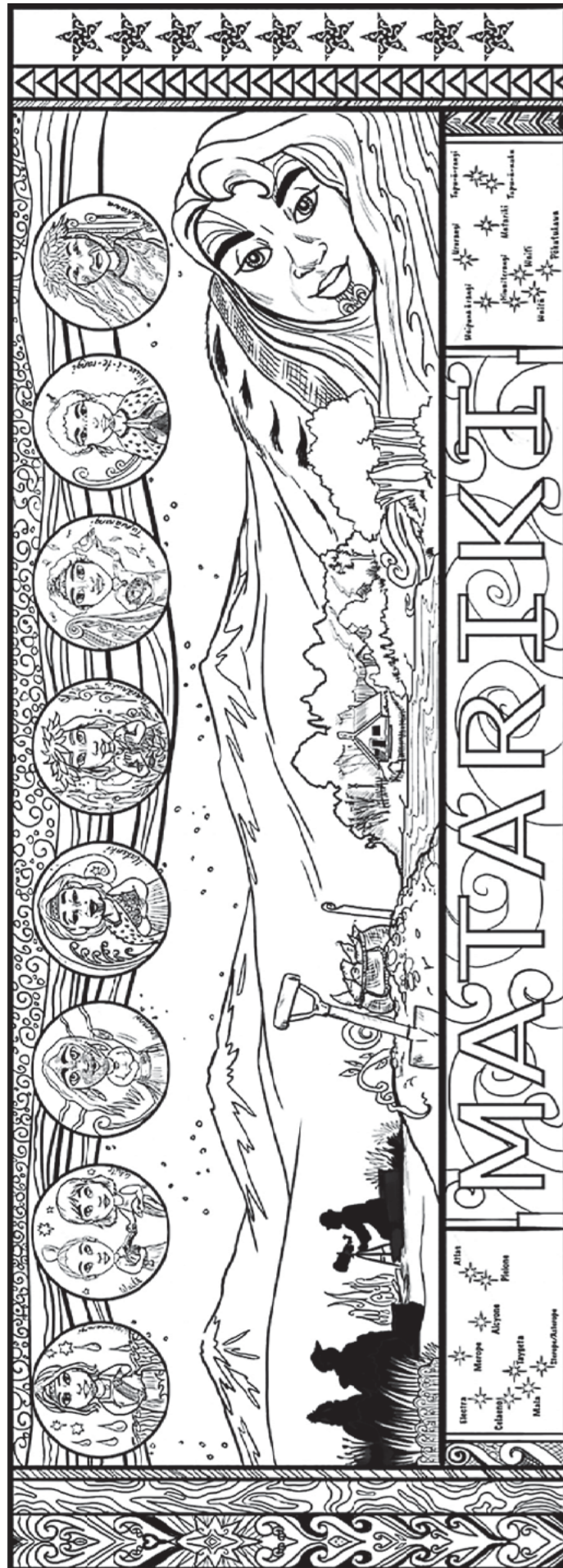
We need a team player who is computer literate, organised and thorough

Call Meg on 022 641 9786

Published in April, June, August, October, and December.

# Colour in the drawing **About Matariki**

Use felt tip pens to colour this drawing by Rebecca Gibbs



The rise of Matariki in the winter skies above Aotearoa is an important time in the Māori calendar, as it signifies the start of the Māori new year. For Māori, astronomy was interwoven into all facets of life. Experts would observe the night sky, charting star and planet movements, the relationship of the stars and planets to the moon and sun, while also noting what was happening on the whenua (land) and in the moana (ocean), lakes and awa (rivers). All of these celestial star beings were attributed qualities and named accordingly, and their stories were woven into the history of the people.

Historically, new year celebrations provided the opportunity for whānau to come together to acknowledge the year gone by, prepare and plan for the year ahead; and to celebrate with kai, kōrero, ceremony and entertainment.

Today, everyone in Aotearoa has the opportunity to celebrate, to show respect for the land we live on, and to share and grow together through traditions that continue each year. The Matariki celebration is based on three principles:

### Remembrance

The reappearance of Matariki in the morning sky during mid-winter coincided with a traditional ceremony called 'whāngai i te hautapu.' During this ceremony food was cooked and offered to the different stars of Matariki while karakia were conducted. The first part of this ceremony was dedicated to the dead of the year, honouring those who had died since the last rising of Matariki. The names of the dead were called out during the ceremony and people would weep for their loved ones. One traditional belief states that Matariki carries the dead of the year across the night sky, and upon the return of Matariki in the winter sky, the star cluster is released from its burden. When the names of the deceased were called out, Māori believed the spirits of the dead became stars in the sky.

### Celebrating the present

Following on from the formal 'whāngai i te hautapu' ceremony, Matariki was a period of celebration and festivities. Communities and whānau would gather together to give thanks for all the blessings of the past year, and to reconnect with each other. In addition to feasting, other forms of celebration included music, dance, art and spending time with one another.

### Looking to the future

Matariki was a time where communities and whānau would come together to plan for the impending growing season. They discussed at length their hopes and desires, concerns and fears and they decided how they would approach various activities in the New Year. It was a time of learning, sharing, discussion and decision making. One of the key points of discussion during Matariki was the environment, especially the health of the environment. Māori understood that their lives depended on them maintaining a strong connection to the physical world and caring for nature.

Based on advice from the New Zealand Matariki Advisory Committee



# PBRRA News – from Parua Bay Residents and Ratepayers Association

Kia ora from Parua Bay! We are a voluntary Incorporated Society formed to promote and support the welfare of our local community and make improvements to amenities. We meet monthly to discuss issues in the community, and work on projects including road safety, beautification of the Parua Bay Village and surrounds, and Civil Defence. We also support local projects such as our proposed Skate Park, and new sports field.

A big focus at the moment is the Whangārei District Council Placemaking Plan. This is a 20-30 year plan being developed for Parua Bay. The first round of engagement with the community was held in 2022, to identify what the community saw as important issues for Parua Bay. We have been excited to attend meetings in April/May to view the draft Parua Bay Placemaking Plan. This contains four main areas- Connectivity -Wellbeing- Consolidated Growth - The Environment. Goals have been identified, including road safety, connectivity, community events, sporting facilities,

future urban design, and environmental factors- parks, water, weed-free, kiwi protection etc. This also includes ways to extend our connectivity with Onerahi and Whangārei City by way of safer roads, future use of public transport, and cycle ways. You can view the Placemaking Plan on [www.wdc.govt.nz/Placemaking](http://www.wdc.govt.nz/Placemaking). If you have connections with Parua Bay, ie live, work or play there, we urge you to have a say in how Parua Bay will be shaped going into the future. Go to [www.wdc.govt.nz/HaveyourSay](http://www.wdc.govt.nz/HaveyourSay) for an online survey.

-Civil Defence Community Response Group – this group is run as a sub-group to PBRRA. After a hiatus of some years, the group has reformed in recent times, and has been busy working on updating the Parua Bay Civil Defence Plan, to help locals prepare for and cope with a Civil Defence Emergency. The recent challenges of Cyclone Gabrielle saw us opening our local Community Hall as an Emergency Centre, in case of need. We also strive to provide information and support for our local community.



### PBRRA- We are currently looking for new Committee Members.

- Do you live in or around Parua Bay?
- Would you like to contribute to our wonderful community, and meet some new people?
- Do you have a few hours each month to spare? We would love to hear from you!

Please email us on [paruabayrra@gmail.com](mailto:paruabayrra@gmail.com) if you would like to know more.

We would love to have you on board. ☺

Barb Green, Committee Member and Civil Defence Lead

**BLINDS SHUTTERS & CURTAINS WHANGAREI**  
Whangarei, Bream Bay & Districts

**Rollers, Verticals, Venetians, Outdoor Blinds & Shutters**

**Free in-home measure & quote**

**Ph Gail 0211 95 35 35**  
[www.blindsandshutters.co.nz](http://www.blindsandshutters.co.nz)

I am your local property professional.

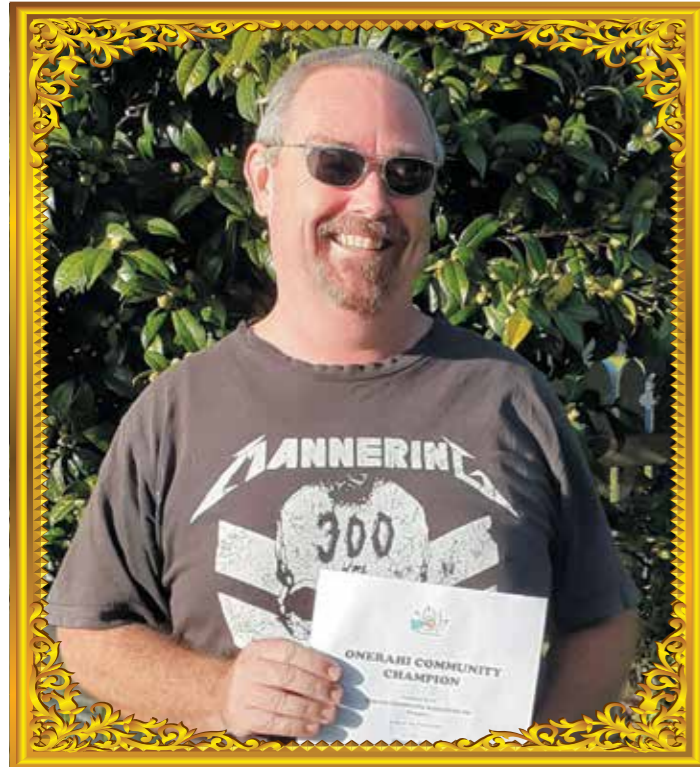
**Rodger that!**

If you have any questions or want a home appraisal. Lets Talk...

*your success is my mission*  
Julia Rodger  
021 718 333 | [j.rodger@barfoot.co.nz](mailto:j.rodger@barfoot.co.nz)

**BARFOOT THOMPSON**

# Community Champions



### March Community Champion

Marcus Bryce for Assistance provided to others during the Cyclone Gabriel flooding. Clearing blocked drains, vegetation clean-up and providing food parcels to those in need.



### April Community Champion

Kim Kilgour for Coordinating Fundraising support for a junior netball team to ensure they can participate in the netball competition.

# Introducing WDC Councillor Olsen

Hello everyone, I am Marie Olsen, one of the newly elected urban councillors.

My first six months in Council have been both challenging and rewarding. I come from 50 years in the medical profession and within that environment you must deal with issues as they arise or otherwise there are consequences. Getting things done in council takes time due to processes that need to be followed which causes frustration.



We have a new council with many diverse skills and knowledge which makes for interesting dialogue. Committees have been appointed and among some I have been placed on are the Quarry Garden Trust, Disability Northland, Positive Ageing Advisory Group, Waste Minimization Committee, Northland Rescue

Helicopter, Airport Committee, Kiwi North Museum and a few others, all of which I am passionate about.

We are about to commence planning on the Long-Term Plan (looking ahead for the next 10 years) so provide any submissions which you wish to make on time.

Submissions on the annual plan closed last week.

My aim in council is to be transparent, honest and hold staff and other councillors to account and represent ratepayers. I am open to chatting with anyone who has concerns. Hopefully we get some sunshine soon, take care everyone.

Cr Marie Olsen

# Sherwood Carpark resealing

Rose Tantau, the Treasurer & Administrator for the Onerahi Community Association, recently sent through some photos of the Sherwood Carpark, at the Onerahi Hall, being resealed just before Easter this year. "Specialists from Auckland that do car parks came up and did it. They also did the Quarry Gardens car park and drive." The photos are of the sealer machine (which is loaded with the bitumen) and the roller machines squishing the bitumen flat once it has been laid. It's great to see our carpark looking so flash!



# Rescue Helicopter relocation

Whangārei District Council proposes to extend the Northland Emergency Services Trust's (NEST's) lease at Kensington. This would mean the helicopter would continue to arrive and depart from its Kensington base (land leased from Council) until it leases a new base either at Whangārei Airport (which is part owned by Council) or moves to another location.

Council's District Development Manager Tony Collins said this leasing process could take at least a year. "I don't think anyone questions the value of this service to Northlanders, but we do have some strong feeling about the coming

and going of helicopters in both Kensington and Onerahi, and any solution will take more time to resolve."

In 2021 Whangārei District Council resolved to support (in principle) NEST relocating from Kensington Park to Whangārei Airport. Since then members of the Onerahi community have objected to the move and mounted a legal challenge to that decision, and a second Council decision in 2022 relating to NEST's proposed relocation. A Judicial Review of Council's decisions is set to be heard in the High Court in August.



Gateway to the North

**Whangarei Airport**

- Helicopters: Operations
- Secure Parking provided by 'Lock and Fly'
- Recreational Flight Training and Flying
- Aircraft Maintenance
- The Apron Café

**Airline Services Linking to the World**

[www.whangareiairport.co.nz](http://www.whangareiairport.co.nz)

**NEWBERRYS FUNERAL HOME**

*"SOMETIMES MEMORIES SNEAK OUT OF MY EYES AND ROLL DOWN MY CHEEKS"*

ALL-GREATQUOTES.COM

Generations of caring for our Northland families... since 1866. Whangarei's locally owned and operated funeral home. Caring, not corporate.

**Ph. 438 2644 (24 Hours)**  
Newberrys Funeral Home  
Corner of Kamo Rd & Moody Ave, Kamo  
admin@newberrys.co.nz  
[www.newberrys.co.nz](http://www.newberrys.co.nz)

Whangārei Takiwā **Arohātia!** Whangarei District Council

**PUANGA MATARIKI Festival**

**PIPIRI - TAKURUA 2023**

The Whangārei Puanga Matariki Festival is happening across our District from 24 June to 22 July 2023.

Collect a festival booklet from Forum North, Whangārei isite, the Civic Centre or the Whangārei Library.

For more information visit [www.wdc.govt.nz/Events](http://www.wdc.govt.nz/Events)

**Matariki Festival Whangarei**

# MAYOR'S MESSAGE



**Kia ora, buongiorno and hello to our Onerahi residents.**  
I love writing for this local publication, it really does feel like a more personal and direct way of speaking to you all. I'm always happy to chat with any of Whangārei's residents, so if there's anything you'd like to discuss in person, please reach out.

Thank you to those who took the time to make submissions on our Annual Plan. This is an important document to help us align projects and funding, and to keep our community up to date with Council priorities for the rest of the 10-year Long Term Plan (LTP) period. At the time of writing this, we had received more than 150 individual submissions to our Annual Plan, which is an excellent response. Thank you for letting us know how you feel, I personally read every submission, and they really do help direct our decision-making processes within Council.

Our Long Term Plans are reviewed every three years, with our next review taking place in 2024. You'll be seeing lots of information coming out about our LTP review in the next few months, as we prepare for our big LTP 2024-2034 consultation early next year.

You'll be hearing me talk about 'pride of place' over the next few months. Whangārei has been my family's home for generations, and I feel strongly about Whangārei and the people who live here. The pride we have for our District is reflected in how we treat each other, and how we treat the spaces and places where we live. I'm not talking about spending loads of money or a lot of time on beautifying public

spaces. I'm talking about each one of us looking around our own street, workplace, or along our favourite walkway, to see what simple act we can take to show we care.

Our Council will continue to maintain parks and recreation areas, cemeteries, and playgrounds, we'll clean city streets, collect rubbish, offer city safe services and manage graffiti removal, and we'll keep enforcing noise, dog and other issues raised by the public. Yet imagine how much more we could all achieve if we took a small step each day towards making our District more beautiful, through words, actions and interactions with each other. Sometimes the smallest acts can make the biggest difference – let's build our pride of place through taking small steps wherever we can.



Joseph Bormans is a proud resident of Whangārei, and takes great care with not only his own garden, but of the berm and street surrounds too. Joseph is keen to encourage people to look after their area: 'It mainly comes down to pride. Pride in your place, and pride in your city'.

**TV AERIAL SERVICES**  
NORTHLANDS AERIAL SPECIALIST  
**FREEVIEW**  
SALES • SERVICE • INSTALLATION  
UHF Aerial & Satellite • Freeview TV  
• Domestic & Commercial • Radio/FM  
• Campervan / Caravan Installs  
**Two Year Guarantee**  
Over 30 Years Servicing Whangārei  
**MACK WILKINSON** M: 021 992 974  
**436 0508** W: www.tvas.co.nz  
E. mack@tvas.co.nz

**WHANGAREI MARINE SERVICES**  
Authorised dealer for Volvo Penta and Yanmar  
**VOLVO PENTA** **YANMAR**  
**CONFIDENCE FROM RELIABILITY**  
09 438 3296 • 021 260 0792  
admin@marinetechs.co.nz  
93 Port Road, Whangārei

## MP for Whangārei: Emily Henderson Opportunities for First Home buyers in Onerahi

People in Onerahi should be confident that they can get ahead and create the life they want for themselves and their families through hard work. Right now, as global inflation is causing costs to rise around the world, it can feel pretty tough, so it is great to see the changes we put in make a real difference.

To support more families into their own homes, the Government upped the price caps for those purchasing through First Home Grant scheme and removing them altogether for the First Home Loan. In Whangārei the new builds price cap was raised to \$800,000, with the maximum price for an existing house raised to \$600,000. With a First Home Loan, buyers only need a 5% deposit, rather than the 20% deposit required by most lenders.

A First Home Grant provides up to \$10,000 to help people pull together their deposit. It has been great to see more people access this support and get into their first home. In the last 6 months to December 2022, 70 Whangārei First Home Grants applications were approved, compared to 17 in the same period the year prior.

A number of changes kicked in on April 1 to lift incomes



and to provide extra support to workers and families. These measures won't fix everything but they will help to ease some pressure and I wanted to make sure people here in Onerahi heard a bit more about this cost of living support.

From 1 April, over a million Kiwis started receiving a bit more in their pocket to help make ends meet. This included an inflation-adjusted lift for superannuation, benefits, veteran's pensions and student supports, benefiting many in our community.

Working families in Whangārei will now receive extra support through increases to Best Start payments and the Family Tax Credit. Changes to childcare have also come into force, meaning more than half of New Zealand families with kids are now eligible for subsidised childcare assistance. This makes childcare

and before and after school care more affordable for more families.

Our Government is focused on the bread and butter issues and the things that matter most to New Zealanders – tackling the cost of living and supporting communities following the recent severe weather, as we plan for the future.

# First home buyer?

You could be eligible for up to \$10,000 First Home Grant, and a 5% deposit with the First Home Loan.

Find out more at [kaingaora.govt.nz/home-ownership](https://kaingaora.govt.nz/home-ownership) or contact the office for more details.

**Dr Emily Henderson MP for Whangārei**

Get in touch: [Emily.HendersonMP@parliament.govt.nz](mailto:Emily.HendersonMP@parliament.govt.nz)

Make an appointment: 09 430 7922

/EmilyHendersonMP



Authorised by Dr Emily Henderson MP, Parliament Buildings, Wellington



# From your MP Dr Shane Reti

**Farming is a vital part of the economy for towns like Whangārei and even more important for rural communities and for lifting New Zealand's earnings. Last year, 63 per cent of goods exported from New Zealand came from agriculture. Agriculture employs 1 in 9 workers. It's the backbone of the New Zealand economy.**

Farmers deserve recognition for their efforts to reduce their environmental footprints. Their livelihoods, and the legacy they leave, depend on them protecting their environment. In the past decade, dairy farmers have fenced 25,000 km of waterways, indeed, 98 per cent of waterways covered by the Sustainable Dairy Water Accord have been fenced. Additionally, New Zealand has among the world's most carbon-efficient farmers. Of course there is work to do but New Zealand farmers understand that without a healthy environment they have nothing.

For many though it just seems that the government has tied farmers up in red tape, introducing more than 20 new or updated rules that have added compliance costs, without any meaningful environmental change.

My team and I have a different view and will end Labour's red tape. Our "Getting Back to Farming" package of 19 initiatives backs farmers while protecting the environment. We will deliver smarter rules for the future, super-charge the rural economy and get Wellington out of farming. For every new regulation created we will also remove two. Whangārei needs farmers. New Zealand needs farmers. Let's back them.



**DR SHANE RETI** OSM  
National Party list MP based in Whangārei

**We need four lanes - not sticks!**

P | 09 438 0992  
A | 105 Cameron Street, Whangārei  
E | shane.reti@parliament.govt.nz  
W | shaneretinational.org.nz

Funded by Parliamentary Service & authorized by Dr Shane Reti MP, 105 Lower Cameron St, Whangārei

# Waimahanga Track Action forges ahead

If you are one of the many who enjoys walking, riding or running the Waimahanga and Boswell's Tracks you will be noticing some changes along the way.

Slowly but surely the war on weeds is making progress, The number of Moth Plant pods and Banana Passionfruit vines have been greatly reduced this last season. WTA has targeted the creeping vines that threaten to smother our valued trees.

At the Waimahanga Road entrance a large area of very dead Convolvulus has been reduced to dead brown waste. WDC has assisted with this much needed bio control which will stop many seeds moving on. The next assault is on the Convolvulus growing up valued trees nearby. Help is needed over the winter months to cut the vine under the trees at ground level. A start has been made but we need more help.

If you have a look around at the Waverly Street entrance to Boswell's Track make sure you look up at the dead Elaeagnus vine in the towering Kahikatea Trees out near the estuary edge. These trees which are well over 100 years old were being threatened by Elaeagnus which originally was brought



to New Zealand as a hedge plant. It is now a pest plant which is dominating this end of the track. Ginger and Asparagus fern is looking pretty sick along the way thanks to WDC and the hard work from volunteers.

We are lucky to have the coastal tracks to enjoy. Please come along to join the team. Chrissie's baking at the end of a blitz is a sure fire hit.

You can register your interest in being a part of Waimahanga Track Action by giving Chrissie a txt 021353792 or email: [Onerahiweedsgroup@gmail.com](mailto:Onerahiweedsgroup@gmail.com)

# Invasive seaweed warning

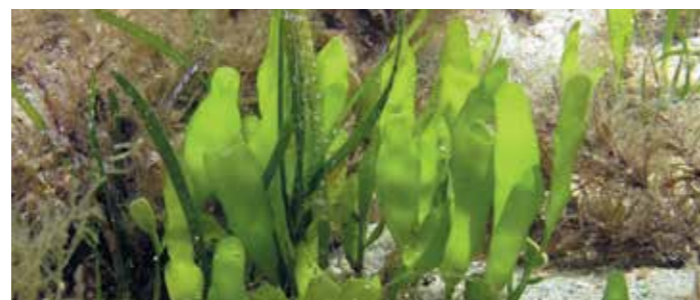
**Whangārei Harbour is at risk from two new, superspreader invasive pest seaweeds that are devastating parts of the sea around Great Barrier Island, an ocean ecologist warns. Tutukākā-based ocean ecologist Glenn Edney said it was now a case of when not if the seaweeds caulerpa brachypus and or caulerpa parvifolia arrived.**

In the case of Whangārei Harbour, its arrival would devastate a harbour already under pressure from run-off, sediment and over-fishing, Edney said. "We need to have an official plan in place before its arrival," Edney said. The bright green invasive caulerpa seaweed is a major risk to Northland's east coast harbours. He said a piece not much bigger than a freckle, arriving at Whangārei Harbour's seagrass beds could grow to become a thick mat covering the area of a rugby field within "a matter of weeks", depending on the time of the year.

Edney said the seaweeds' arrival in Whangārei Harbour would threaten the internationally-famous shellfish beds at Mair Bank, Marsden Bank and Snake Bank. It would also put scallop beds at places like Urquharts Bay at risk. Seagrass beds at One Tree Point would also be under threat. This would in turn severely impact the local community's recreational fishing in the harbour. It would also add further pressure for orca visiting the harbour, due to a reduction in the availability of food for stingray, their favourite prey. Whangārei Harbour's seagrass beds were critical juvenile fish habitats. "Areas like the Urquharts Bay scallop beds and Mair Bank and Marsden Bank are already closed to try and help hugely under pressure stocks of scallops, cockles and pipis in these places recover," Edney said. "If the pest caulerpa species arrived, it would tip these spots over the edge." Whangārei Harbour is a major estuary habitat and food source for as many as 2000



Caulerpa brachypus



Caulerpa parvifolia

shorebirds at a time, and Edney said the invasive weed would also impact their world. The highly tenacious and invasive seaweed would cover an area like Snake Bank "within a matter of months".

Information about the two new caulerpa seaweeds, and what to do if you find them, is available on the Northland Regional Council's online pest hub.

Based on a report by Susan Botting, Local Democracy Reporting, RNZ

## GET YOUR FAMILY HISTORY PRINTED FOR PROSPERITY

Experienced, Professional and Affordable



Meg Mclsaac  
09 434 0096

[megan@megatype-publishing.co.nz](mailto:megan@megatype-publishing.co.nz)



"Providing for the healthy bodies and healthy minds of our kiwi kids"

PH 436 3085  
[www.kiwikidselc.co.nz](http://www.kiwikidselc.co.nz)

4 Waimahanga Rd, Onerahi



**Morris & Morris Funerals**  
HONOURING LIVES FOR GENERATIONS

65 YEARS  
FUNERAL SERVICE EXCELLENCE

Funeral Directors  
MEMBER

**Your Local Funeral Directors**  
Proudly Caring for Generations of Northland Families

Meaningful farewells for your loved one

Talk to the experts, we understand funerals  
24 hours a day ~ 7 days a week

**Whangarei & Dargaville**

199 Kamo Road Whangarei 0112 | 15 Gladstone Street Dargaville 0340

Phone: 0800 66 77 47

[office@morrisandmorris.co.nz](mailto:office@morrisandmorris.co.nz)  
[www.morrisandmorris.co.nz](http://www.morrisandmorris.co.nz)

# Northland Regional Councillor, Amy Macdonald



**amym@nrc.govt.nz**  
**www.nrc.govt.nz**  
**To report pollution and environmental incidents call the 24/7 environmental hotline: 0800 504 639**

**Kia ora Koutou**

Autumn is here and it's been very apparent when out in the elements at Onerahi junior soccer on Saturdays. Seeing the joyful faces as the kids run around in the wind, rain and mud reminds

me of that saying "there's no such thing as bad weather, only the wrong clothes". Last winter I learnt that with coffee, a good raincoat and the company of other parents, mornings on the sideline can become a weekly highlight where the wind blows emails, meetings and deadlines far from mind.

Our NRC governance structure is set for the term. Leadership roles I hold include chairing the Natural Resources Working Party, and deputy chair on both the Joint Climate Change Adaptation Committee and the Kaipara Moana Remediation Joint Committee. Another big focus is the Freshwater Plan Change, where NRC reviews all rules relating to freshwater quality in Northland. It's a massive undertaking, with wide-reaching implications for land-use and our environment. Later this year a discussion

document will be released for communities to comment on, an important opportunity for locals to speak up about your aspirations for healthy water quality in Whangārei Harbour.

The impacts of Cyclone Gabrielle are ongoing, and as I write we are being beaten by another storm bringing heavy rain and flooding. The NRC civil defense team continues their hard work in response and recovery. There are a lot of learnings from these weather events, some of them we need to address as individuals (like household preparedness), and some require high level political cooperation. The vulnerability of Northland's critical road connections and telecommunications infrastructure has been exposed; we must work with the government to restore and rebuild for future resilience. The costly impacts on our landscape and lives are a powerful reminder that proactive climate change mitigation and adaptation is essential and requires urgent action and investment.

I will continue meeting with local groups to keep in touch and hear community thoughts, I'm happy to hear from you, please just get in touch - amym@nrc.govt.nz, or find me on facebook: Amy Macdonald - NRC Councillor.

Ngā mihi nui,  
 Councillor Amy Macdonald  
 Northland Regional Council

*Disclaimer - this is my personal opinion and not that of the Northland Regional Council*




**Elsbeth Sugrue**  
**Taylor Wilkes - Nicole Dempster**  
**Garby Smith**

Onerahi Shopping Centre  
 Call us on 4360919 for an appointment  
 No GP referral required [www.onerahiphysio.co.nz](http://www.onerahiphysio.co.nz)

**When things don't go well!**  
 We are here to care ... offering ...

- Accident and emergency care
- Health checks and vaccinations
- Trained veterinary nurses
- Open 7 days
- 24 hour emergency care

**PET CENTRES**  
 PH 470 1060

Whangārei - 16-18 Maunu Road  
 Hikurangi - Cnr George & Park Sts  
 Onerahi - 165 Onerahi Road

**NORTHLAND VETERINARY GROUP**

Like us on Facebook [www.northvets.co.nz](http://www.northvets.co.nz)



**the Bottle-O PARUA BAY**

Wide range of craft beers, spirits, wine and beer in stock

Open Mon - Sat 9.30 - 8pm • Sunday 9.30 - 7pm

**09 436 1219**

FOLLOW US @The Bottle-O Parua Bay for daily updates

# What is chat GPT? Is it as bad as everyone makes out?

Chatbots, or chat GPTs, are computer programs that can converse with humans in natural language. They are becoming increasingly popular in customer service, social media, and other areas. In fact, many of your search engines, like "Google" and "Bing" use these chatbots behind the scenes to locate and answer your searches.

While chatbots can be a useful tool for businesses, there are some potential drawbacks to consider.

The primary benefit of chat GPTs is their ability to provide quick, efficient customer service. By automating conversations, companies can save time and money by quickly addressing customer questions and complaints. Chatbots can also be used to help customers with product and service inquiries, as well as to provide personalized recommendations and suggestions.

Another advantage of using chat GPTs is that they can be customized to meet the needs of different businesses. Companies can use chatbots to provide targeted, personalized experiences for customers, such as providing discounts or promotions to certain customers. Additionally, chatbots can be trained to recognize certain keywords and phrases, which can help them better understand customer inquiries.

However, there are some downsides to using chat GPTs. Since these programs are programmed to respond in a certain way, their responses may not always be accurate or helpful. Additionally, chatbots can be easily tricked into giving out sensitive information or responding to inappropriate requests. Furthermore, chatbots may not be able to handle

more complex customer inquiries, which may require a human customer service representative.

Overall, chat GPTs can be a useful tool if used correctly. Just don't give them your credit card numbers, as you could end up with interesting charges. Always remember if you are unsure about the software you are using, or new website, give your friendly IT person a call, they are here to help.




## Can you imagine a Predator Free Onerahi?

As the weather gets cooler, more rats and mice will be making their way into your house to keep warm. Now is the perfect time to start trapping in your backyard - contact us for your free rat trap.\*

**Get involved today**  
[onerahi@tiakinawhangarei.co.nz](mailto:onerahi@tiakinawhangarei.co.nz)  
[tiakinawhangarei.co.nz](http://tiakinawhangarei.co.nz)

\*while stocks last



Proudly supported by **Northland REGIONAL COUNCIL**



**Vince Cocurullo**  
 Northland's Fix-it man

IT • COMMUNITY PROJECTS • LOCAL ISSUES

- COMPUTER FAILURE
- REMOTE ACCESS
- EMAIL TROUBLE
- NETWORKING

OR JUST SOME FRIENDLY ADVICE

P 09 4388 834  
 M 021 438 952  
 E vince@cocurullo.co.nz  
 W www.cocurullo.co.nz



[Facebook](https://www.facebook.com/vincecocurullo) [Instagram](https://www.instagram.com/vincecocurullo) [LinkedIn](https://www.linkedin.com/company/vincecocurullo)

## ONERAHI FISH SHOP

**OPEN 6 DAYS A WEEK**  
**MON to SAT 11.30am - 9pm**

**09 436 0958**

112 Onerahi Road  
 Onerahi Shopping Centre  
 (Next to Pepe's)

**Chinese food**  
**Drinks**  
**Milkshakes**  
**Take-aways**

# Australian Outback Adventures

## Part 5: Jandamarra Country

with Libby & Peter Urbahn

**In Western Australia's north-west Kimberley region, Windjana Gorge forms a gigantic slash across planet earth. After squeezing through a shaft between vertical rock faces, we entered the gorge, sheer rock walls quickly dwarfing us as they towered over 30 metres into a brilliant blue sky. Formed millions of years ago, when the Lennard River eroded a few kilometres of the Napier Range, the gorge was 100 metres wide and skirted by lush monsoonal forest.**



We walked along sandy banks, feeling irreverent as 300 million-year-old Devonian limestone grit crunched beneath our feet. With several permanent waterholes, the gorge supported dozens of small freshwater crocodiles. They were everywhere, unblinking and stationary, looking cute and cuddly like they were straight from a tourist shop. We half-expected to find a Made in China tag sewn onto their tails.

A university research team was busy catching and tagging the reptiles to document their numbers and gender. While we watched, a researcher grabbed a large sawfish while another team member quickly measured, tagged, and released the struggling creature. Also known as carpenter sharks, sawfish are a family of rays characterised by long, narrow, flattened nose extensions, lined with sharp transverse teeth, arranged in a pattern resembling a chainsaw. They are rare so far inland.

Tethered to the riverbank, dozens of freshies (freshwater crocodiles) waited to be processed. With their magnificent reptilian snouts plastered in duck-tape to prevent them from snapping, the crocs looked peaceful and accepting. As we continued along the riverbank, we were acutely aware of walking in sacred Aboriginal country, the gorge especially significant to the Bunuba tribe of the



Freshwater crocodile at Windjana Gorge

Kimberly region. Windjana was the location of a bloody protest when white settlers captured one of Australia's greatest Aboriginal protestors, Jandamarra. In the 1890s, a Bunuba man, Jandamarra, a former stockman, had led an armed insurrection against the white settlers. Right where we were standing, a posse of 30 heavily armed police and white settlers had attacked Jandamarra and his followers in 1894. Jandamarra had escaped before capture but was later shot.

We observed two Aboriginal elders accompanying the university group and supervising the croc tagging. After a final wave to the researchers and a lingering look at the walls of magnificent Windjana Gorge, we headed back to our 4X4, squeezing back through the narrow shaft of rock. Preserved in the walls of the ancient Devonian reef were fossils and other extinct marine creatures. Standing near such an ancient natural structure was awesome as we marvelled over remnants of coral and sea-loving creatures from the Cretaceous Period. Palaeontologists have found fossilised bones from massive 15-metre crocodiles here, and also outsized turtles, all part of Australia's mega-fauna era. Windjana Gorge was a fabulous place to spend a fascinating afternoon. Our memories of that special day will always remain with us.



Magnificent Windjana Gorge



Finding a rare sawfish in Windjana Gorge

# Fixing the old Municipal Building

**Work to restore Whangārei's fire-damaged old Municipal Building on Bank Street is due to begin mid-2023, will cost \$7,430,961 and should be completed in 18 months. This follows a decision by Council in late April to borrow a further \$3,254,784 to complete the project.**

In June 2021 Councillors approved \$4,176,177 to restore the building. In the meantime, inflation (plus more discoveries about the extent of work) have pushed the total costs for restoration up to \$7,430,961.

Councillors debated the benefits of demolition, restoration (the preferred option) or saving the façade and building a new building behind. They also considered a fourth option from the floor – to sell the property to a developer subject to conditions being placed on the kind of development. Councillors Peters and Nicholas Connop led the renovation call, voting for the option, along with Mayor Vince Cocurullo and councillors Benney, Ken Couper, Deb Harding, Patrick Holmes and Scott McKenzie.



Borrowing for capital projects such as this means that the debt will be spread over many years, rather than coming out of the rates in one single year. Ultimately, the decision to allocate the funding and proceed with the project was put to the vote and passed eight in favour, six against.

# Oruku Centre back on the table

**Whangārei District Council has once again stepped into the Oruku conference and event centre ring with a decision to put as much as \$11.4 million towards the new version of the facility on the edge of the Town Basin.**

The 23 March 7-6 majority vote in favour of the revised centre funding saw Mayor Cocurullo, Deputy Mayor Phil Halse and councillors Gavin Benney, Ken Couper, Deb Harding, Scott McKenzie and Carol Peters in favour of new funding. Meanwhile councillors Nicholas Connop, Jayne Golightly, Patrick Homes, Marie Olsen, Simon Reid and Paul Yovich were in opposition. Councillor Phoenix Ruka abstained. He earlier told the meeting he was concerned about going ahead in light of a proposed 10.9 per cent 2023/2024 rates rise.

The council will allocate funds of up to \$650,000 annually for the centre's first five years - if the council decides that is necessary. This annual figure equates to \$3.25 million over that time. The council has also decided the Northland Events Centre Trust will get \$5 million for centre fitout and equipment plus up to \$50,000 annually for three years, also if the council considers that necessary. These extra funding decisions are on top of the council's July 2022 decision to put \$3 million towards upgrading Riverside Drive wastewater and roading infrastructure, upgrades needed around the lower Town Basin site for the Oruku development.

Early geotechnical work on the site is expected to start in July.



Based on a Radio New Zealand article 'Whangārei District Council drawn back into \$64 million Oruku orbit' written by Susan Botting.

## Onerahi Garage

WOF, REPAIRS, SERVICING, CAMBELTS, TYRES, BATTERIES, BRAKES, WELDING, NEW TRAILER SALES, PICK UP/DROP OFF, COURTESY CARS

1 CHURCH ST, ONERAHI  
admin@onerahigarage.co.nz

09 436 5971

## Onerahi Pharmacy

116 Onerahi Road  
Phone: 09 436 0567  
www.onerahipharmacy.nz

care + advice

Your local health professional

Open from

7.30am to 8.00pm Monday to Friday  
8.00am to 8.00pm Saturday to Sunday

Phone 09 436 8008

# It's not too late!

**Footy at Onerahi has kicked off for another year. Whilst the weather has not been favourable to start the season, it has not dampened our spirits. Registration numbers are up across all grades and teams and are as follows:**

Over 90 children registered in the fun football (5-6 year olds) and first kicks programmes (7-8yo's).

- 7 Junior boys teams (ages 9-12)
- 2 junior ladies teams (ages 9-12)
- 4 Youth mixed teams (ages 13-17)
- 1 Senior Women's Team
- 3 Senior Men's teams



The 2023 Women's Team  
<https://www.facebook.com/OnerahiFootballClub/>

In total, over 320 players are registered to the club for the 2023 season.

For 2023, the club is focussed on growing our woman registrations at all levels. It is pleasing that almost half of the kids in the first kicks / fun football space are girls. This coupled with two junior girl sides (who play in a girls only competition on Saturday's), and a strong senior women's team, means the future looks bright at all levels at Onerahi in the female space.

It is not too late to register Onerahi's next footballing superstar! We are able to have more players in the fun football, first kicks and junior ladies teams. If you wish to make contact with Onerahi and discuss options for your child, please send an email to [onerahifootballclub@outlook.co.nz](mailto:onerahifootballclub@outlook.co.nz).

Nga mihi,  
 Aimee (Secretary of the Onerahi Football Club)



## Onerahi School Report

### Kia ora e te whānau,

Great news! Instead of hearing from me this issue, we luckily get to have our tamariki sharing their voice with you through art and writing. Please enjoy.  
 Ngā manaakitanga, Danny Hamilton  
 Tumuaki Tuarua / Deputy Principal



Self-Portrait - Kasen - Year 1



Self-Portrait - Dominic - Year 1

### Ida, Year 2

Maui's mum rushed into the hole quickly so Maui could not find her. Rush, rush, rush, she went. Suddenly she was in the hole. She was safe.

### Caiden, Year 2

Maui found the secret place and he found his parents. Maui wanted his grandfather's jaw bone. Before that could happen, Maui was chucked in the water by his mum. Maui couldn't see because he was wrapped in his mum's hair.

### Shiloh - Year 4

A long-nosed lady was slouching over her small table. She was staring at her jars with objects such as children's fingers, cat claws, and crocodile's teeth.

### Ruby - Year 5

The clearing in the forest was covered in a frosted layer of thin snow. From the gray sky, soft snow started to lightly fall on to the tall tree tops. Little baby birds were chirping quite loudly as their mothers fed them. The trees were creaking in the wind.

### Clare - Year 5

The clearing in the forest was covered in shiny layers of icy frosted snow. From the cloudy sky, patterned snowflakes started to gently fall on the bare trees. CLUMP! CLUMP! CLUMP! Giant mounds of snow started falling heavily under the bare creaking branches of old forgotten

## Parua Bay Cemetery Trust

The Parua Bay Cemetery Trust is looking for expressions of interest to obtain further land to enable them to continue with burials. The Parua Bay Cemetery is a Historic Cemetery and it is almost at full capacity. At this stage burials are only available for anyone with pre-purchased plots and those with family connections to the cemetery. Contact Murray Jagger 021 243 1347 or Claire Pearson 021 250 7045 if you think you can help.



Exploring Cubism - Machado - Year 5



Flowers Together - Molly - Year 2



Whare Tapa Rima - Kenzy - Year 6

trees. The screeching birds flew smoothly, skimming the air, trying to get far away from the unforgiving noise.

### Carley, Year 6

6:30am - I was in my bedroom intensely studying my eyelids when... Beep! Beep! Beep! My sister cut the clock off with a huff. Hi, I'm Lidea and I want to tell you about one of my adventures.

It all started when my younger sister, Mia, did a big yawn and dropped her favourite toy out the window. My whole family live in a tree house, so we would have to climb down the ladder after we opened the trap door. Mia rushed for the ladder.

My brother was playing soccer on the ground. Well he was playing soccer, until he started climbing the ladder.

"Have you seen my toy?" Mia said with a sob.  
 "No, my ball went into the time machine over there. I need to tell dad," he said as he tried to climb past Mia.

"You will never get that again," I said with a grin from one of the tree house windows. My brother huffed and climbed inside. Then a thought came to me, what if Mia's toy had fallen into the time machine as well? I raced into the kitchen.

Dad was studying on the kitchen table. He was a very clever scientist. "Dad, when and where would the time machine you built take you if you went into it?" I said to him quickly.



Field of Poppies - Ava - Year 2

"It would take you to a land full of dinosaurs," he said without looking up. He paused and then added, "Don't go there." He was now looking right at me. I left for my room as my brother walked in.

I had to get the toy back without dad knowing. I began packing for the trip...  
 To be continued...

BARFOOT & THOMPSON

## Anna has 20 years service at Barfoot & Thompson

### You know you're in good hands when you list with Anna

*Anna is very professional and up front. There are never any surprises or last hiccups as Anna has all bases covered. We would highly recommend. **Dean & MaeRene***

*Best Real Estate Agent!! Anna found us the perfect house. She kept us well informed throughout the whole process and made sure us as buyers and the sellers knew what was going on all the time. **Simon & Soffie***

*She's really professional, and very supportive helping us go through this important process. Very good communication and fast response which made our lives much easier. **Jane Shen***

**CALL ANNA TODAY!**  
**Anna Shervell**  
 M 027 445 1183  
 E [a.shervell@barfoot.co.nz](mailto:a.shervell@barfoot.co.nz)

# The Pines Golf Club - Juniors report

A awesome time spent with Parua Bay School, Onerahi Primary School Camp last year at Whakapara Marae and with Raurimu Avenue School the last few months introducing the Snag Golf activity. Pupils and teachers absolutely loved the event and hopefully continue this service later in the year. Thanks to all teachers and parents.

We completed our summer six week program with Friday night Golf Juniors last month and we must acknowledge Sport Northland for funding our event. We had averaged 40 kids per session and it is continuing to be a very successful and popular event. However, when we have more coaches we can then take on more kids.

We had 16 Pines Junior members attend the Top of the Harbour event run by the Eagles Society in Waipu. Notable achievements were Josh Beckham, Andrew O'Brien, Thomas McDonald and Henare Parangi playing in the First Division; Hawk Edwards the NETT Winner Div Two and Braithe Pelasio the Runner Up.

Special mention - Jim Burrows, Caiomhe and Conor Leahy, Ella McDonald, Cooper Spence, Jordan Parangi, Kaya Edwards, Kyle Beckham, Ollie and Jack Haglund all played their first Juniors tournament outside of the Pines Golf Club with Jim Burrows getting a birdie on his first hole. Well done Jim!!!



### Junior Spotlight - Andrew O'Brien (13 years old)

Andrew is currently attending Whangārei Boys High School as a Year Nine student, started the Junior Golf program in Feb 2019 and since then he has already won the Pines Golf Club Men's Junior Stroke Play Division in 2022, represented Whangārei Heads Primary School at last years AIMS Games held in Tauranga and is currently in the Pines Men's Pennants team and doing very well. We are all so proud of you Andrew.

Cheers JP  
John Pelasio, Juniors Captain at The Pines Golf Club



From left to right - Jasper Evans (Parua Bay School), Andrew O'Brien (Whangārei Heads School) and Josh Beckham (Parua Bay School)



# Raurimu Avenue School

## "Poipoia te rito o te harakeke"

Tēnā koutou katoa. I write this with yet another wet day at our door. Fortunately, we have managed, in between showers and on the odd day of the sun teasing us with it's presence, to get out and run off the energy our akonga exude.

We have a fantastic hall here that over the wetter months is appreciated as a space that can hold sports, kapahaka, assemblies and general play to help get out of the classroom. It is also a fantastic space for visitors to set up plays and roadshows.

We had the Te Tai Tokerau Tamariki Mental Wellbeing Project visit us. What an amazing group this is with strategies for our tamariki and lots of entertainment and interactive games.

The Pines Golf Club came and gave all our students an introduction lesson to golf. We currently have Whangārei Softball Association coming in to show the basics of the sport and we have a beautiful community member - Shirley - who approached us to offer piano and singing lessons to interested students. We are seeing some real talent flourishing there.

We jump at the chance for our students to be introduced to sports or activities they may not otherwise have. If you have a skill you would like share, please contact us.

Some of our learning at the moment incorporates plants and gardening. We have started our winter planting and later

in the year will plant vegetables that will be ready to harvest for whānau to have over the Christmas break. We saw last year the need to have potatoes, kumara, pumpkin due to the price and demand at the holiday time.

Upcoming we have our road safety week, pink shirt day, scholastic book fair and class EOTC(Education outside the classroom)

Hoping for some drier weather to get back out on the field and bike track.

Ngā mihi nui  
Moutini Bryers  
Tumuaki



"Please cremate me. Don't put me in the ground where someone may dig me up if you move house."

The team at Stardust will give me a dignified farewell.

## Stardust Cremation Services

201 Te Rongo Road, Parua Bay  
Phone 09 436 1333; Mobile 0274 960 462  
Email stardust@xtra.co.nz





## Parua Bay Childcare

Nurturing childcare for babies to 6 years old

6 Lamb Road, Whangārei  
**Phone: 09 436 5544**



## Collier & Jones DENTURE CARE

09 438 8076 / 114a Bank St,  
(Opp Jimmy Jacks)

<p><b>NEW DENTURES</b></p> <p>Whatever your needs are in the way of dentures, talk to us!</p>	<p><b>OLD DENTURES</b></p> <ul style="list-style-type: none"> <li>✓ Relined</li> <li>✓ Repaired</li> <li>✓ Cleaned</li> </ul>
---	---

• Free Examination • No Obligation • Quality Assured •  
• Eftpos Available • Winz Quotes •

## FLAMES

RESTAURANT & BAR



OPEN DAILY FOR BREAKFAST & DINNER

Exciting seasonal menus & delicious locally sourced produce

BREAKFAST MON - FRI 7-10AM | SAT/SUN 7.30-10.30AM  
DINNER 5.30 - 8.30PM  
(closed public holidays)

8 Waverly St, Onerahi  
09 436 1539 | info@flameshotel.co.nz



# Fighting cabin fever

If you suffer from the winter blues, the Bream Head Scenic Reserve offers walks for all levels of fitness. The most challenging is the Bream Head/Te Whara track, this requires a high level of fitness and takes on average five hours one way.

If you like a good workout, but don't have the whole day, try the Peach Cove track. It takes about two hours one way from the Peach Cove Car Park on Ocean Beach Road. This is a steep track with a lot of stairs. An alternative is to come up from the car park and then turn left, this follows the main Te Whara track back to Ocean Beach. From there it is a short walk back up the road to your car. This loop walk takes about three hours.

Most popular is the Smugglers Bay walk, an easy beautiful loop walk that will take about one hour and 30 minutes to go all the way around. There are some steps, spectacular views and the historic gun emplacement site to explore. If you just want to go to Smugglers Bay from the carpark at Urquhart Bay it is 20 minutes one way.



If you are up to it, you can combine all walks with a dip in the ocean. When you plan to come out and want a map of the Reserve on hand, you can download it from the Bream Head/ Te Whara Conservation Trust website ([breamheadtrust.nz/experience-pages/walks-and-tracks](http://breamheadtrust.nz/experience-pages/walks-and-tracks)). Please use the Kauri Dieback Stations before entering the Reserve.

On behalf of Bream Head/ Te Whara Conservation Trust

# Backyard Kiwi Release

The recent kiwi release at Parua Bay was a fantastic community event. Over 360 locals and visitors welcomed 4 new kiwi and had the special opportunity to meet them up close (see pics).

Thank you to all those involved in the huge team effort that make these community engagement releases possible. Particularly thanks to Ngati Hine and the Parua landowners where these kiwi originally came from for the gift of the kiwi, they will be treasured!

We transfer young kiwi chicks to the FOMLI/ Te Parawhau managed Matakoho/Limestone island where they grow up before we re-catch them for release.

Community groups like Backyard Kiwi and Kiwi Link are enabling the growth of our kiwi population not only in the Whangārei Heads/Parua Bay area but now moving inland and up the coast towards Tutukaka Landcare thanks to technical and financial support by Kiwi Coast and the Northland Regional Council.

### The four kiwi released:

- Murdoch – a 6 year old male named after Murdoch Ross, community stalwart and keen Backyard Kiwi supporter.
- Maia – 2 year old female. Maia is named after one of the Matariki stars by Parua Bay locals.
- Om – an adult female who was named by FOMLI and Multicultural Whangārei.
- Fetu Mama – a juvenile kiwi named by FOMLI and the Northland Pacific Island Charitable Trust (Fale Pasifika).

The crowd heard all about why uncontrolled dogs are the number one threat to our kiwi population. We are able to release these kiwi because of the good dog control by the huge majority of our local dog owners. They also heard about local stoat control to protect kiwi chicks that involves quality trapping and crucially effective ground based Kiwi saver/1080 pulses.

All four of the kiwi have settled in well. They were heard calling in response to local kiwi shortly after their release. You can follow the transmitted kiwi movements on our website monthly report and tracking map: [www.backyardkiwi.org.nz](http://www.backyardkiwi.org.nz)

Todd Hamilton  
Backyard Kiwi Project Manager  
M 021 1145 385  
E [todd.hamilton64@gmail.com](mailto:todd.hamilton64@gmail.com)  
W [www.backyardkiwi.org.nz](http://www.backyardkiwi.org.nz)



» Business Cards  
» Flyers  
» Posters  
» Vinyl Labels  
» Books  
» Magazines  
» Letterheads  
» Folders  
» Invoice Books  
» Calendars  
» Pads  
» Rack Cards

AND MUCH MORE!  
ALL WORK GUARANTEED

0800 141 402 [f/jopprint](https://www.facebook.com/jopprint)  
info@jop.co.nz • www.jop.co.nz

**JOP**  
design | print | distribution

[www.treework.co.nz](http://www.treework.co.nz) Branching Out Tree Care Ltd

## Tree Care Specialists

Qualified Arborist  
Ambassador for Trees - NZ Consultants, Practitioners & Data Collection

**Arborists – Tree Surgeons**  
Phone us for prompt, personal services & quality workmanship

- All Aspects of Tree Work
- Complete Removals & Cleanup
- Experienced & Qualified Crew
- Horticultural Industry Trainer
- Stump Grinding
- Public Liability Cover
- Chipping & Mulching
- Specialist Climbing Team
- Large and Difficult Trees
- Single or Massive Projects
- Will beat other Quotes by 5%

[www.treework.co.nz](http://www.treework.co.nz)  
**09 436 4466**  
Mobile: 027 565 7794 or 0508 ARBORIST  
Email: [p\\_r.gosling@xtra.co.nz](mailto:p_r.gosling@xtra.co.nz) (272 67478)

**PAUL GOSLING – ARBORIST**

# PEPE'S DAIRY

ONERAHI SHOPPING CENTRE  
110a Onerahi Road, Whangarei  
Service with a Smile!

Mon-Fri: 7am - 8pm **OPEN 7 DAYS** Sat-Sun & Public Holidays: 8am-8pm

**09 436 3600**

# Rick Anderson

Painter & Decorator 2001 Ltd

**021 038 3733**

[rickyanderson55@icloud.com](mailto:rickyanderson55@icloud.com)  
[www.rickanderson.co.nz](http://www.rickanderson.co.nz)

# Friends of Matakana Island

## Visitors & volunteers



Indi checking out Forest Gecko Forest Gecko Spotlighting

**We hosted our third Adopt-A-Spot Day on 19 March. We worked together to clear the storm-blown debris from around the oi/grey-faced petrel burrows before tackling Mexican devil and moth plant in our recurring nightmare spot south of the pā.**

Volunteer Day went ahead with a flurry of activity. We had a near-full barge with 23 volunteers eagerly awaiting pickup on the Onerahi pontoon. We filled bait stations, cleared paths and drains, and picked up rubbish from around the coast. Some of the group also helped the Onerahi Lions crew work on the composting toilet.

The NatureScool group appeared to enjoy their visit to the motu leaving with soggy smiles on their faces after a full day of rain. A small group from Whangārei Youth Space also braved the rain, visiting as part of the WYS School Holiday Programme.



**DOUGLAS ROOFING**  
Call Douglas Roofing for your **FREE, no obligation quote**  
• New Roofs • Re-Roofs • Roof Repairs • Spouting  
021 892 770 • [www.douglasroofing.co.nz](http://www.douglasroofing.co.nz)  
Email: [admin@douglasroofing.co.nz](mailto:admin@douglasroofing.co.nz)



Bodywork & Natural Therapies for Dogs  
021 0506 592 - Jill Shires



**Joy at the BAY**  
HAIR SALON  
1379 Whangārei Heads Rd. Parua Bay  
Call for an appointment or book online  
[www.joyatthebay.com](http://www.joyatthebay.com)  
Phone 436 5002



09 436 0150  
09 436 5613  
**W.H.A.T. AUTOMOTIVE**  
Your local professional automotive repair centre.  
[whangarei.heads.autos@gmail.com](mailto:whangarei.heads.autos@gmail.com)  
[www.whatautomotive.nz](http://www.whatautomotive.nz)

Lawn Mowing by your Local Expert



• RESIDENTIAL MOWING  
• COMMERCIAL MOWING  
• HEDGES & PRUNING  
• GARDENING / SPRAYING  
• SECTION CLEAN-UPS  
• RUBBISH REMOVAL  
• GUTTER CLEANING  
• ALL WORK GUARANTEED

Phone 0800 454 654  
BOOK ONLINE at [www.jims-mowing.co.nz](http://www.jims-mowing.co.nz)  
Fully Insured and Security Checked for your peace of mind

Learn something **NEW...**

- Upskill for work
- Meet new people
- Discover a new hobby
- Increase your knowledge

OFFERING EVENING CLASSES & WEEKEND WORKSHOPS FOR ADULTS



Affordable, Accessible Lifelong Learning  
COMMUNITY EDUCATION WHANGAREI  
Ph 09 435 0889 [cew@kamohigh.school.nz](mailto:cew@kamohigh.school.nz) [www.cew.ac.nz](http://www.cew.ac.nz)

**HOPEONERAHI**  
PRESBYTERIAN CHURCH  
135 Onerahi Road • Office: 438 1667  
Minister: Howard Carter 027 750 8602  
Sunday Worship @ 9.30am. All Welcome!  
Sit Fit \$5 – Monday 10.30am - Hope Onerahi Church Hall  
'Use it or Lose it' - Contact Bett Harvey 021 208 6719  
Mainly Music in the Church Hall – Every Wednesday 10am (during school term). By donation  
Contact Nancy Dodds - 436 1444

### Flora and Fauna

I caught up with Sir Ed to change his transmitter. Despite being not long out of incubation mode after sitting on back-to-back nests for most of the summer, Sir Ed appeared to be in good shape. One of our eagle-eyed Adopt-a-Spotters spotted a forest gecko basking on a tree trunk. Forest geckos are super cryptic and can change their colouring to blend in with the surrounding habitat, so it's always a neat feeling when you manage to lay eyes on one!

### Pest control

It's not surprising to see an increase in rodent numbers at this time of year, as natural food sources dwindle, rodents are more likely to be attracted to and investigate the peanut butter in our tracking tunnels and traps. We've caught 2 rats this month, unfortunately, one of them was caught on the Island near the all-tide berth, and the other was on Knight Island. We suspect that a few rats have been washed down the Hatea with recent flood waters and ended up on the Island. We have begun our island-wide toxin pulse so hopefully, this will knock any additional pest incursions on the head ASAP!

I stumbled across a doozy of a moth plant SE of the Edge house ruins with a base diameter of around 4 cm and multiple tendrils winding their way up into the canopy. I spent a good few hours working on it and removed a total of 263 pods – incredible.

### Other News

Whangārei based business Land Pirates came through with a very good price for our new galvanised trailer axel. A very big thank you to Jerry Pauli for donating an additional Wiltshire sheep to add to the Matakoho flock.

Kia ora,  
Jo and Darin



Giant Moth Plant stem

## Venues available for hire in Onerahi, Parua Bay and Whangārei Heads area

Onerahi Community Hall & Community House	Rose Tantau	ccoca@extra.co.nz   021 157 0980
Onerahi Bowling Club	Roger Kerr-Davis	027 390 7185
Onerahi Rugby Club	Fiona Raymond-Paikea	onerahirugby@yahoo.com. The Onerahi Rugby Club has had a recent facelift and renovation, and is available to other clubs and sports groups to use - please call us on 021 228 5982.
Onerahi Soccer Club	Fiona Ellis	onerahifootballclub@outlook.co.nz
Hope Church	Secretary	09 438 1667
Raurimu School Hall	School Office	09 436 0820 Ext. 2
St. Stephen's Church Hall	Paul Doherty	021 189 4797 or 09 436 0207
Tamaterau Hall	Dorothy Gatland	021 119 0089
Parua Bay Community Centre	Kirsty	<a href="mailto:bjandkirsty@slingshot.co.nz">bjandkirsty@slingshot.co.nz</a>
McLeod Bay Hall	Norma	09 434 0909
Taurikura Hall	Meg Mclsaac	09 434 0096
<b>Whangārei District Council Hotline: 0800 932 463</b>		<b>Onerahi Police (09) 436 0222</b>



Download your own copy of tides tables for Northland at <https://www.nrc.govt.nz/resource-library-summary/publications/coast/northland-tide-tables/>



Whangārei harbour, compliments of Google Earth. Note the channels

**Onerahi Community Church Night School**  
Raurimu Ave School Hall - 7pm  
3rd SUNDAY of each month  
**TOPIC: Current Events & the Bk of Revelation**




hello.onecc@gmail.com

## Upcoming dates and events

Early June	Register for Matariki Festival - If you have an event that celebrates Matariki and is scheduled between 26 June and 23 July 2023 then be sure to register with the Whangārei District Council for free advertising
Monday 5 June	King's Birthday - Public holiday. Also World Environment Day
Tuesday 6 June	A CommUnity After Five Event - Presentation on Event Requirements from WDC staff; 5:30-7:00 pm at the Cafler Suite, Forum North, 7 Rust Avenue
Saturday 10 June	Pohutukawa Coast Project - GET FREE PLANTS! Two free plants to each household in Whangārei will be available from 10 June. Contact details for WDC distributors will be available from 9 June on Council's website (www.wdc.govt.nz) and Facebook page (www.facebook.com/WhangāreiDC)
Wednesday 14 June	World Blood Donor Day
Tuesday 20 June	Onerahi Community Association AGM
Saturday 24 June	Whangārei Volunteer Fair - a day focused on Mahi aroha, volunteering and recognising those who have come before us. Whangārei Central Library, 9am to 12.30pm
24 June - 22 July	Whangārei Matariki Festival - check out brochures available in town and the <a href="https://www.wdc.govt.nz/Events/Whats-On">https://www.wdc.govt.nz/Events/Whats-On</a> page for events such as community planting days, light shows, markets, exhibitions, kapa haka, star gazing, Māori arts demonstrations, and more
Friday 14 July	Matariki - public holiday
Saturday 15 July	Hospice Awareness Week starts
18 July	A CommUnity After Five Event - Presentation on Event marketing / promotions. 5:30-7:00 pm at the Cafler Suite, Forum North, 7 Rust Avenue

## Regular events

Jolly Dodgers Scooters	The Jolly Dodgers scooter group - If you are keen to join up call Wendy on 021 031 7781 or Denise on 022 087 4955
Love Whangārei Monthly Clean Up	We love Whangārei and we love living in a clean environment. Come with us and help keep it that way! Check our FB page for upcoming events. <a href="https://www.facebook.com/LWMCU">https://www.facebook.com/LWMCU</a>
Matakohe/ Limestone Island Volunteers	Matakohe/ Limestone Island volunteer day is on the first Wednesday of every month. The group leaves from the Onerahi Jetty at 9 am. Volunteers work on a variety of jobs to suit whatever volunteers feel like doing. A happy bunch! Bring your lunch. Home by 2 pm.
Onerahi CoastLine Action Group	Volunteers meet for an hour per week (currently on Sunday evenings, 7- 8 pm). Would you like to join us? Contact Valerie Green-Moss 021 067 2760 or Brian McLachlan 436 3660.
Onerahi Sit-Fit	Hope Onerahi Church, 137 Onerahi Road, Mondays 10.15 am
Onerahi Hall market	Saturdays 8 am-12 pm until the last weekend of the July school holidays (Sat 15 July) then fortnightly with NO markets on Sat 22 July and 12 Aug. Plants, garden produce, jams/pickles, art/craft, 2nd hand goods etc. Inside stall fees \$11; Outside stall fees \$8; Kids stall fees - inside \$5, outside \$4. Call Jenny (09) 436 0009.
Onerahi Family Fishing Club	Held at Onerahi Tavern (Beach Road). Contact Pete Codlin at the tavern.
Onerahi Darts Club	Ages 14+ welcome. Held at Onerahi Tavern in the Portland Lounge on Tuesday nights (contact Kelly Codlin at the tavern)
Whangārei parkrun	A free, fun, and friendly weekly 5 km community event. Walk, jog, run, volunteer or spectate – it's up to you! Every Saturday at 8:00 to 9:30am, start from Port Road (under Te Matau A Pohe bridge). See <a href="https://www.parkrun.co.nz/Whangare/">https://www.parkrun.co.nz/Whangare/</a> for details
Whangārei Scottish Country Dance Club	The Scottish Country Dance Club meets every Thursday at the Onerahi Community Hall at 7.30pm. All are welcome. If you want to know more before arriving, call Fiona on 437 1817

**Want your free community or sporting activities highlighted here? Let us know when and where by emailing [onerahiorbitmagazine@gmail.com](mailto:onerahiorbitmagazine@gmail.com)**

**Onerahi Orbit is not responsible for any events listed here that are cancelled for any reason. Please check with local event organisers to see if the event is confirmed or cancelled**

# NATURES THERAPEUTICS

its not magic, its nature®  
ehara i te mahi tūmatarau, ko te āo tūturu

1/30 Rathbone Street  
next to Westpac  
**WHANGĀREI**

09 988 9414  
Email: [contact@naturestherapeutics.co.nz](mailto:contact@naturestherapeutics.co.nz)  
Website: [www.naturestherapeutics.co.nz](http://www.naturestherapeutics.co.nz)

### COVID FLU & COLD

respiratory conditions



4 sizes from **6.90**

### ARTHRITIS RHEUMATISM

deep tissue / joint pain



100ml **23.90**

100% NATURAL

### ECZEMA DERMITITIS

skin conditions



3 sizes from **11.90**