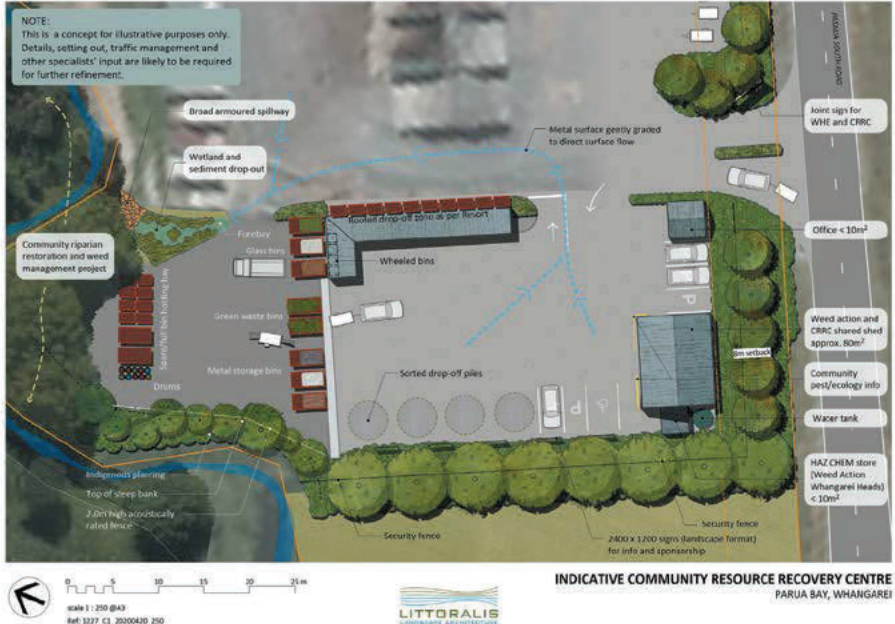


Onerahi Orbit

Free to you from the Onerahi Community Association Inc. October & November 2020

A New Approach to Reducing Waste to Landfill



Waste is polluting our land, our lakes and rivers, and our coasts and oceans, and we have one of the highest rates of per capita waste production in the developed world. Waste is one of the big areas of focus for the Ministry for the Environment and they have highlighted that major changes are required to be more efficient with resources to reduce waste to landfill.

The reality is that many resources sent to New Zealand landfills could be recycled, composted or reused. There are many reasons why this is not happening. The main ones are lack of incentives, and lack of easy, readily available alternatives. The relatively low cost of disposal to landfill and the higher cost of recovering and recycling materials leads to products that could be recycled being taken to landfill.

Locally, with a growing population and visitors and the closure of the Parua Bay Transfer Station in April 2019, the setting up of Whangarei's first Community-led and operated Resource Recovery Centre (CRRC) is well timed to deliver a new approach to offer practical and cost-effective solutions to reduce, repair, re-use and recycle valuable resources, and responsibly manage green waste.

After extensive community consultation undertaken by the Whangarei Heads Community Resource Recovery Charitable Trust the overall response from the community has been overwhelming in support of the proposal to establish a CRRC at the Whangarei Heads Enterprises site (35 Pataua Road, Parua Bay).

One of the biggest challenges for the Trust is changing the perception that

this facility is a 'dump' or 'rural transfer station'. No rubbish will be accepted on site, a range of materials including appliances, electronic waste, building materials and green waste will be accepted, all materials will be properly stored, contained and/or baled on site, we will provide information and encourage sustainable resource use and the site will provide a much needed 'base' for Weed Action Whangarei Heads' operations.

It has been a long process and we hope that with the overwhelming and growing community support, and with Council's support, this proposal will become a reality.

If you would like any further information please email Melissa Arseneault (Trustee) email grassroots63@outlook.com

Kia Ora

Welcome to another issue of your local magazine. We are sad to let you know that the Onerahi Community Association's Secretary, Leonie Robertson, died suddenly in early September. You can read tributes to her by OCA Chairman and Whangarei District Councillor Nicholas Connop, and Rose Tantau, OCA Treasurer, on the back page, alongside a photograph of the OCA Committee, taken at the Christmas festival. Leonie is there in the centre, as she was with all things Onerahi. Her death has left a huge hole in the Onerahi community, and also in the Community Association, as her role as Secretary is now

vacant. If you are keen to be involved in your community and are able to donate some time to filling this space in the OCA, please get in touch (contact details below); or if you know someone who you think may be interested in the role, please pass this invitation on.

Meanwhile, stay safe, be kind, and enjoy spring.
Nga mihi from the Orbit team,

Heather, Megan, and Shona.

Contents

Onerahi Volunteer Firefighter Jeff Pipe.....	3	Mariameno Kapa-Kingi, Maori Party Electoral Candidate... 11
Onerahi Primary School News.....	4	Kerry Campbell, New Conservative Electoral Candidate... 12
Raurimu Primary School News.....	4	Whangārei's Oldest Art Space, Reyburn House..... 12
Spring Gardening.....	5	W.H.A.T. to exhibit at Reyburn House..... 14
WDC Councillor Nicholas Connop.....	6	Book Review: More True Tales of Onerahi..... 15
RDC Councillor Amy Macdonald.....	7	WDC Councillor Vince Cocurullo's Technology News..... 16
Onerahi Volunteer Fire Service Round-up.....	8	Tides Tables..... 17
History: Who Paid For Onerahi?.....	9	Local Photographer - Stacey Townsend..... 18
Dr Shane Reti, National Party Electoral Candidate.....	10	Obituary: Leonie Robertson..... 20
		Local Venues for Hire..... 20

ADVERT SIZES & COSTS:

		BLACK & WHITE	COLOUR
Full page	270mm high x 190mm wide	\$600	\$900
Half page	270mm high x 90mm wide OR 135mm high x 190mm wide	\$350	\$520
Quarter page	135mm high x 90mm wide OR 64mm high x 190mm wide	\$180	\$250
Eighth page	65mm high x 90mm wide	\$ 85	\$150
Block advert	40mm high x 60mm wide	\$ 40	\$ 75

GST not applicable. Invoices will be emailed or posted after the publication date.

Electronic version of the Onerahi Orbit also available at: <https://www.issuu.com/onerahiorbit>

Published in April, June, August, October, and December.

The Onerahi Orbit is a not-for-profit publication that concentrates on reporting the GOOD NEWS in Onerahi, Parua Bay, Whangārei Heads and Pataua. Produced by the Onerahi Community Association every two months, it has a print run of 4100 copies and a readership of about 12,500. Printed by Jeff Oliver Print.

Follow us on Facebook www.facebook.com/onerahiorbit

Editor: Heather Bell 027 421 7849
Email: onerahiorbitmagazine@gmail.com

Advertising: Shona Beeston 027 654 3999

Design: Megan Lavin-McIsaac 022 641 9786
Email: graphics@megatype-publishing.co.nz

Accounts: Rose Tantau 438 5499
Email: ccoca@xtra.co.nz

Deliveries: Bob Smith 436 3681

VOLUNTEERS REQUIRED!



We need delivery people to drop off the Onerahi Orbit in their local area. The Orbit comes out five times a year.

If this sounds like you, or someone you know, please call Bob Smith on 09 436 3681.

Onerahi's Volunteer Firefighters: Jeff Pipe

I met Jeff in July at the Onerahi Community Association's AGM, where he was elected onto the OCA Committee. It was suggested that the Onerahi Orbit might like to run a series profiling our volunteer firefighters who work out of Onerahi Fire Station, as many have interesting stories to tell.

Jeff and his wife Valerie have been Onerahi residents for five years. They discovered Onerahi on a campervan tour of Northland and loved the place, with its surrounding harbour and small, friendly community, so decided to move here from Christchurch. They like the seaside lifestyle, and Jeff launches his tinny at Parua Bay to go fishing.

Jeff also has a commercial property maintenance company that he tries to keep part-time; his customers find him by word of mouth. Three years ago he went, with two real estate agents, to maintain a property at Mount Tiger, and became involved in a tragic incident. Jeff was shot twice by the tenant, but considers himself lucky as the two agents, who were personal friends, both died. He has

since been invited to speak to groups about this tragedy.

Jeff first joined the volunteer fire service as a young man, when he and Valerie lived in Golden Bay. Their house was beside Takaka Fire Station, so he joined up, underwent training, and over the next three years found that being involved in the Fire Service was a great way to become part of the community and help people.

"You're there to help someone who's got themselves in a difficult predicament, like a motor vehicle accident, or a fire, and that's what we're there for: to help someone in a jam."

Decades later Jeff noticed Onerahi Fire Station on a morning walk around his seaside semi-retirement suburb, and thought he would join up next year. Someone noticed him peering through the window, and invited him along to the next Monday night meeting.

That was three years ago, and since then Jeff has been one of Onerahi's 22 committed Fire Service volunteers. "The crew down at the Station is like my family," he told me.

Happy as a firefighter, Jeff



said he had never wanted to go up in the ranks. Looking to the future though, he is considering completing training to become a driver/pump operator to extend his longevity in the Service.

Jeff told me he really enjoys doing Fire Service school visits and puts his

hand up to take part in this outreach role, raising fire safety awareness and giving school children the thrill of getting into the fire engine and seeing the world from the driver's seat. Hopefully they'll be our future firefighters.

Heather Bell

HERMAN TIMBER LIMITED

Timber for sale

- Pine Timber untreated and treated, rough sawn and machined.
- Fence Battens
- Decking Timber

Sawmill machinery for sale

- Bandsaws
- Breast Bench Saw
- Wood Chipper
- Electric Motors
- Planer Machine

Macrocarpa slabs and Japanese Cedar Timber

FACTORY LANE, HIKURANGI 0114 • PHONE: 09 433 8555 • EMAIL: NOELHERMAN@XTRA.CO.NZ

School News

ONERAHI PRIMARY

By Raif, Year 6

At Onerahi School we have been doing lots of exciting stuff like Keeping Ourselves Safe. We are learning how to be safe online and in life in general. We have been learning about digital citizenship, including making posters so other people can keep themselves safe.

We had an amazing handball competition. This

was organised by kids and happened during break times. Next up the teachers are versing the students.

We opened up our sport shed so children can use sports gear at break time again. This is also run by the kids. People have been kicking, throwing, smacking, skipping, and falling over everywhere!

Another thing we have been doing is reciting plays. We are going to present these to the school very

soon. It's going to be an extraordinary performance.

As you can see, kids have a big job in running things at

our school. Until next time, remember to keep yourself and others safe.



The student-led handball tournament.

RAURIMU PRIMARY

The focus for this term has been on the environment and predators within. The Year 5 and 6 students are now the proud keepers of two beehives. These beekeepers are working with Tahī Honey to learn about life cycles, honey production and the

amazing work these bees do. Year 7 and 8 students have joined forces with Predator Free Onerahi and have been working along the Waimahanga Track laying bait strips and checking these frequently to see where the majority of the predators on

the track populate and how to control them.

Year 3 and 4 students have been experimenting with growing seedlings and feeding them with different sources of nutrients, or lack of nutrients. Water, coffee and fizzy drink have been

used as liquid sources and high sunshine areas versus low sunshine areas have produced some interesting results.

The year 1 and 2 students have painted pots and planted seedlings which, when ready, were transplanted into the raised garden beds and they have had their first crop of lettuces go home to share.

Students have enjoyed being out in the gardens and take pride in seeing their work produce results which can then be shared with whānau.



Our beekeepers.



Keeping the school gardens tidy.

Spring in the Garden

Gardeners love spring - September, October, and November are the months when we sharpen our spades, pull on our gumboots, watch new buds swell and burst, and declare war on slugs, snails, and weeds. After an hour outside in the dark with a torch recently, plucking slimy creatures off my precious plants, I'd almost filled a one kilo yoghurt pot. With the lid clamped on, the slithering mass went into the freezer - I'm told that freezing is the kindest way to kill them. After 48 hours on ice I buried the frozen block in a hole - good fertilizer for the plum tree.

After last year I'm getting ready for another long hot dry summer - choosing ornamental plants like clivias, gazanias, and renga renga lillies, and native trees and shrubs that do well in dry conditions - and spreading mulch thickly to prevent the earth from drying out. I'm also figuring out the best way to reuse laundry water for plants. Catching rainwater would be even better, but would mean installing a barrel and diverting downpipes. Maybe later.

Volunteer Buck Cullen showed me around the Wai Ariki Food Forest Onerahirahi (across the road from St Stephen's Church in Whimp Ave), last week - the July floods had caused land slips and washouts along the creek bank, but weirs and silt traps that have been built along the creek had slowed the water flow, as they were designed to, preventing worse damage. Hard work and hand shovelling is gradually returning the earth back up the hillside it came down from, to fill new terraces; and fish could be seen hovering in clear healthy water.

In the food forest, fruit trees and vegetables are springing into growth - lettuces, herbs, artichokes, plum and apple trees, grape

vines, banana groves and more - all are flourishing and producing food for the local community.

This precious community garden is tended by a team of volunteers, and welcomes new helpers more than ever at this busy time of year. Drop in any time to see what is happening, especially if you'd like to help this garden grow.

Heather Bell



KIWIKIDS
EARLY LEARNING CENTRE

"Providing for the healthy bodies and healthy minds of our kiwi kids"

PH 436 3085
www.kiwikidselect.co.nz

4 Waimahanga Rd, Onerahi

onerahi physio.

Elsbeth Sugrue
Taylor Wilkes - Nicole Dempster
Garby Smith - Ricky Brijs-Blaak (Locum)

Onerahi Shopping Centre
Call us on 4360919 for an appointment
No GP referral required www.onerahiphysio.co.nz

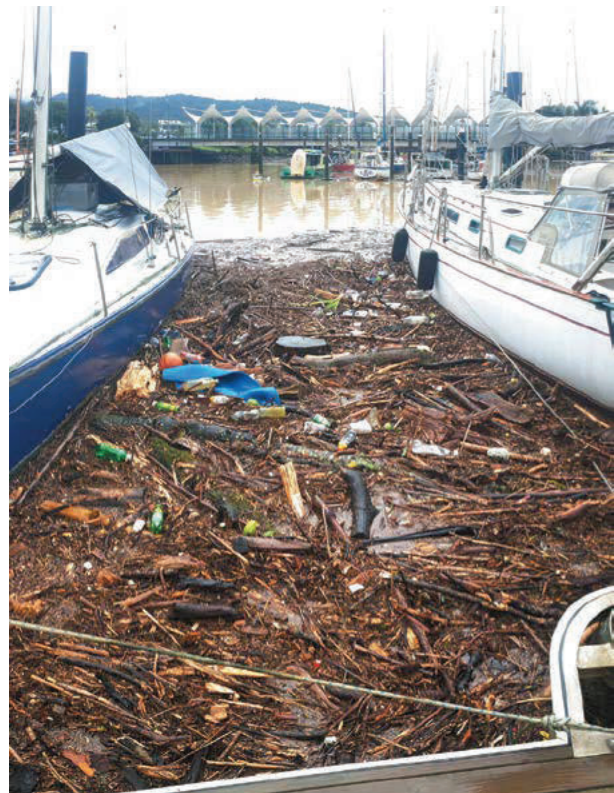
NEW WORLD Onerahi

Open from

7.30am to 8.00pm Monday to Friday
8.00am to 8.00pm Saturday to Sunday

Phone 09 436 8008

Whangarei District Councillor, Nicholas Connop



Town Basin flood debris

I hope you were able to make a positive impression on someone's life since last time we met. The amazing amount of damage that happened as a result of flood water impacting on the dry conditions we have had in Northland provided us with that opportunity.

It was great to get the Onerahi Civil Defence volunteers organised in such a short space of time. We have the Onerahi Hall by the New World Supermarket as a Civil Defence location to assist those in need, if worse comes to worst.

The Onerahi Civil Defence Volunteer group has three meetings a year, and is keen to get a few more active members around the Onerahi community to ensure we can support each other. Phone me if you are interested in joining: 021-453-912.

Damage from the storm has resulted in over \$8 million of repair costs and this is on top of normal work efforts. The contractors have been going hard to get the health and safety of areas around the district up to a safe standard, but that does



mean we have to put up with some superficial debris in the meantime. Most of the work will take until the end of the year to get back to a reasonable standard.

COVID-19 and the flooding have shown some of our weak points but also strength with those directly around us.

Do you know your neighbours? How about introducing yourself, and building those relationships into a strong community with resilience, trust and support.

"Unless" The Lorax

Northland Regional Councillor, Amy Macdonald



Kia ora Onerahi community!
How wonderful that spring is here, I'm loving the longer days and the scent of wild freesias that pop up along Onerahi's grassy banks.

I had a great morning in the sunshine at Onerahi's Saturday market last month, supporting the Predator Free Onerahi project. Dai and Bevan were busy talking to members of the community and providing advice and free rat traps for Onerahi residents. I recently read an account of the benefits of a similar community pest control project for boosting the local birdlife in Kerikeri. The article was inspiring, the people spoke of the thriving birdlife and the connection and community spirit that has grown through the project. If we work together here in Onerahi we can achieve similar benefits for nature and also for our people.

To users of the local bus services, thanks very much for following the new rules regarding face coverings - all passengers must wear a mask, scarf or similar (children under 12 are exempt). We are getting good reports of bus passengers masking up, and appreciate our bus users doing the right thing to look after themselves, our drivers, and other bus passengers.

Here at the Regional Council we are in the early stages of

our Long Term Plan process, where we revisit our 10 year vision and plan for Northland. As part of this review we seek your input to where we're heading as a region, and the work we should do to get there. We've done some market discussion events and online surveys, and will continue to find ways to hear what's important to you. You can learn how to get involved via the NRC website, or you are welcome to email me directly and I can pass on your thoughts and connect you up with opportunities for input - amym@nrc.govt.nz.

Enjoy the sunshine!

Nga mihi

Disclaimer - this is my personal opinion and not that of the Northland Regional Council



"Please cremate me. Don't put me in the ground where someone may dig me up if you move house."

The team at Stardust will give me a dignified farewell.

Stardust Cremation Services

201 Te Rongo Road, Parua Bay

Phone 09 436 1333; Mobile 0274 960 462

Email stardust@xtra.co.nz



Maximise your property's net sale price without having to compromise on quality or service

1.95%

Super low selling fees

Call Tracey Lovelock-Butler
027 8595 777
tracey@maximise.co.nz
Licensed REA Act 2008

Predator Free Onerahi Community Meeting

10-11am, Saturday 31st October, Raurimu School Hall

Tiakina Whangārei is supporting the Onerahi community to become predator free so birds and other native species can thrive! Come along to our first community meeting to find out more.

info@tiakinawhangarei.co.nz • www.tiakinawhangarei.co.nz

MPC COMPUTERS

SALES :: SERVICES :: SOLUTIONS

- Laptop/Desktop Repairs
- Hardware and Software Sales
- Web Hosting & Domain Names
- Home and Office Networking
- Confidential Callout Service

Shop Online for your convenience: www.mpccomputers.co.nz

Call Mike 434 0229 • 021 136 4637
email: mike@mpccomputers.co.nz

BRUCE WEBB GLASS

Independent Glazier

FAST PANE RELIEF SERVICE

phone **438 4332**
mobile **027 492 2772**

Funeral Trust
www.fdanzfuneraltrust.co.nz
Prearrange your funeral today with your FDANZ Funeral Director

Morris & Morris Funerals
HONOURING LIVES FOR GENERATIONS

For more information about funeral planning and prepayment options, please contact
Morris & Morris Funerals
office@morrisandmorris.co.nz
www.morrisandmorris.co.nz
09 437 5799

Onerahi Pharmacy

116 Onerahi Road
Phone: 09 436 0567
www.onerahipharmacy.nz

care + advice **Unichem**
Your local health professional

Next Generation of Wireless Security Systems
Contact United Security Services
ask about the next generation alarm system
09 4302303 or sales@unitedsecurityservices.nz

4 FOUR SQUARE
PARUA BAY
09 436 2740
1379 Whangarei Heads Road, Parua Bay 0174

WELCOME TO OUR FOUR SQUARE

We're proud to be part of the long-standing iconic Kiwi brand that has been the local for New Zealand communities since 1924.

So whether you're keeping it local, or on tour, we're here to make it easy for you. Become a local, and shop where all Kiwis love to shop.

Always welcome. Always local. Always Four Square.

Hours:
Mon-Fri: 7:00am – 7:00pm
Saturday: 7:00am – 7:00pm
Sunday: 8:00am – 7:00pm

Wills Westenra
LAWYERS

WHEELCHAIR ACCESS
Specialising in Family Law, Conveyancing, Commercial Law, Wills, Trusts and Estates, Enduring Power of Attorney and welfare and property orders

Megan Wills LLB, BA
Bridget Westenra LLB
Maria Davies LLB (Hons), BA
Helen Kaimarama LLB, BA
Kayla Herbert LLB
Jasmine Kim Dip.Law

www.willswestenra.co.nz

Level 3, Tai Tokerau Building
5 Hunt Street, Whangarei
Phone 459 7000

BLINDS SHUTTERS & CURTAINS WHANGAREI

Rollers Venetians Verticals Shutters Curtains
Free in-home measure & quote
Free Installation

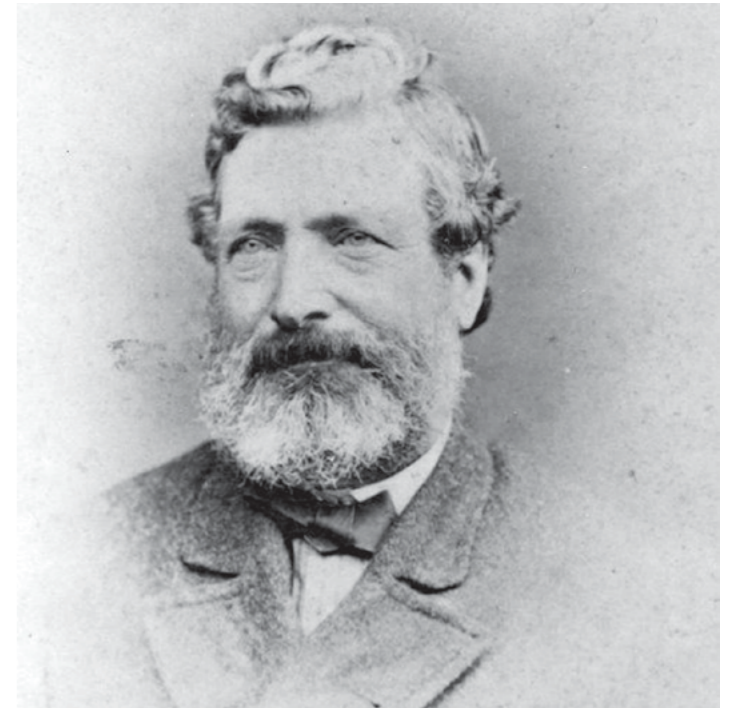
Phone 09 430 3535
Mob 0211 95 35 35
gail@blindsandshutters.co.nz
www.blindsandshutters.co.nz

Who Paid for Onerahi?

Don Armitage

Watching over the side of the 22ft yacht Deseree as one of my high school friends Peter, his father George (who preferred to be called by his middle name, Rogan), and I sailed into the shallows with centreboard raised, up an estuary against the just-turned outgoing tide which cancelled out the progress gained by the minute amount of wind. I remarked to Mr Hampson that the snail I could plainly see over the side was actually moving forward along the bottom faster than we were moving.

That was in 1965 or 66. He reminded me of it forever more. When he had been about my age he had been a cub-reporter, and was told to attend the hanging of 41 year old John Edwards at Mount Eden Prison in Auckland in December, 1933. His family thought it affected him in some way, for less than three years later he wrecked his 16ft yacht on Ocean Beach, just north of Whangarei Heads, while heading on his way solo across the Tasman to Australia in mid-winter of 1936. His story of the (very fortunate) shipwreck is in True Tales of Whangarei Heads. He later went to war in Europe and endured the invasion of Crete by German paratroops, where he was wounded; and other battles. He later became a teacher and was a very fine fellow. What terrors he experienced in his young life.



John Rogan (1822-99).

But what on earth has he got to do with who paid for Onerahi? Well, it's like this - George Rogan Hampson's mother, Katherine, was the daughter of John Rogan (1822-99), who was the land commissioner charged with purchasing Onerahi on behalf of Her Majesty, Queen Victoria. Which is what he did.

- » Business Cards
- » Flyers
- » Posters
- » Vinyl Labels
- » Books
- » Magazines
- » Letterheads
- » Folders
- » Invoice Books
- » Calendars
- » Pads
- » Rack Cards

AND MUCH MORE!
ALL WORK GUARANTEED

0800 141 402 /jopprint
info@jop.co.nz • www.jop.co.nz

JOP
design | print | distribution

Collier & Jones
DENTURE CARE
09 438 8076 / 114a Bank St,
(Opp Jimmy Jacks)

NEW DENTURES Whatever your needs are in the way of dentures, talk to us!	OLD DENTURES ✓ Relined ✓ Repaired ✓ Cleaned
--	---

**• Free Examination • No Obligation • Quality Assured •
• Eftpos Available • Winz Quotes •**

MASSAGE THERAPY

Wendy Huddleston
(Dip in Massage • Dip in Sport)
Gift Vouchers Available
ph/txt 021 767 887



DR SHANE RETI
MP for Whangarei

Working together

A | 105 Cameron Street, Whangarei
 P | 09 438 9992
 E | shane.reti@parliament.govt.nz
 W | shanereti.national.org.nz

Funded by Parliamentary Services & authorised by Dr Shane Reti, 105 Lower Cassington St, Whangarei



Dr Shane Reti

Whangārei nominee for the New Zealand National Party

The night before Auckland went into lock down three weeks ago, I was urgently called to Wellington. Parliament was required to resume sitting and I needed to be there to help pass any legislation required for the second

coronavirus spike that still has us all at Level 2. In Wellington, I continued my role as your representative, critiquing and collaborating with the government towards the best outcome possible.

Outlining the main points from the last speech I gave in the House on the day Parliament finished, I want to identify five gaps in the current response that would lift our collective bar. I am calling these "five in five" because I believe these five proposals could also be completed in five days.

The first proposal is to retest people for genomics within 24 hours of every positive case - the problem to solve here is that only 50% of samples have been genomically sequenced.

The second proposal is to require a negative coronavirus test turn-around time of 48 hours - the problem to solve here is the number of days people must wait for a negative test result.

The third proposal is to require the recording of people, who have been declined tests, to be detailed in the National Contact Tracing Solution. This is important because we may have people who turn up for testing who have failed the case definition, but subsequently test positive and we want to be able to improve the case definition.

The fourth proposal is to make day-three managed isolation testing compulsory. The problem we are clearly trying to resolve is that the sooner we identify positive cases who have crossed our border, the more effective and safer our response is.

The fifth and final proposal is to use the COVID-19 app to generate a "quick response" (QR) code that displays information at every user interaction with the coronavirus response. The problem for solving here is the time-consuming task of identifying people at each interaction with the coronavirus response. For example, a QR code that had your health index number would remove much of the wait at testing stations.

Five proposals in five days to plug five gaps in the COVID-19 response.

Think ahead.

Party Vote Green.

Authorised by Owen Shaw, Level 1, 17 Garrett St, Wellington



NEW CONSERVATIVE
www.newconservative.org.nz

STRENGTHENING FAMILIES

DEFENDING DEMOCRACY

DOING WHAT WORKS

Your Nation | Your Voice



Authorised by K. Campbell 745 Whareora Rd Whangarei

Kerry Campbell

New Conservative Electoral Candidate

As the New Conservative candidate I urge you to give your party vote to N.C. because we will strengthen families, buttress democracy, and uphold New Zealand sovereignty.

The largest slice of Crown expenditure for the 2018/19 financial year was social security and welfare at \$34 billion.

About 42% of that was spent on superannuation leaving 58% to support families. This is independent from spending on health and education.

It's huge.

Those needing most support are raising families without fathers, without a regular wage earner, caring for families that are ravaged by violence, substance abuse, sexual abuse and those subjected to the generational consequences of a lifetime of poor choices.

New Conservative recognises not only the tremendous cost to the social fabric of New Zealand, but the ongoing and exponential cost of dysfunctional families on the NZ taxpayer. Strong, healthy families mean a vibrant, benevolent culture exempt from the spiralling cost of state dependency inevitably leading to generational dependency, loss of dignity, a proliferation of purposelessness, suicide and abuse of every



stripe. All of these issues are related strongly to the physical, mental and spiritual health of families. New Conservative has policies such as income splitting (providing a social incentive for relationship longevity), first \$20,000 tax free, and policies designed around helping people get beyond dependency, into stable relationships. We believe in respect for the taxpayer, and personal responsibility within families and limited government.

Vote New Conservative. Vote change.

Young New Conservative

Young Conservative is the supporting youth membership of New Conservative. Not only does New Conservative have young supporters and members all around the country, we also have some young candidates - with more on the way.

Alister Hood, Benjamin Price, Caleb Ansel, Caleb Honiss, Dieuwe de Boer, Josh Honiss, Liam Richfield, and Okusitino Paseka are our selection of fine young candidates for this election.

We adhere to the principles and policies for which New Conservative stands, strongly advocating youth to stand for what they believe in, not what they will tolerate. We believe in personal responsibility, limited government, free markets, individual liberty, traditional family values and a strong national identity.

Authorised by K Stitt, 35 Lenore Rd, Auckland.

CANDIDATE FOR TE TAI TOKERAU

Kia ora mai rā e te iwi.

I am deeply invested in our people and our prosperity. For many years I've worked within Māori health providers and iwi social services. I believe it is my duty to care for and empower whānau Māori to become the best versions of themselves. I see this both as a reflection of how our tūpuna existed in their own world, as rangatira, and as the model for Te Iwi Māori going into our future, through our mokopuna.

Māori in Te Tai Tokerau are absolutely capable of looking after their own. We implemented and demonstrated that in response to this global pandemic. The Māori Party will determine that becomes a normalised reality.

My priorities for Te Tai Tokerau are:
Mokopuna Māori | Employment | Mental Health | Housing

My goal is to promote whānau first and the practice of mana Māori motuhake.

I believe in us and you must too.

Mauri ora!

Mariameno Kapa-Kingi

Te Aupōuri, Te Rarawa, Ngāti Kuri,
Ngāti Kahu ki Whangaroa, Ngāpuhi Nui Tonu

Authorised by M. Kapa-Kingi, 17 Cockburn St, Onerahi, 0110, Whangarei



māori

Whangārei's oldest art space: Reyburn House Art Gallery & Studios

Over sixty years ago a group of enthusiastic, vibrant individuals at the forefront of the local arts scene started the Northland Society of Arts. Their aim was to support each other and promote Northland's art and artists.

The Society got off to a flying start and soon needed to look for headquarters. Historic Reyburn House, which had been the family home of Robert Reyburn Jr, was offered, and after being lavished with much love and care, this Historic Places Trust-listed building (built 1870 - 1910), became a showcase for Northland's artists. Being an ex-family home means there are several exhibition rooms in what were the living spaces, where artists can exhibit individually or together, in a venue next to the Town Basin playground. Reyburn House Gallery is a convenient and much-loved stopping point or meeting place, where people walking the Hatea Loop can pop in to view the latest exhibitions.

Next door to Reyburn House Gallery is the Reyburn Art Studios building, where classes are held and spaces are available for hire. The Society's Board is determined to keep hireage affordable so that art and art making are accessible for everyone.

In 2019 the NSA Board decided to update Reyburn House and Studios. NSA Board member and Exhibition Coordinator, Wendy Cunliffe, and many volunteers, have set about reworking the Gallery's interior, and updating the Art Studios'

facilities. Wendy and her team install new exhibitions every few weeks, keeping fresh work on show and for sale, and showcasing members' talent.

Like many similar organisations that rely on their community's support, Reyburn House has felt the financial effects of recent events, and is considering future options. You can help keep Whangārei's founding art gallery going by coming along to exhibitions and openings, joining the Society, holding an exhibition, running a class, joining a class, buying from the Gallery shop, or donating.

Reyburn House Gallery and the NSA would love your support.



Reyburn House from the street side



Reyburn House from the harbour side

Northland Society of Arts
UPCOMING EXHIBITIONS
Reyburn House

- **WHANGĀREI CAMERA CLUB:**
Tues 13th October - 1st November (3 weeks)
- **FIREBIRDS POTTERY:**
Tues 20th October - 1st November (2 weeks)
- **W.H.A.T (Whangārei Heads Art Trail):**
3rd November - 29th November (4 weeks)
- **Northland Society of Arts Members Exhibition:**
1st Dec - 10th Jan 2021 (6 weeks)

www.treework.co.nz Branching Out Tree Care Ltd
Tree Care Specialists
Qualified Arborist
Ambassador for Trees - NZ Consultants, Practitioners & Data Collection

Arborists – Tree Surgeons
Phone us for prompt, personal services & quality workmanship

- All Aspects of Tree Work
- Complete Removals & Cleanup
- Experienced & Qualified Crew
- Horticultural Industry Trainer
- Stump Grinding
- Public Liability Cover
- Chipping & Mulching
- Specialist Climbing Team
- Large and Difficult Trees
- Single or Massive Projects
- Will beat other Quotes by 5%

www.treework.co.nz
09 436 4466
Mobile: 027 565 7794 or 0508 ARBORIST
Email: p_r.gosling@xtra.co.nz (272 67478)

PAUL GOSLING – ARBORIST

NEWBERRYS FUNERAL HOME

Serving Northlanders since 1866.

Have you had that difficult discussion with your family?

Do you have you a Pre Need plan in place for your funeral?

Plan the farewell you would want with the funeral home that has been here since the days of the covered wagon.

NZ IFH
NEW ZEALAND INDEPENDENT FUNERAL HOME

Get your Pre Need Pack today
438 2644
or email newberrys@xtra.co.nz
www.newberrys.co.nz

FLAMES
RESTAURANT, BAR AND GRILL

Open daily for breakfast and dinner

Featuring exciting seasonal menus, utilising delicious locally sourced produce in delightful taste combinations

Open 7 Days a Week • Closed Public Holidays
Breakfast Mon to Fri 7 – 10am • Sat/Sun 7.30 – 10.30am
Dinner 5.30 – 8.30pm
8 Waverley St, Onerahi – 436 2107 – info@flameshotel.co.nz
www.flameshotel.co.nz

WHANGAREI HEADS LANDSCAPE & SUPPLIES

- Aggregates • Garden Supplies
- Hire Equipment • Posts
- Firewood • Fencing Material
- Water & Drainage Pipe • Timber

09 436 5638

35 Pataua South Rd, Parua Bay

Open 8am – 5pm. 7 days.
email: whlas@xtra.co.nz,
A/h: Charlie 027 552 2045.

automotive solutions

Onerahi Garage

WOF, REPAIRS,
SERVICING, CAMBELTS,
TYRES, BATTERIES,
BRAKES, WELDING,
NEW TRAILER SALES
PICK UP/DROP OFF, COURTESY CARS

1 CHURCH ST ONERAHI
T. 09 436 5971

automotive solutions GROUP

E. admin@onerahigarage.co.nz

Creative Heads at Reyburn House

Services

Rawleigh's
HEALTHCARE
COLLEEN DAVIES
INDEPENDENT RAWLEIGH'S DISTRIBUTOR.
Phone. 09 4340920 • 0212861788
Email cdandod@gmail.com

09 436 0150
09 436 5613
W.H.A.T. AUTOMOTIVE
Your local professional automotive repair centre.
whangarei.heads.autos@gmail.com
www.whatautomotive.nz

Church Services

RAUMATI CRESCENT CHAPEL

SUNDAY 9.30am Communion Service
11.00am Teaching Ministry

MONDAY 10.15am Sit Fit

WEDNESDAY (2nd) 10.30am Ladies' Bible Study
(4th) 10.30am Ladies' Friendly Hour

THURSDAY (every 2nd) 1.30pm Knitting Group
wool donations gladly accepted
contact Maureen at 436 2355 for info.

HOPEONERAHI
PRESBYTERIAN CHURCH
135 Onerahi Road • Office: 438 1667
Sunday Worship @ 9.30am. All Welcome!
Mainly Music in the Church Hall – Every Wednesday
10am (during school term). \$4 per family
Contact Nancy Dodds - 436 1444

Whangārei Heads Art Trail is delighted to announce our up and coming Reyburn House exhibition 'Creative Heads', which will be open from Tuesday November 3rd through to Sunday 29th November.

The exhibition will feature the work of 31 Whangārei Heads artists, all regular favourites from the Arts Trail event.

As you might expect, the range of media will be one of the most exciting things about this exhibition. Entries include: textiles, prints, paintings, photographs, jewellery, ceramics, woodwork, sculpture, stone carving and glass. Much of the work is new this year, all of it is original and all made right here on The Heads; you really don't get any more local than that!

Over the past 10 years support for the Arts Trail has been fantastic, so it was particularly sad for both artists and residents that this year the event had to be cancelled, but hopefully this will give everyone the chance to see the work of 31 artists in one place, and even better to find all your unique Christmas gifts in one hit. If you don't see exactly what you want in the exhibition

Whangarei Heads Arts Trail presents
CREATIVE HEADS
our
Christmas Exhibition at Reyburn House
Featuring the work of thirtyone Whangarei Heads Artists with a passion for creating exciting original work here in Whangarei

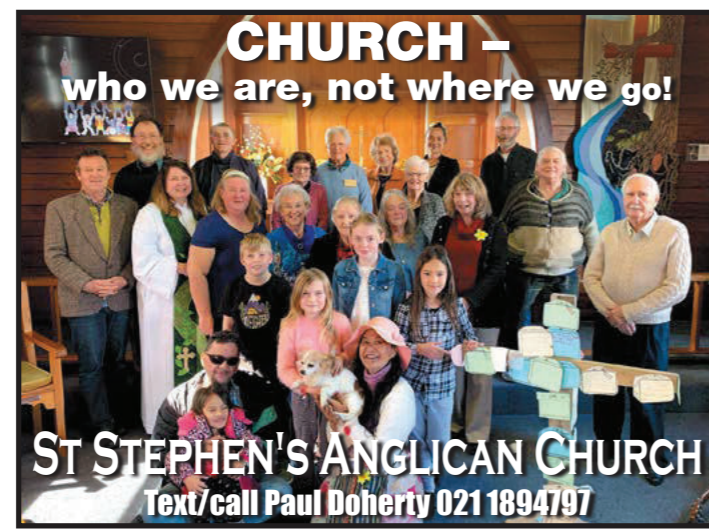
Jewellery
Sculpture
Painting
Drawing
Photography
Ceramics
Woodwork
Textiles
Prints
Stone Carving
Glass

Opening
Tuesday 3rd November to Sun 28th November
10am - 4 pm weekdays 10am - 2pm weekends
Closed Mondays
For more information on any of our Artists or to buy direct from our web site please visit
www.whangareiheadsartstrail.co.nz

please don't forget that many artists are now selling work directly from our website, so you can see a bigger range of what is available on our Browse and Buy pages.

CHURCH – who we are, not where we go!

ST STEPHEN'S ANGLICAN CHURCH
Text/call Paul Doherty 021 1894797

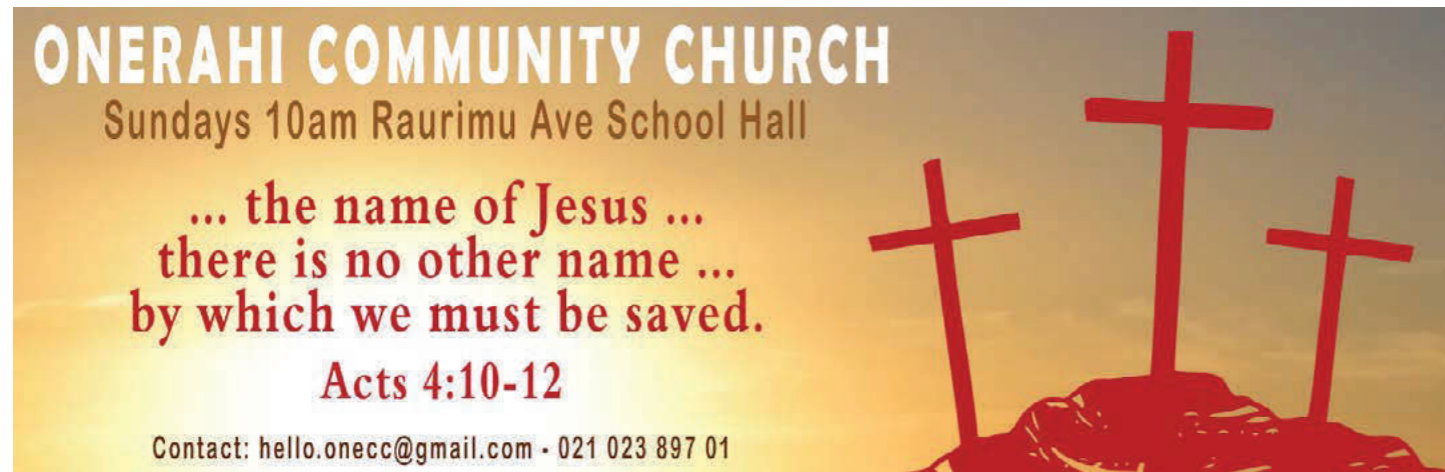


ONERAHI COMMUNITY CHURCH
Sundays 10am Raurimu Ave School Hall

... the name of Jesus ...
there is no other name ...
by which we must be saved.

Acts 4:10-12

Contact: hello.onecc@gmail.com • 021 023 897 01



More True Tales of Onerahi/He Kōrero Tonu Ana Ngā Pūrākau Ō Onerahirahi

Compiled by Agnes Hermans
Reviewed by Heather Bell

From Tales of Maoriland to Streets of Onerahi, this compilation of over one hundred stories carries on from where the first volume, True Tales of Onerahi, left off.

The latest book is a hefty, large format 283 page volume of reminiscences, local history, and photographs, which builds on the collection of stories in the previous volume.

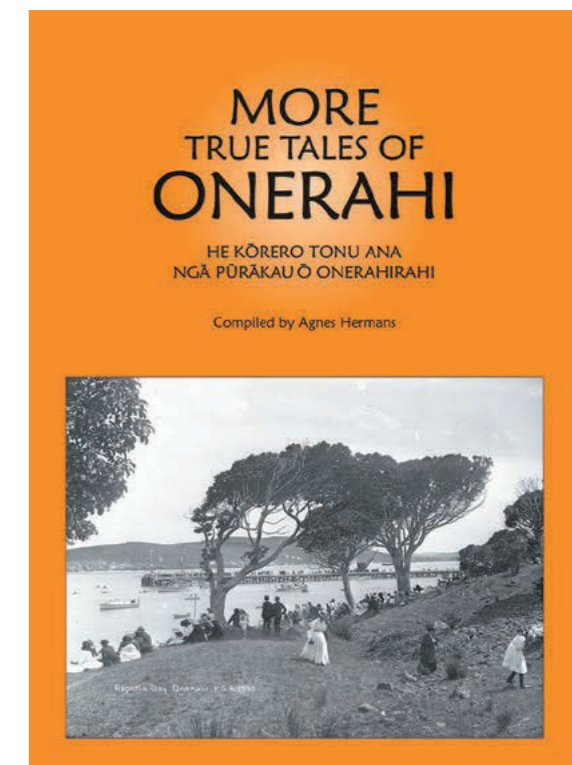
Agnes Hermans, who compiled both books, said that the first included articles by many older people who remembered the times they talked and wrote about. But, she said, there was just too much interesting and valuable material that did not get in, so another volume was needed.

This is not a chronological or definitive history of Onerahi; rather it is a collection of memories of, by, and about, some of the people who were making history in their daily lives, and the places they lived and worked. The book offers a rich, information-packed resource for anyone interested in

how the area developed and changed over the decades since European settlement, and about the characters and events that shaped Onerahi. Street maps from 1937 and 1963 on the back cover show some of the changes the area has undergone. There is also a section titled "Onerahi Timelines" which gives an overview of events.

It is interesting to go for a walk or drive around Onerahi after reading about Rotten Row, the airport's development, Onerahi Wharf and railway, and imagine how it was in the past.

More information on the Maori history of this land would have been welcome, but anyone wanting to know more about this area's post-European settlement past will find a trove of knowledge between these covers.



TopSail
contemporary new zealand dining

206 Beach Road
Onerahi, Whangārei
Reservations
09 436 2985
Open for dinner
Wed to Sat
from 6pm

An exquisite dining experience in warm comfortable surrounds on the water's edge of Whangārei Harbour
A well balanced menu with honest, unfussy, modern new zealand cuisine using french influences
A concise wine & beer list knowledgeably chosen to complement the food

www.topsail.co.nz



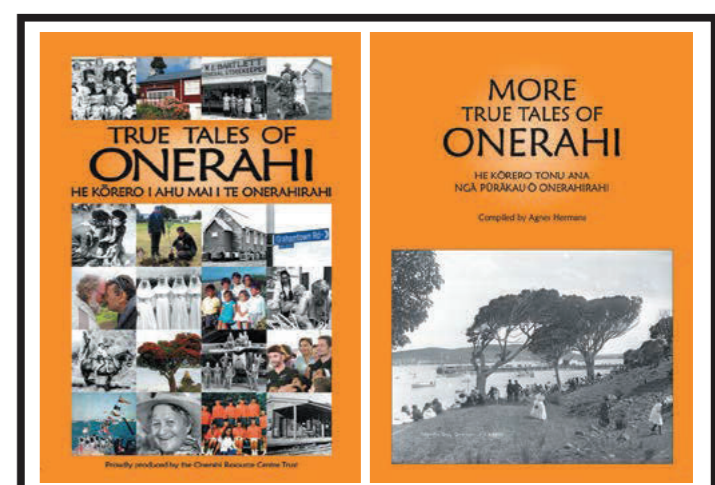
TU AERIAL SERVICES
www.tvas.co.nz
NORTHLAND AERIAL SPECIALIST

Two Years Guarantee • 25 Years Servicing Whangarei
SALES • SERVICE • INSTALLATION
Christian & Ethnic Satellite TV
Sound System • Domestic & Commercial
• Radio/FM
FOR EXPERT ADVICE PHONE:
MACK WILKINSON
Ph: (09) 436 0508
Mob: 021 992 974



TRUE TALES OF ONERAHI
HE KŌRERO I AHU MAI I TE ONERAHIRAHI

MORE TRUE TALES OF ONERAHI
HE KŌRERO TONU ANA
NGĀ PŪRĀKAU Ō ONERAHIRAHI
Compiled by Agnes Hermans



With over 200 short stories and 600 photos, TRUE TALES OF ONERAHI is a fascinating social history of our area.

**Stories told by locals, for locals.
Limited print run – now at a reduced price.**

Sold through Onerahi New World, Onerahi Bookshop, the Airport Café, Book-Inn Kamo and Trademe.

Technology News: Staying Safe on the Web

This is the season for cyberterrorism. Now, I'm not trying to scare you or make you concerned about what's happening in the world of IT; however this column will hopefully open your eyes to the bullying nature of cyberterrorists.

To me, cyberterrorism is nothing more than bullying at a grand scale. When you invade someone's life and take all their information, then say they can't have it back unless they pay money, that is simply bullying, or extortion.

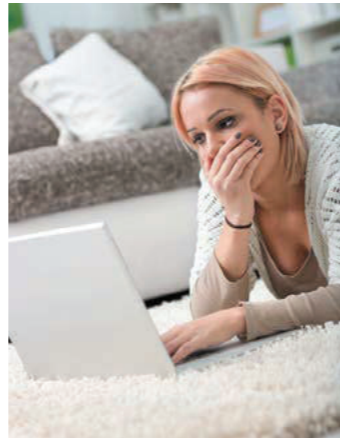
Most of us feel invaded when someone comes into our home uninvited, or steals something from our property. However your data or electronic information is possibly more devastating to you when someone takes it or uses it without your permission, or even blocks you from having access to it.

According to world experts in cyber-attacks, a computer is attacked in the US approximately every 39 seconds. Total global ransomware attacks in 2017 cost approximately \$US5 billion, which was 15 times more than 2015, and is predicted (by Cybersecurity Ventures) to be around \$US6 trillion by 2021.

So if you don't want to be one of those statistics, here are nine easy steps to protect yourself:

1. Backup - by backing up your data you are not stopping someone from attacking your computer, but you are protecting your data. As to how often you should backup, that depends on how important your data is.

2. Passwords - change your passwords regularly. Microsoft recommends once every 90 days. The standard for passwords has also changed over the years, with the requirements now being at least 10 characters long, with at least 2 capitals, 2 lower case, 2 numbers, 2 symbols, and no dictionary words.



3. Antivirus - it doesn't really matter which antivirus software you use, just make sure it is kept up to date so the chance of your computer being affected by ransomware or other viruses is reduced.

4. Popups - don't just click on random things that popup onto your screen. Many times we get lazy and just click on things that popup, and then they load software onto your computer which can cause problems. There are popup blockers that can be installed; however common sense is a good thing too.

5. Websites - this is a hard one to explain; however if you go on the internet and view porn sites and other questionable material, be prepared for attacks. Viruses are usually placed on websites that are viewed a lot, as this gives the virus writer the best hit rate, so be careful what you look at.

6. Updates - from time to time your computer needs to be updated. Complete these updates, they are typically fixing security holes that have been found within the operating system. By completing these updates you are protecting your computer from attacks.

7. Software - if you don't know who made the software and it is not a reputable company, don't install it. Most reputable companies will not purposely put harmful software on your computer; however sometimes it is better to ask first.

8. Emails - two very important things with emails: don't believe everything that you get in your emails; and, your bank does not typically send you emails. Be very cautious when opening emails. If you don't know who they are from, delete them.

9. Unsolicited phone calls - be very careful when someone rings and says that you have a problem with your computer, and they can help you fix it. Nine out of ten times all they are trying to do is access your data from your computer. Please hang up and do not let them access your PC.

Keep these nine simple little things in mind; have fun with your computer; and always remember, if you get stuck with your technology give your friendly IT person a call.

Vince Corcurullo



Vince Cocurullo
Northland's Fix-it man

IT • COMMUNITY PROJECTS • LOCAL ISSUES

Your Local Okara Ward Councillor

- COMPUTER FAILURE
- REMOTE ACCESS
- EMAIL TROUBLE
- NETWORKING

OR JUST SOME FRIENDLY ADVICE

P 09 4388 834
M 021 438 952
E vince@cocurullo.co.nz
W www.cocurullo.co.nz

fix it man

f t LinkedIn i



WHANGĀREI

Lat. 35° 46' S Long. 174° 21' E

OCTOBER 2020

N.Z. LOCAL TIMES AND HEIGHTS OF HIGH AND LOW WATERS

Day	Time	m	Day	Time	m	Day	Time	m	Day	Time	m
1 Th	0201	0.8	9 Fr	0106	2.7	17 Sa	0225	0.4	25 Su	0319	2.6
	0827	2.8		0715	0.9		0852	3.2		0916	0.9
	1420	0.8		1334	2.7		1447	0.4		1602	2.8
	2050	2.9		1942	1.1		2112	3.3		2200	1.0
2 Fr	0245	0.8	10 Sa	0151	2.6	18 Su	0316	0.3	26 Mo	0421	2.6
	0910	2.8		0801	0.9		0944	3.3		1018	1.0
	1503	0.8		1424	2.7		1538	0.4		1701	2.7
	2130	2.9		2035	1.1		2203	3.3		2259	1.0
3 Sa	0326	0.7	11 Su	0243	2.6	19 Mo	0406	0.2	27 Tu	0523	2.6
	0950	2.9		0854	1.0		1034	3.3		1119	1.0
	1542	0.8		1521	2.6		1629	0.4		1757	2.7
	2208	2.9		2135	1.1		2253	3.3		2354	0.9
4 Su	0405	0.7	12 Mo	0342	2.6	20 Tu	0455	0.3	28 We	0621	2.6
	1027	2.9		0955	1.0		1125	3.3		1217	1.0
	1620	0.8		1624	2.7		1720	0.4		1848	2.8
	2242	2.9		2238	1.0		2343	3.2			
5 Mo	0443	0.7	13 Tu	0449	2.6	21 We	0544	0.3	29 Th	0046	0.9
	1101	2.9		1058	0.9		1216	3.2		0713	2.7
	1658	0.8		1729	2.8		1812	0.6		1308	1.0
	2316	2.8		2339	0.9					1935	2.8
6 Tu	0519	0.7	14 We	0556	2.7	22 Th	0034	3.1	30 Fr	0133	0.8
	1136	2.8		1201	0.8		0633	0.5		0801	2.7
	1735	0.9		1831	2.9		1308	3.1		1354	0.9
	2350	2.8					1905	0.7		2018	2.8
7 We	0556	0.8	15 Th	0038	0.7	23 Fr	0126	2.9	31 Sa	0216	0.8
	1211	2.8		0700	2.9		0724	0.6		0843	2.8
	1814	0.9		1259	0.7		1404	3.0		1436	0.9
				1927	3.0		2001	0.8		2058	2.8
8 Th	0026	2.7	16 Fr	0133	0.6	24 Sa	0220	2.8			
	0635	0.8		0757	3.0		0818	0.8			
	1250	2.7		1354	0.5		1502	2.9			
	1856	1.0		2021	3.2		2059	0.9			

WHANGĀREI

Lat. 35° 46' S Long. 174° 21' E

NOVEMBER 2020

N.Z. LOCAL TIMES AND HEIGHTS OF HIGH AND LOW WATERS

Day	Time	m	Day	Time	m	Day	Time	m	Day	Time	m
1 Su	0256	0.7	9 Mo	0221	2.6	17 Tu	0343	0.3	25 We	0449	2.5
	0923	2.9		0827	0.9		1016	3.3		1045	1.1
	1515	0.9		1456	2.7		1610	0.5		1719	2.7
	2135	2.8		2110	1.0		2232	3.2		2320	1.0
2 Mo	0335	0.7	10 Tu	0319	2.6	18 We	0432	0.3	26 Th	0547	2.6
	1000	2.9		0926	0.9		1107	3.3		1142	1.1
	1554	0.9		1556	2.8		1702	0.5		1810	2.7
	2211	2.8		2211	0.9		2323	3.1			
3 Tu	0412	0.7	11 We	0424	2.7	19 Th	0521	0.4	27 Fr	0011	0.9
	1035	2.9		1030	0.9		1157	3.2		0641	2.6
	1632	0.9		1659	2.8		1753	0.6		1234	1.1
	2246	2.8		2312	0.8					1857	2.7
4 We	0449	0.7	12 Th	0532	2.7	20 Fr	0013	3.0	28 Sa	0059	0.9
	1111	2.9		1133	0.8		0610	0.5		0729	2.7
	1711	0.9		1800	2.9		1248	3.1		1322	1.0
	2322	2.8					1845	0.7		1942	2.7
5 Th	0527	0.7	13 Fr	0010	0.7	21 Sa	0104	2.9	29 Su	0143	0.8
	1148	2.9		0636	2.9		0700	0.7		0814	2.8
	1751	0.9		1234	0.7		1341	3.0		1405	1.0
				1859	3.0		1939	0.8		2023	2.7
6 Fr	0001	2.7	14 Sa	0107	0.5	22 Su	0156	2.7	30 Mo	0224	0.8
	0606	0.8		0736	3.0		0751	0.8		0855	2.8
	1228	2.8		1331	0.6		1435	2.9		1447	0.9
	1834	1.0		1955	3.1		2034	0.9		2103	2.8
7 Sa	0043	2.7	15 Su	0201	0.4	23 Mo	0251	2.6			
	0649	0.8		0831	3.2		0846	0.9			
	1312	2.8		1425	0.5		1530	2.8			
	1921	1.0		2048	3.2		2130	0.9			
8 Su	0129	2.7	16 Mo	0253	0.3	24 Tu	0350	2.6			
	0735	0.9		0924	3.3		0945	1.0			
	1401	2.8		1518	0.4		1625	2.7			
	2013	1.0		2141	3.2		2226	1.0			

Times shown in bold have been adjusted to New Zealand daylight saving time.
 Information courtesy of LINZ • www.linz.govt.nz



WHANGAREI MARINE SERVICES

**Authorised dealer for
Volvo Penta and Yanmar**




CONFIDENCE FROM RELIABILITY

09 438 3296 • 021 260 0792
 admin@marinetechs.co.nz
 93 Port Road, Whangārei

Local Photographer, Stacey Townsend

Whangarei Camera Club member Stacey Townsend sent us this hauntingly beautiful photo.

The Grahamtown (now Onerahi) Cemetery was first used in 1906, but was never popular due to the stony soil, making graves hard to dig by hand.

"I'm a member of the WCC and we have set subjects to help frame our creativity. Trees was one, so this shot I took early on a misty morning during Level 4 lockdown! It was lovely and peaceful and fitted the rules of not straying out of my neighbourhood! It's looking down the gorgeous pohutukawa arbour in the Onerahi Cemetery."

- Stacey Townsend



Is your brand up to date

- Does it truly reflect your business?
- Does your brochure tell the world who you are and what you're selling or servicing!
- Are you even visible on the internet?

This is where we can help you...

TOTAL IDEA CO™
GRAPHIC DESIGN STUDIO

For effective results
phone us on 09 438-1681
check us out at totalidea.co.nz
or email team@totalidea.co.nz

Simply Kids PRESCHOOL

45 Waverley Street, ONERAHI

09 436 2214



Home from home, with a mini-farm and big outside adventure area.

• Excellence • Quality • Education • Care



Call Lisa, your local agent
great experience and top results!

Curious about your property's value?
Give me a call!

021 646 768

Mike Pero | REAL ESTATE

Mike Pero Whangarei
09 438 6064 | https://whangarei.mikepero.com
4 Cameron Street, Whangarei

Citizens Advice Bureau

Te Pou Whakawhirinaki o Whangarei

WE'RE HERE
KEI KONEI MATOU

FOR FREE, CONFIDENTIAL
INFORMATION & ADVICE

CITIZENS ADVICE BUREAU WHANGAREI,
69 Bank Street, Whangarei

e: whangarei@cab.org.nz

Ph: 438 8046 or
0800 367 222 (freephone)

www.cab.org.nz



PEPE'S DAIRY

ONERAHI SHOPPING CENTRE

110a Onerahi Road, Whangarei

Service with a Smile!

Mon-Fri:
7am - 8pm

OPEN
7 DAYS

Sat-Sun & Public
Holidays: 8am-8pm

09 436 3600

Paws oñ cue

DOG GROOMING IN ONERAHI

- Grooming
- Washing
- 021 071 2885



laura.d.thomas@hotmail.com

When things don't go well!
We are here to care ... offering ...

- Accident and emergency care
- Health checks and vaccinations
- Trained veterinary nurses
- Open 7 days
- 24 hour emergency care



PET CENTRES
PH 470 1060

Whangarei – 16-18 Maunu Road
Hikurangi – Cnr George & Park Sts
Onerahi – 165 Onerahi Road



Like us on Facebook www.northvets.co.nz

COFFEE
is a Hug
in a Mug

COFFEE
& CAKE
on the
riverside



That's café with a 'K'
only in Whangarei

Riverside Drive Marina, Riverside Drive.

Gateway to the North



Whangarei Airport

- Helicopter: TwinCoast
- Secure Parking provided by 'Lock and Fly'
- Recreational Flight Training and Flying
- Aircraft Maintenance
- The Apron Café

Scheduled Air Services
Linking to the World

www.whangareiairport.co.nz

Obituary: Leonie Robertson

“Leonie was truly a wealth of knowledge in the Onerahi Community.

If something had happened around here, she knew who made it happen, when and why.

Leonie had a huge heart for the community and we greatly appreciated her assistance as the Secretary for the OCA.

She was able to organise most of the last few Santa parades with Rose and she always went above and beyond for those who she supported.”

Nicholas Connop, Chair, Onerahi Community Association & WDC Councillor

“It is sad to announce Leonie Robertson, who was our Secretary, has passed away.

Thank you for being a great Secretary for OCA. You were our rock and never missed anything that needed doing. We will miss your phone calls too, with all your knowledge.

At our meeting last night [OCA meeting 15 September] we sang a Waiata that Nick Connop led, then shared a minute’s silence.

RIP Leonie from the Committee of Onerahi Community Association. You will be missed.”

Rose Tantau, Treasurer, Onerahi Community Association

Onerahi Community Association Committee Secretary, died suddenly on 7 September, 2020



OCA Committee members Sue Glen, Julie Dennis, Nicholas Connop, Leonie Robertson, Rose Tantau, and (not a Committee member) Barbara Derrick.

Venues available for hire in Onerahi/Parua Bay Area

Onerahi Community Hall & Community House	Julie Dennis	09 43 64439 or 021-034 9943
Onerahi Bowling Club	Roger Kerr-Davis	027 390 7185
Onerahi Rugby Club	Phiona Raymond	onerahirugby@yahoo.com.
Onerahi Soccer Club	Fiona Ellis	onerahifootballclub@outlook.co.nz
Hope Church	Secretary	09 43 81 667
Raurimu School Hall	School Office	09 43 60 820 Ext. 2
St. Stephen's Church Hall	Paul Doherty	021 189 4797 or 09 43 60207
Tamaterau Hall	Dorothy Gallan	09 43 63 093 or 021 190089
Parua Bay Comm.Centre	Kirsty	bjandkirsty@slingshot.co.nz
Taurikura Hall	Meg Mclsaac	022 641 9786

Onerahi Volunteer Fire Brigade Round-up

This year to date we have just attended our 100th call.

Most notable of these was the 17 July flood event where we went to 27 different addresses over a seven hour period. We didn’t get home until two in the morning. Not just wet but hungry, as it all started about dinner time.

More recently: over the last couple of weeks we attended the 3rd alarm response to a fire in Raumanga. This job began about 10pm and didn’t end for us until about 1am.

Last Friday we did a small roadside fire in rush hour traffic. Then just after midnight on Saturday we had the

first of three calls that day. Starting at about 1am, a call out to Tamaterau to a car accident. Then at about 7am we were called to a fire at the fertiliser works on Port Road. Later in the afternoon another incident at Waikaraka where someone fell from a moving car.

This 22 strong group of dedicated volunteers is actually doing stuff, and at all hours, to help keep our community safe.

Fire Chief, Mike Chubb

Your Onerahi expert

PAUL THOMPSON

LICENSED SALESPERSON REAA 2008

Delivering **amazing** results!

027 651 2417
paul@uberrealestate.co.nz
9-11 Reyburn St, Whangarei 0110